



Machinery Bushings

Narrow Rim Assortment

Machinery Bushings are friction resistant alloy steel and are available in various sizes and thicknesses as noted. Narrow Rim available in 18, 14 and 10 gauge. Wide Rim available in 18 gauge only.



EDP#	Item Code	ID	OD	18 Gauge	14 Gauge	10 Gauge	#/Pkg.	Price
3247-21247	HUYETT 1/2" NR	1/2	7/8	25	-	-	25	\$ 5.33
3247-21447	HUYETT 9/16" NR	9/16	1	25	-	-	25	5.96
3247-21647	HUYETT 5/8" NR	5/8	1	15	10	-	25	6.90
3247-21847	HUYETT 3/4" NR	3/4	1-1/4	15	10	-	25	9.19
3247-22047	HUYETT 7/8" NR	7/8	1-3/8	15	10	-	25	7.66
3247-22247	HUYETT 1" NR	1	1-1/2	10	10	5	25	13.19
3247-22447	HUYETT 1-1/8" NR	1-1/8	1-3/4	10	10	5	25	12.39
3247-22647	HUYETT 1-1/4" NR	1-1/4	1-7/8	10	10	5	25	17.23
3247-22847	HUYETT 1-3/8" NR	1-3/8	2-1/8	10	10	5	25	19.93
3247-23047	HUYETT 1-1/2" NR	1-1/2	2-1/4	-	20	5	25	22.02
3247-23247	HUYETT 1-5/8" NR	1-5/8	2-3/8	-	20	5	25	18.97
3247-23447	HUYETT 1-3/4" NR	1-3/4	2-1/2	-	20	5	25	23.06
3247-23647	HUYETT 1-7/8" NR	1-7/8	2-7/8	-	20	5	25	35.00
3247-23847	HUYETT 2" NR	2	3	-	20	5	25	29.90
3247-24047	HUYETT 2-1/8" NR	2-1/8	3-1/8	-	8	2	10	19.13
3247-24247	HUYETT 2-1/4" NR	2-1/4	3-1/4	-	8	2	10	17.54
3247-24447	HUYETT 2-3/8" NR	2-3/8	3-3/8	-	8	2	10	16.38
3247-24647	HUYETT 2-1/2" NR	2-1/2	3-1/2	-	8	2	10	17.64

MRO Supplies

Wide Rim

EDP#	Item Code	ID	OD	#/Pkg.	Price
3247-24847	HUYETT 3/4" WR	3/4	1-1/2	25	\$11.64
3247-25047	HUYETT 7/8" WR	7/8	1-3/4	25	12.17
3247-25247	HUYETT 1" WR	1	2	25	12.38
3247-25447	HUYETT 1-1/8" WR	1-1/8	2-1/8	25	18.61
3247-25647	HUYETT 1-1/4" WR	1-1/4	2-1/4	25	19.73
3247-25847	HUYETT 1-3/8" WR	1-3/8	2-1/2	25	20.70
3247-26047	HUYETT 1-1/2" WR	1-1/2	3	25	26.37
3247-26247	HUYETT 1-5/8" WR	1-5/8	3-1/8	20	22.37
3247-26447	HUYETT 1-3/4" WR	1-3/4	3-1/4	20	27.28
3247-26647	HUYETT 1-7/8" WR	1-7/8	3-3/8	20	29.31
3247-26847	HUYETT 2" WR	2	3-1/2	20	33.51
3247-27047	HUYETT 2-1/8" WR	2-1/8	3-5/8	10	15.57
3247-27247	HUYETT 2-1/4" WR	2-1/4	3-3/4	10	15.94
3247-27447	HUYETT 2-1/2" WR	2-1/2	3-7/8	10	16.78



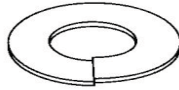
Bulk Narrow Rim

EDP#	Item Code	ID	OD	Ga.	Price
3247-27647	HUYETT 9/16" 18GA	9/16	1	18	\$.19
3247-27847	HUYETT 5/8" 18GA	5/8	1	18	.19
3247-28047	HUYETT 5/8" 14GA	5/8	1	14	.23
3247-28247	HUYETT 3/4" 18GA	3/4	1-1/4	18	.22
3247-28447	HUYETT 3/4" 14GA	3/4	1-1/4	14	.34
3247-28647	HUYETT 7/8" 18GA	7/8	1-3/8	18	.30
3247-28847	HUYETT 7/8" 14GA	7/8	1-3/8	14	.37
3247-29047	HUYETT 1" 18GA	1	1-1/2	18	.31
3247-29247	HUYETT 1" 14GA	1	1-1/2	14	.41
3247-29447	HUYETT 1" 10GA	1	1-1/2	10	.67
3247-29647	HUYETT 1-1/8" 18GA	1-1/8	1-3/4	18	.41
3247-29847	HUYETT 1-1/8" 14GA	1-1/8	1-3/4	14	.53
3247-30047	HUYETT 1-1/8" 10GA	1-1/8	1-3/4	10	1.13
3247-30247	HUYETT 1-1/4" 18GA	1-1/4	1-7/8	18	.48
3247-30447	HUYETT 1-1/4" 14GA	1-1/4	1-7/8	14	.63
3247-30647	HUYETT 1-1/4" 10GA	1-1/4	1-7/8	10	1.09
3247-30847	HUYETT 1-3/8" 18GA	1-3/8	2-1/8	18	.59
3247-31047	HUYETT 1-3/8" 14GA	1-3/8	2-1/8	14	.87
3247-31247	HUYETT 1-3/8" 10GA	1-3/8	2-1/8	10	1.50
3247-31447	HUYETT 1-1/2" 14GA	1-1/2	2-1/4	14	.89
3247-31647	HUYETT 1-1/2" 10GA	1-1/2	2-1/4	10	1.43
3247-31847	HUYETT 1-5/8" 14GA	1-5/8	2-3/8	14	.89
3247-32047	HUYETT 1-5/8" 10GA	1-5/8	2-3/8	10	1.64
3247-32247	HUYETT 1-3/4" 14GA	1-3/4	2-1/2	14	1.09
3247-32447	HUYETT 1-3/4" 10GA	1-3/4	2-1/2	10	1.74
3247-32647	HUYETT 1-7/8" 14GA	1-7/8	2-7/8	14	1.45
3247-32847	HUYETT 1-7/8" 10GA	1-7/8	2-7/8	10	2.57
3247-33047	HUYETT 2" 14GA	2	3	14	1.62
3247-33247	HUYETT 2" 10GA	2	3	10	2.75
3247-33447	HUYETT 2-1/8" 14GA	2-1/8	3-1/8	14	1.91
3247-33647	HUYETT 2-1/8" 10GA	2-1/8	3-1/8	10	3.03
3247-33847	HUYETT 2-1/4" 14GA	2-1/4	3-1/4	14	2.09
3247-34047	HUYETT 2-1/4" 10GA	2-1/4	3-1/4	10	3.68
3247-34247	HUYETT 2-3/8" 14GA	2-3/8	3-3/8	14	2.54
3247-34447	HUYETT 2-3/8" 10GA	2-3/8	3-3/8	10	3.85
3247-34647	HUYETT 2-1/2" 14GA	2-1/2	3-1/2	14	2.53
3247-34847	HUYETT 2-1/2" 10GA	2-1/2	3-1/2	10	4.42



Machinery Bushings

Quick Repair Split Washers



To apply, simply slip washer over shaft and tap overlatch in place.
All sizes 1/8" thick. Standard pkg - 10

EDP#	Item Code	ID	OD	Price
3247-35047	HUYETT 3/4"	3/4	1-3/4	\$3.51
3247-35247	HUYETT 7/8"	7/8	1-7/8	3.54
3247-35447	HUYETT 1"	1	2	3.58
3247-35647	HUYETT 1-1/8"	1-1/8	2-1/8	3.61
3247-35847	HUYETT 1-1/4"	1-1/4	2-1/4	3.68
3247-36047	HUYETT 1-3/8"	1-3/8	2-3/8	3.71
3247-36247	HUYETT 1-1/2"	1-1/2	2-1/2	3.73
3247-36447	HUYETT 1-3/4"	1-3/4	2-3/4	3.77
3247-36647	HUYETT 2"	2	3	3.80
3185-02185	HOPE 54131	3/4	1-3/4	3.72
3185-02485	HOPE 54136	7/8	1-7/8	3.78
3185-02285	HOPE 54141	1	2	3.84
3185-02585	HOPE 54146	1-1/8	2-1/8	3.90
3185-02385	HOPE 54151	1-1/4	2-1/4	3.97
3185-02685	HOPE 54156	1-3/8	2-3/8	4.02
3185-02785	HOPE 54161	1-1/2	2-1/2	4.09
3185-02885	HOPE 54166	1-3/4	2-3/4	4.14
3185-02985	HOPE 54171	2	3	4.21

Hourmeter

Honeywell/Hobbs Hourmeters - 82000 Series



- Indicates operating time in hours and tenths, plus has a running indicator
 - 10,000 hour version standard, with automatic recycle to zero
 - Temperature range: -40°F to +185°F, 40°C to 85°C
 - Operating voltage range: 5-110 VDC
(Voltage range covered by 85000 Series line)
 - Battery system voltages: 6, 12, 24, 36, 48, 60, 72, and 80 VDC
 - Polyester case and glass lens
- Excellent vibration and shock resistance

EDP#	Item Code	Description	Price
3119-59419	HOBBS 82450A-83	RECT ENGINE HOUR METER	\$33.26
3119-59519	HOBBS 82453-85	85014-02ROUND ENGINE HOUR METER	\$33.26

Hand Tach

Stewart Warner Hand-Held Tachometer



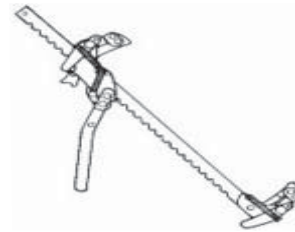
- Rotative speeds up to 4,000 RPM
- 2 color face dial
- 2 3/4" wide, 4" length
- Rubber tips included

EDP#	Item Code	Description	Price
5607-71107	STEW 82682	STEWART-WARNER HAND TACH	\$218.32
5607-72307	STEW 96798	RND TIP F/A.C. HND TACH	\$ 5.14
5607-72707	STEW 96799	FLAT TIP F/A.C. HND TACH	\$ 5.14

Farm Supplies

Fencing

Dutton Lainson Fence Stretcher-Splicer



- The GoldenRod Fence Stretcher-Splicer is built for easy operation
 - When splicing wire, the unit holds the ends in place so both hands are free to make splice
- Used to splice wire, stretch wire, to hold and staple wire, and to raise wire or draw wire down
- Now with new improved cast guides

EDP#	Item Code	Description	Wt.	Price
2171-45071	DL 56560	400 FENCE STRETCHER-SPLICER	8.25	\$62.13
2171-45371	DL 56576	405 HD FENCE STRETCHER-SPLICER	8.63	\$71.54

Sprayers

H.D. Hudson Bugwiser® Sprayers



All Bugwiser sprayers feature:

- Wide, deep funnel top for splash-free filling and easier cleaning.
- The Hudson® Roto-Valve™ is comfortable and easy to use.
- Squeeze to spray; release to instantly stop.
- Valve rotates 360° for easy up or down spraying.
- Long-reaching Braided Kem Oil power sprayer-type hose that can't kink.
- Bright, nickel-plated brass extension and nozzle for durability and outstanding appearance.

Polyethylene sprayers feature:

- Translucent tanks for easy sighting of liquid level.
- High performance poly pump with soft cushion grip.
- Pressurizes sprayer up to 15% faster; makes it easy to carry and handle sprayer.
- Has notch for locking-in spray wand when not in use.

EDP#	Item Code	Description	Actual Capacity Gallons	Wt.	Price
5634-71134	HUDSON 65222	HUDSON 2 GAL. POLY SPRAYER	2.5	4.50	\$53.54

MRO Supplies



Farm Supplies

Sprayers - Battery Powered



Hudson NeverPump Battery Operated Sprayers
- No More Pumping!

Hudson Sprayers is a leader in the personal and professional grade sprayers. The NeverPump sprayer is a battery operated unit that allows the operator greater spraying efficiencies and ease of use. 1 year warranty



Hudson 13854 4 Gallon *NeverPump* Bak-Pak Sprayer features:

- Up to 10 hours on a single charge
- Braided sprayer hose with 20" poly spray wand
- Lead acid battery with AC charger that charges in 9 hours.
- Extra large fill opening to prevent spills

EDP#	Item Code	Description	Price
5634-00100	HUDSON 13854	BAK-PAK 5-GALLON SPRAYER	\$174.48

Electrical Products

Whip Battery Protector



Whip is simple and easy to apply for prevention and stops corrosion of battery posts and cables. Use whip anywhere rust or corrosion is a problem.

Application: Brush on terminal over corrosion. Whip will dissolve corrosion and protect connection within 1 week.

EDP#	Item Code	Description	Approx. Batteries	Price
3036-00100	HEAMAR BT12CTWHIP	WHIP BATTERY PROTECTOR 2 FLUID OZ SKIN PACK	15	\$4.98
3036-00200	HEAMAR BT24CTWHIP	WHIP COUNTER DISPLAY BATTERY PROTECTOR	15	\$5.56
3036-00300	HEAMAR BTPINTWHIP	WHIP BATTERY PROTECTOR PINT BOTTLE	300	\$36.51

Heat Shrink Tubing



Heat shrinkable tubing Heavy wall with meltable liner. Made of polyolefin creates a seal which resists corrosion. Use to color code for polarity: red for positive, black for negative.

EDP#	Item Code	Description	Exp.	Shrunk	Price
5192-39792	QCC 5613-001B	3/4"X48" HT SHK BLK MAGNATUBE 4-2/0GA	3/4"	1/4"	\$27.48
5192-27792	QCC 5613BY	3/4" HT SHK BLK 6",6-2/0 GA	3/4"	1/4"	\$ 3.99
5192-39892	QCC 5614-001R	3/4"X48" HT SHK RED MAGNATUBE 4-2/0GA	3/4"	1/4"	\$27.48
5192-28092	QCC 5614RY	3/4" HT SHK RED 6",6-2/0 GA	3/4"	1/4"	\$ 4.18
5192-39992	QCC 5615-001B	1-1/8"X48" HT SHK BLK MAGNATUBE 1/0-250MCM	1-1/8"	3/8"	\$38.40
5192-28292	QCC 5615BY	1-1/8" HT SHK BLK 6" 4-4/0 GA	1-1/8"	3/8"	\$ 5.62
5192-40092	QCC 5616-001R	1-1/8"X48" HT SHK RED MAGNATUBE 1/0-250MCM	1-1/8"	3/8"	\$38.40
5192-40292	QCC 5616Y	1-1/8" HT SHK RED 6" 1/0-250 MCM MAGNATUBE	1-1/8"	3/8"	\$ 5.62

Electrical Products

Battery Cable



Quick Cable Battery Terminals are your Best Connection.

Battery cables and terminals designed for Heavy Duty Applications for truck, bus, farm and industrial. New cable gauge stamping, Polarity color coding, Polarity stamping, Crimp color code imprint. Consistent and reliable terminals.

Crimp Battery Terminals provide greater contact equaling greater conductivity and precision die casting delivers reliable crimps. All clamps, lugs, and fasteners are tin plated twice as thick as industry standards. All clamps and lugs are cast copper except for copper lugs. Contact your JDC location for the latest QCC Catalog and more information on the QCC product line.

EDP#	Item Code	Description	Price
5192-35292	QCC 200102-025	6GA BLK BATTERY CABLE 25'	Call
5192-35392	QCC 200103-025	4GA BLK BATTERY CABLE 25'	Call
5192-35492	QCC 200104-025	2GA BLK BATTERY CABLE 25'	Call
5192-35592	QCC 200105-025	1GA BLK BATTERY CABLE 25'	Call
5192-35692	QCC 200106-025	1/0 BLK BATTERY CABLE 25'	Call
5192-35792	QCC 200107-025	2/0 BLK BATTERY CABLE 25'	Call
5192-39592	QCC 200108-025	3/0 BLK BATTERY CABLE 25'	Call
5192-38092	QCC 200202-025	6GA RED BATTERY CABLE 25'	Call
5192-37992	QCC 200203-025	4GA RED BATTERY CABLE 25'	Call
5192-37892	QCC 200204-025	2GA RED BATTERY CABLE 25'	Call
5192-37792	QCC 200205-025	1GA RED BATTERY CABLE 25'	Call
5192-38192	QCC 200206-025	1/0 RED BATTERY CABLE 25'	Call
5192-38292	QCC 200207-025	2/0 RED BATTERY CABLE 25'	Call
5192-39692	QCC 200208-025	3/0 RED BATTERY CABLE 25'	Call

Crimp Connectors - Straight



EDP#	Item Code	Description	Price
5192-21492	QCC 4001N	1GA NEG ST CLAMP CRIMP	\$5.77
5192-21692	QCC 4001P	1GA POS ST CLAMP CRIMP	\$5.77
5192-21092	QCC 4002N	2GA NEG ST CLAMP CRIMP	\$5.77
5192-21292	QCC 4002P	2GA POS ST CLAMP CRIMP	\$5.77
5192-20692	QCC 4004N	4GA NEG ST CLAMP CRIMP	\$5.70
5192-20892	QCC 4004P	4GA POS ST CLAMP CRIMP	\$5.70
5192-20292	QCC 4006N	6GA NEG ST CLAMP CRIMP	\$5.70
5192-20492	QCC 4006P	6GA POS ST CLAMP CRIMP	\$5.70
5192-21892	QCC 4010N	1/0 NEG ST CLAMP CRIMP	\$5.86
5192-22092	QCC 4010P	1/0 POS ST CLAMP CRIMP	\$5.86
5192-22392	QCC 4020N	2/0 NEG ST CLAMP CRIMP	\$5.86
5192-22692	QCC 4020P	2/0 POS ST CLAMP CRIMP	\$5.86
5192-38992	QCC 4030N	3/0 NEG ST CLAMP CRIMP	\$6.10
5192-39092	QCC 4030P	3/0 POS ST CLAMP CRIMP	\$6.10



For Additional Product Information
Call Ag Sales at
800-767-2273 or visit
www.johnday.com



Electrical Products

Crimp Connectors - Elbow



EDP#	Item Code	Description	Price
5192-22892	QCC 4110N	1/0 NEG RT EL CRIMP	\$6.88
5192-23092	QCC 4110P	1/0 POS RT EL CRIMP	\$6.88
5192-23292	QCC 4120N	2/0 NEG RT EL CRIMP	\$6.89
5192-23492	QCC 4120P	2/0 POS RT EL CRIMP	\$6.89
5192-39192	QCC 4130N	3/0 NEG RT EL CRIMP	\$7.32
5192-39292	QCC 4130P	3/0 POS RT EL CRIMP	\$7.32
5192-23692	QCC 4210N	1/0 NEG LF EL CRIMP	\$6.88
5192-23892	QCC 4210P	1/0 POS LF EL CRIMP	\$6.88
5192-24092	QCC 4220N	2/0 NEG LF EL CRIMP	\$6.89
5192-24292	QCC 4220P	2/0 POS LF EL CRIMP	\$6.89
5192-24492	QCC 4310N	1/0 NEG FLAG CRIMP	\$7.62
5192-24692	QCC 4310P	1/0 POS FLAG CRIMP	\$7.62
5192-24892	QCC 4320N	2/0 NEG FLAG CRIMP	\$8.10
5192-25092	QCC 4320P	2/0 POS FLAG CRIMP	\$8.10
5192-39392	QCC 4330N	3/0 NEG FLAG CRIMP	\$8.10
5192-39492	QCC 4330P	3/0 POS FLAG CRIMP	\$8.10
5192-25292	QCC 4520F	2/0 3/8" STUD FLAG CRIMP	\$11.37
5192-25892	QCC 4801F	1GA 3/8" HD LUG CRIMP	\$4.18
5192-25692	QCC 4802F	2GA 3/8" HD LUG CRIMP	\$4.12
5192-25492	QCC 4804F	4GA 3/8" HD LUG CRIMP	\$4.08
5192-26092	QCC 4810F	1/0 3/8" AD LUG CRIMP	\$4.29
5192-26392	QCC 4820F	2/0 3/8" HD LUG CRIMP	\$4.44
5192-26592	QCC 4820H	2/0 1/2" HD LUG CRIMP	\$4.44
5192-40992	QCC 4830F	3/0 3/8" HD LUG CRIMP	\$4.54
5192-41092	QCC 4830H	3/0 1/2" HD LUG CRIMP	\$4.54
5192-26792	QCC 4910F	1/0 3/8" STUD S/T LUG	\$4.81
5192-26992	QCC 4910H	1/0 1/2" STUD S/T LUG	\$4.81
5192-27192	QCC 4920F	2/0 3/8" STUD S/T LUG CRIMP	\$4.86
5192-27492	QCC 4920H	2/0 1/2" STUD S/T LUG CRIMP	\$4.86

Solder Connectors - Fusion Straight



EDP#	Item Code	Description	Price
5192-46492	QCC 406301N	1&2 GA NEG SOLDER CLAMP FUSION	\$6.33
5192-46592	QCC 406301P	1&2 GA POS SOLDER CLAMP FUSION	\$6.33
5192-42292	QCC 406310N	1/0 NEG SOLDER ST CLAMP FUSION	\$6.60
5192-42492	QCC 406310P	1/0 POS SOLDER ST CLAMP FUSION	\$6.60
5192-42692	QCC 406320N	2/0 NEG SOLDER ST CLAMP FUSION	\$6.77
5192-42892	QCC 406320P	2/0 POS SOLDER ST CLAMP FUSION	\$6.77

Solder Connectors - Fusion Elbow

EDP#	Item Code	Description	Price
5192-43092	QCC 416310N	1/0 NEG SOLDER RT EL CLAMP FUSION	\$8.14
5192-43292	QCC 416310P	1/0 POS SOLDER RT EL CLAMP FUSION	\$8.14
5192-43492	QCC 416320N	2/0 NEG SOLDER RT EL CLAMP FUSION	\$7.78
5192-43692	QCC 416320P	2/0 POS SOLDER RT EL CLAMP FUSION	\$7.78
5192-43892	QCC 426310N	1/0 NEG SOLDER LF EL CLAMP FUSION	\$8.74
5192-44092	QCC 426310P	1/0 POS SOLDER LF EL CLAMP FUSION	\$8.74
5192-44292	QCC 426320N	2/0 NEG SOLDER LF EL CLAMP FUSION	\$7.78
5192-44492	QCC 426320P	2/0 POS SOLDER LF EL CLAMP FUSION	\$7.78
5192-46692	QCC 486301F	1&2 GA 3/8" HD SOLDER LUG FUSION	\$4.81
5192-45492	QCC 486310F	1/0 3/8 SOLDER LUG FUSION	\$5.03
5192-45692	QCC 486310H	1/0 1/2 SOLDER LUG FUSION	\$5.03
5192-45892	QCC 486320F	2/0 3/8 SOLDER LUG FUSION	\$5.34
5192-46092	QCC 486320H	2/0 1/2 SOLDER LUG FUSION	\$5.34
5192-44692	QCC 436310N	1/0 NEG SOLDER FLAG CLAMP FUSION	\$11.22
5192-44892	QCC 436310P	1/0 POS SOLDER FLAG CLAMP FUSION	\$11.22
5192-45092	QCC 436320N	2/0 NEG SOLDER FLAG CLAMP FUSION	\$10.59
5192-45292	QCC 436320P	2/0 POS SOLDER FLAG CLAMP FUSION	\$10.59

Compression Connectors - Straight



EDP#	Item Code	Description	Price
5192-32092	QCC 5006N	6GA NEG ST CLAMP COMPRESS	\$7.88
5192-32292	QCC 5006P	6GA POS ST CLAMP COMPRESS	\$7.88
5192-32492	QCC 5010N	1/0 NEG ST CLAMP COMPRESS	\$8.16
5192-32692	QCC 5010P	1/0 POS ST CLAMP COMPRESS	\$8.16
5192-32892	QCC 5020N	2/0 NEG ST CLAMP COMPRESS	\$8.84
5192-33092	QCC 5020P	2/0 POS ST CLAMP COMPRESS	\$8.84
5192-34492	QCC 5920F	2/0 3/8" STUD S/T LUG COMPR	\$7.52

Compression Connectors - Elbow



EDP#	Item Code	Description	Price
5192-33292	QCC 5120N	2/0 NEG RT EL COMPRESS	\$11.81
5192-33492	QCC 5120P	2/0 POS RT EL COMPRESS	\$11.79
5192-33692	QCC 5220N	2/0 NEG LF EL COMPRESS	\$11.81
5192-33892	QCC 5220P	2/0 POS LF EL COMPRESS	\$11.79

Compression Connectors - Flag



EDP#	Item Code	Description	Price
5192-34092	QCC 5320N	2/0 NEG FLAG COMPRESS	\$15.10
5192-34292	QCC 5320P	2/0 POS FLAG COMPRESS	\$15.10

Copper Connectors



EDP#	Item Code	Description	Price
5192-30492	QCC 5952F	4GA 3/8" COPPER LUG	\$1.41
5192-30692	QCC 5952H	4GA 1/2" COPPER LUG	\$1.41
5192-30892	QCC 5953F	2GA 3/8" COPPER LUG	\$1.59
5192-31092	QCC 5953H	2GA 1/2" COPPER LUG	\$1.59
5192-31292	QCC 5955F	1/0 3/8" COPPER LUG	\$1.81
5192-31492	QCC 5955H	1/0 1/2" COPPER LUG	\$1.89
5192-31692	QCC 5956F	2/0 3/8" COPPER LUG	\$2.23
5192-31892	QCC 5956H	2/0 1/2" COPPER LUG	\$2.23

Terminal Cover



EDP#	Item Code	Description	Price
5192-29292	QCC 5723B	1&2GA BLK TP STR CLAMP	\$3.44
5192-29492	QCC 5723R	1&2GA RED TP STR CLAMP	\$3.44
5192-29692	QCC 5724B	1/0&2/0 BLK TP STR CLAMP	\$3.44
5192-29892	QCC 5724R	1/0&2/0 RED TP STR CLAMP	\$3.44
5192-30092	QCC 5726B	1/0-3/0 BLK TP FLAG	\$4.54
5192-30292	QCC 5726R	1/0-3/0 RD TP FLAG	\$4.54

MRO Supplies



Electrical Products

Fastener Hardware



EDP#	Item Code	Description	Price
5192-34792	QCC 6014	BATTERY BOLT/NUT 5/16 x 1-3/8	\$0.54
5192-41192	QCC 6024	5/16"-18 ADAPTER NUT	\$3.60
5192-41492	QCC 6029	3/8"-16 ADAPTER NUT	\$3.90
5192-46392	QCC 6700T	5/16"-18X1-3/8"SQ BOLT,TIN	\$0.37
5192-42092	QCC 6701T	5/16" SHOULDER NUT, TIN	\$0.26

Accessories

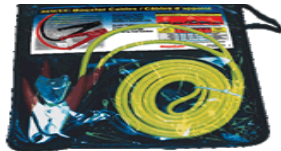
EDP#	Item Code	Description	Price
5192-35992	QCC 5566-010U	HD UNIV TOP POST TERM 2-4/0	\$34.01
5192-35892	QCC 5588-010U	UNIV TOP POST TERM 8GA-1GA	\$31.07
5192-36192	QCC 4294	BATTERY HOLDDOWN 5.75-8.5" (2 PIECES)	\$ 5.34
5192-36392	QCC 4296	BATTERY HOLDDOWN 8.25-13.25 (2 PIECES)	\$ 5.51
5192-36592	QCC 4297	BATTERY HOLDDOWN 5.25-7.5" OFFSET (2 PCS)	\$ 5.51
5192-34992	QCC 6023-001	QUICKCOTE+ 8 OZ CAN	\$20.46
5192-46292	QCC 5574-001	FUSION FLUX, 2 OZ	\$ 6.04
5192-41892	QCC 6622-100B	100 BLK PROTECTIVE WASHERS	\$15.88
5192-35192	QCC 6622-100R	CAN OF 100 PROTECTIVE WSHRS	\$22.68

Booster Pack



EDP#	Item Code	Description	Start Amps	Price
5192-01392	QCC 604049-001	ISTART 12V RESCUE BOOSTER PACK	200	\$ 67.69
5192-00892	QCC 604051-001	950 RESCUE BOOSTER PACK/ AIR COMPRESSOR	400	\$197.03
5192-00992	QCC 604052-001	1000 RESCUE BOOSTER PACK	500	\$197.78
5192-01092	QCC 604053-001	1800 RESCUE BOOSTER PACK	700	\$274.18
5192-01192	QCC 604054-001	2000 RESCUE BOOSTER PACK 124/246	400/900	\$244.23

Booster Cable



EDP#	Item Code	Description	Price
5192-00792	QCC 602345-001	25' 1GA 500 AMP BOOSTER CABLE	\$231.49
5192-46792	QCC 602280	20' 2GA 500AMP BOOSTER CABLE	\$150.33
5192-00692	QCC 602271-001	16' 26A 500 AMP BOOSTER CABLE	\$126.99
5192-00492	QCC 602200-001	16' 4GA 500AMP BOOSTER CABLE	\$ 85.20
5192-00592	QCC 602203-001	16' 4GA 400AMP BOOSTER CABLE	\$ 87.29

Terminal Kit

EDP#	Item Code	Description	Price
5192-00292	QCC 160902-001	PVC SOLDERLESS TERMINAL KIT (1675 PC)	\$255.57

Tools



EDP#	Item Code	Description	Price
5192-36692	QCC 4215-001	QUICKSTRIP STRIPPER	\$ 35.77
5192-00392	QCC-4217-001	STRIPPING TOOL	\$ 89.30
5192-36792	QCC 4255-001	LEVER TYPE CRIMP TOOL	\$404.18
5192-36892	QCC 4266-001	HAMMER TYPE CRIMP TOOL	\$ 53.90
5192-36992	QCC 4271-001	QUICKHEAT 1 GUN W/DEFLECTOR	\$ 88.59
5192-37092	QCC 4275-001	8GA - 3/0 HD CUTTER	\$ 42.27
5192-37192	QCC 4285-001	QUICKCUTTER 2, 24" LONG	\$135.19

Crimp Kits - Quick Cable



Anderson Connector



QCC 9998-250

EDP#	Item Code	Description	Price
5192-46892	QCC 124104-001	4GA CRIMP KIT 175 AMP GRAY ANDERSON PWR CNNCTRS	\$ 14.81
5192-46992	QCC 124105-001	2GA CRIMP KIT 175 AMP GRAY ANDERSON PWR CNNCTRS	\$ 14.81
5192-47092	QCC 124107-001	1/0 CRIMP KIT 175 AMP GRAY ANDERSON PWR CNNCTRS	\$ 14.81
5192-47192	QCC 124108-001	2/0 CRIMP KIT 350 AMP GRAY ANDERSON PWR CNNCTRS	\$ 23.43
5192-37292	QCC 9921-001	FIELD REPAIR KIT	\$ 709.90
5192-37592	QCC 9998-250	2/0 COMPLETE STARTER PACK 25' ROLL	\$ 883.99
5192-37392	QCC 9999-250	4,1,2/0 COMPLETE STARTER PK 25' ROLLS	\$1002.18
5192-01292	QCC 9930-001	4 & 1 GA MAGNA LUG KIT	\$ 234.18

Floor Mat



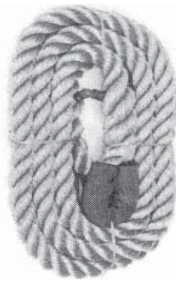
EDP#	Item Code	Description	Price
6725-00200	WEAWEL #220	36" x 60" HD. BLK-> MAT	\$110.00
6725-00150	WEAWEL 415 3'X5'	9/16" BLK W/YELLW BORDERS DIA-PLATE SPONGECOTE	\$152.44
6725.00400	WEAWEL 461 30"X36"	BLACK W/YELLOW BORDER .78	\$136.61
6725-00500	WEAWEL 518 17"X30"	COMFORT2GO PORTABLE ANTI-	\$ 70.68

MRO Supplies



Tow Rope

Custom Rope Tow Rope - Cars/Pickups



Custom Rope is safer than nylon, cable or chain! Custom rope manufactures the best tow rope on the market today. Designed for the purpose of pulling, Custom Rope is resistant to weather, oil, battery acid, diesel fuel, gasoline, hydraulic fluid, fertilizer and UV rays.

R (#,000 load rating) – (0-Loops, 1-1 hook, 2-2 hooks, R-Rings) – (length)

Custom rope only stretches 10-14% of its length. If rope does break, it will not recoil like nylon. Tow ropes are designed for specific applications and available with loops, 1 hook, 2 hooks or rings. Customer lengths are available. (Please specify)

EDP#	Item Code	Description	Price
3036-01300	HEAMAR R12.5-0-20'	TOW ROPE 12,500#, 20' LOOPS	\$43.42
3036-01400	HEAMAR R12.5-1H-20'	TOW ROPE 12,500#, 20' 1HOOK	\$55.44
3036-01500	HEAMAR R12.5-2H-20'	TOW ROPE 12,500#, 20' 2 HOOK	\$67.42

WORM DRIVE HOSE CLAMPS

With Screwdriver Slot

ITEM CODE: TRIDON

Recommended for all ordinary uses.

325 Series: 1018 Carbon Steel Screw, 301 Stainless Band and Housing.

600 Series: 1018 Carbon Steel Screw, 301 Stainless Band, Carbon Steel Housing.

Standard Package - 10



EDP No.	Item	Band Width	Dia. Range In.		Price Per 100
			Min.	Max.	
6321-30221	325-004*	5/16	7/32	5/8	92.75
6321-30421	325-006*	5/16	5/16	7/8	92.75
6321-30621	325-012	5/16	9/16	1-1/4	97.93
6321-30821	325-016	5/16	11/16	1-1/2	97.93
6321-31021	600-006	1/2	3/8	7/8	94.91
6321-31221	600-008	1/2	7/16	1	94.91
6321-31421	600-010	1/2	9/16	1-1/16	94.91
6321-31621	600-012	1/2	9/16	1-1/4	96.20
6321-31821	600-016	1/2	11/16	1-1/2	96.20
6321-32021	600-020	1/2	3/4	1-3/4	97.07
6321-32221	600-024	1/2	1-1/16	2	97.07
6321-32421	600-028	1/2	1-5/16	2-1/4	97.50
6321-32621	600-032	1/2	1-9/16	2-1/2	97.50
6321-32821	600-036	1/2	1-13/16	2-3/4	99.65
6321-33021	600-040	1/2	2-1/16	3	99.65
6321-33221	600-044	1/2	2-5/16	3-1/4	128.13
6321-33421	600-048	1/2	2-9/16	3-1/2	128.13
6321-33621	600-052	1/2	2-13/16	3-3/4	141.07
6321-33821	600-056	1/2	3-1/16	4	141.07
6321-34021	600-060	1/2	3-5/16	4-1/4	144.95
6321-34221	600-064	1/2	3-9/16	4-1/2	144.95
6321-34421	600-072	1/2	4-1/16	5	154.87
6321-34621	600-080	1/2	4-5/8	5-1/2	161.34
6321-34821	600-088	1/2	4-3/32	6	175.58
6321-35021	600-096	1/2	4-1/2	6-1/2	190.68
6321-35221	600-104	1/2	5	7	191.11

* Ideally suited as fuel line clamp.

Tow Rope

Custom Rope Tow Rope - 4 Wheel Drive Pickups

EDP#	Item Code	Description	Price
3036-02200	HEAMAR R25-0-20'	TOW ROPE 25,000#, 20' LOOPS	\$64.44
3036-02300	HEAMAR R25-1H-20'	TOW ROPE 25,000#, 20' 1 HOOK	\$80.92
3036-02400	HEAMAR R25-2H-20'	TOW ROPE 25,000#, 20' 2 HOOK	\$97.43

Custom Rope Tow Rope - Small Tractors

EDP#	Item Code	Description	Price
3036-02500	HEAMAR R37.5-0-30'	TOW ROPE 37,500#, 30' LOOPS	\$118.43
3036-02600	HEAMAR R37.5-1H-30'	TOW ROPE 37,500#, 30' 1 HOOK	\$160.44
3036-02700	HEAMAR R37.5-2H-30'	TOW ROPE 37,500#, 30' 2 HOOK	\$214.44

Custom Rope Tow Rope - Large Tractors

EDP#	Item Code	Description	Price
3036-02800	HEAMAR R50-0-30'	TOW ROPE 50,000#, 30' LOOPS	\$151.44
3036-02900	HEAMAR R50-1H-30'	TOW ROPE 50,000#, 30' 1 HOOK	\$199.50
3036-03000	HEAMAR R50-1R-30'	TOW ROPE 50,000#, 30' 1 RING	\$182.94
3036-03100	HEAMAR R50-2R-30'	TOW ROPE 50,000#, 30' 2 RING	\$214.44

Custom Rope Tow Rope - Large 4 WD Tractors

EDP#	Item Code	Description	Price
3036-03500	HEAMAR R75-0-30'	TOW ROPE 75,000#, 30' LOOPS	\$214.44
--	HEAMAR R75-1H-30'	TOW ROPE 75,000#, 30' 1 HOOK	\$271.44
3036-03700	HEAMAR R75-2R-30'	TOW ROPE 75,000#, 30' 2 RING	\$328.43

Custom Rope Tow Rope - Heavy Equipment,

EDP#	Item Code	Description	Price
3036-03800	HEAMAR R87.5-0-30'	TOW ROPE 87,500#, 30' LOOPS	\$247.43

Custom Rope Tow Rope - Combines

EDP#	Item Code	Description	Price
3036-00700	HEAMAR R100-0-30'	TOW ROPE 100,000#,30' LOOPS	\$277.43
3036-00800	HEAMAR R100-0-40'	TOW ROPE 100,000#,40' LOOPS	\$370.46
3036-00900	HEAMAR R100-1R-30'	TOW ROPE 100,000#,30' 1 RING	\$367.43
3036-01000	HEAMAR R100-1R-40'	TOW ROPE 100,000#,40' 1 RING	\$460.46
3036-01100	HEAMAR R100-2R-30'	TOW ROPE 100,000#,30' 2 RING	Call
3036-01200	HEAMAR R100-2R-40'	TOW ROPE 100,000#,40' 2 RING	\$550.46

Custom Rope Tow Rope - Heavy Duty Use

EDP#	Item Code	Description	Price
3036-01600	HEAMAR R125-0-30'	TOW ROPE 125,000#, 30' LOOP	\$377.96
3036-01700	HEAMAR R125-0-40'	TOW ROPE 125,000#,40' LOOPS	\$502.43
3036-01800	HEAMAR R125-1R-30'	TOW ROPE 125,000#,30' 1 RING	\$467.96
3036-01900	HEAMAR R125-1R-40'	TOW ROPE 125,000#,40' 1 RING	\$592.49
3036-02000	HEAMAR R125-2R-30'	TOW ROPE 125,000#,30' 2 RING	\$551.96
3036-02100	HEAMAR R125-2R-40'	TOW ROPE 125,000#,40' 2 RING	\$682.44

Check out our selection of
Screw Pin Anchor Shackles.

For more information on these products and other products you are looking for, call *Ag Sales* at the **John Day Company** at **800-767-2273.**



Farm Supplies

Heaters

Forced Air Farm Heaters - HEATSTAR



HS75K



HS125KT



HS175KT



HS50K



HS210KT

EDP#	HeatStar No.	Master No.	BTU's	Price
3039-00600	HS50K	B55	50,000	\$290.64
3039-00700	HS75K	B70	75,000	323.39
3039-00100	HS125KT	B115	125,000	483.04
3039-00200	HS175KT	B165	175,000	519.89
3039-00400	HS210KT	B200	210,000	654.98

Automatic ignition - just plug in to start, complete combustion of fuel eliminates all fumes. Stainless steel combustion chamber for years of trouble-free service. Heavy duty continuous ignition transformer assures instantaneous ignition even in coldest, sub-zero weather. Spark plug ignition and low pressure atomizing burner. Extra large wheels and flared handles for ease of transport. Attractively painted with heat-resistant paint. New flat type tank and low center of gravity makes the unit virtually "tip-proof." All units have built-in thermostat. Automatic cadmium cell safety control featured in all models. Automatically shuts off the heater in case of combustion malfunction.

OPTIONAL THERMOSTAT KIT. Provides maximum fuel efficiency - allows more hours of heat per tank. Quickly pays for its low cost. No installation required, just hang the thermostat approximately 5 feet from floor level and away from line of heat. Plug 10 ft. cord into thermostat. Dial temperature desired.

HEATSTAR Auxillary Propane Heaters



MH9



MH18B



MH500PT



HS35LP



MH12T



MH24T



HS2000ID



HST45NG

EDP#	HeatStar No.	Description	BTU's	Source	Price
3039-01300	HEATSTAR MH9	BUDDY PROPANE HEATER	4,000/9,000	1 LB. CYL.	\$126.67
3039-01000	HEATSTAR MH18B	BIG BUDDY PROPANE HEATER	4,000/9,000	1 LB. CYL.	188.50
3039-01200	HEATSTAR MH500PT	HAND HELD PROPANE TORCH (10' HOSE INCLUDED)	500,000	PROPANE TANK	58.34
3039-00500	HEATSTAR HS35LP	PORTABLE RADIANT HEATER (20' HOSE INCLUDED)	35,000	20-LB. TANK	201.76
3039-00900	HEATSTAR MH12T	PATIO HEATER - SINGLE ELEMENT	8,000/12,000/16,000	20-LB. TANK	55.87
3039-01100	HEATSTAR MH24T	PATIO HEATER - DUAL ELEMENT	8,12,16,24,28,000	20-LB. TANK	118.39
3039-00300	HEATSTAR HS2000ID	INDIRECT FIRED FORCED AIR	205,000	LARGE TANK	3020.20
3039-01300	HEATSTAR HST45NG	LOW INTENSITY INFRARED RADIANT 10' LONG, HORIZONTAL/VERTICAL MOUNT, 120VAC	45,000	NATURAL GAS	1145.23

MRO Supplies



Farm Supplies

Heater Service Parts

EDP#	Item No.	Description	Price	EDP#	Item No.	Description	Price
4941-12000	*HA-2210	Screen	\$13.31	--	M-20553	Sub, M-17058	--
4941-00700	*HA-3003	Safety Control Kit	100.00	--	M20711-1	Sub, 097305-04	--
4941-00800	*HA-3004	Rotor Kit (1/2")	24.64	4941-14100	M-22009	Insert	1.02
4941-00900	*HA-3005	Rotor Kit (5/8")	25.18	--	M-23103	Sub, 100735-2	--
4941-01000	*HA-3007	Nozzle	26.00	--	M-23105	Sub, M-27694	--
4941-01100	*HA-3009	Nozzle Kit	27.33	--	M-23107-1	Sub, M-31316	--
4941-01200	*HA-3011	Nozzle Kit	30.00	--	M-24982-5	Sub, M50671-03	--
4941-01300	*HA-3012	Spark Plug	21.71	--	M-25022-1	Sub, 102001-14	--
4941-01400	*HA-3013	Spark Plug	6.67	--	M-25061-1	Sub, 098165-01	--
4941-01500	*HA-3014	Air Filter Kit	7.11	4941-14400	M-25296-1	Control Brkt. Assy.	7.27
4941-01600	*HA-3017	Filter Kit	12.04	4941-14500	M-26316	Nozzle	23.16
4941-01700	*HA-3018	Filter Kit	16.56	4941-14600	M-27694	Adj. Screw	1.20
4941-01800	*HA-3019	Photocell	6.33	4941-14700	M-28526	Nut Cap	1.60
--	M-3259-4	Sub, M27827-3	--	--	M-28898-1	Sub, M50671-03	--
--	M-3301-1	Sub, M-50398	--	--	M-28898-02	Sub, M50671-03	--
4941-16300	M-8643	Pump Blades	\$13.33	--	M-28898-03	Sub, M50671-03	--
--	M-8645	Sub, 079975-02	--	4941-14800	M-29609	End Cover	7.08
--	M-8645-3	Sub, 079975-04	--	4941-14900	M-29612-01	Air Filter Assy.	4.20
4941-16500	M-8882	Sleeve	1.82	4941-15000	M-29632	Lint Filter	1.02
4941-16600	M-8940	Ball	.67	4941-15100	M-29633	Air Intake Filter	1.49
4941-12200	M-10809-1	Spring	1.71	--	M-29805	Sub, 097213-01	--
--	M-10962-02	Sub, HA-3012	--	--	M-29814-01	Sub, M50878-01	--
4941-06400	M-10990-3	Bushing	1.60	--	M-29835	Sub, HA-3013	--
4941-12300	M-10993-1	Spring	1.02	--	M-29835-02	Sub, HA-3013	--
--	M-11084-25	Sub, M11084-26	--	4941-00500	M-50323	Filter Screen	4.19
4941-12400	M-11084-26	Screw	1.02	2117-44717	M-50387-01	Airline Kit	26.58
4941-12500	M-11084-27	Screw	.96	4941-15200	M-50387-02	Airline Kit	36.31
4941-12700	M-11271-8	Tinnerman Nut	1.22	--	M50450-01	Sub, 097308-04	--
4941-12800	M-11637	Filter	1.02	--	M-50398	Sub, M51102-01	--
2117-27917	#M-11954	Bushing	.76	4941-15300	M-50545	Port Plate	38.82
4941-12900	M-12179	Filter Element	2.09	--	M-50570-03	Sub, 102482-01	--
--	M-12233	Sub, M50545	--	--	M-50570-04	Sub, 102482-01	--
4941-13000	M-12244-1	Filter Element	6.58	--	M-50597	Sub, HA-3007	--
4941-13100	M-12461-31	Screw	.96	--	M-50671-02	Sub, 097528-01	--
--	M-12462-32	Sub, M12461-31	--	--	M-50671-03	Sub, HA-3003	--
4941-13200	M-12461-34	Screw	1.02	4941-15400	M-50814-03	Air Tubing, 19.25"	8.09
4941-13300	M-12462-6	Relay	23.09	4941-15500	M-50820-02	Barb Fitting	3.44
4941-13400	M12462-9	Relay	22.31	--	M-50843-02	Sub, 097073-02	--
--	M-12462-17	Sub 107850-01	--	3039-04700	HEATST 28780	Fuel Filter	10.67
--	M-13960	Sub, M-26316	--	3039-02700	HEATST 20234	Inlet Filter	1.57
4941-13500	#M-14293	Nozzle	35.73	3039-02800	HEATST 21794	High Limit Control	5.59
--	M-14360	Sub, 100508-1	--	3039-02900	HEATST 22109	Fuel Aspir. Nozzle	40.97
4941-13600	M-16545	End Cover	7.47	3039-03000	HEATST 22142	Ignitor Assy.	75.57
4941-13800	M-16660	Photo Cell Brkt.	2.00	3039-03100	HEATST 22144	Electrode Assy.	5.64
--	M-16697	Sub, 102482-01	--	3039-03200	HEATST 22221	Flame Control Assy.	63.89
--	M-16697-02	Sub, 10282-01	--	3039-03300	HEATST 23270	Outlet Filter	1.57
4941-13900	M-16741-18	Retaining Ring	1.88	3039-03400	HEATST 26265	Adjusting Screw	1.57
--	M-16781-2	Sub, 098512-10	--	3039-03500	HEATST 06850	Ball Pressure Adj.	1.57
--	M-16781-4	Sub, 098512-10	--	3039-03600	HEATST 26851	Spring Pressure Adj.	1.57
--	M-16789-3	Sub, 079725-04	--	3039-03700	HEATST 26901	High Limit Control	5.49
--	M-16887-6	Sub, 098512-02	--	3039-03800	HEATST 26902	High Limit Control	3.89
--	M-16895-1	Sub, HA-3012	--	3039-03900	HEATST 26904	Pump Adj Screw Cap	1.57
--	M-17814-5	Sub, 097305-04	--	3039-04000	HEATST 26909	Fuel Cap	2.83
--	M-17941-1	Sub, M-31316	--	3039-04100	HEATST 26910	Fuel Cap Gasket	1.57
--	M-18022	Sub, HA-3011	--	3039-04200	HEATST 27416	Fuel Aspir. Nozzle	45.21
--	M-18051	Sub, M-23284	--	3039-04300	HEATST 28741	Fuel Aspir. Nozzle	40.97
--	M-18053	Sub, HA-2210	--	3039-04400	HEATST 28742	Fuel Aspir. Nozzle	40.97
--	M-19294	Sub, 097896-01	--	3039-04500	HEATST 28743	Fuel Aspir. Nozzle	40.97
--	M-19295	Sub, 097896-01	--	3039-04600	HEATST 28779	Fuel Filter	2.88
4941-14000	M-19630	Filter	11.94	3039-04800	HEATST F273699	Fuel Filter	10.72
				3039-04900	HEATST F273701	5' Heater Hose	25.92
				3039-05000	HEATST F273702	12' Heater Hose	35.87

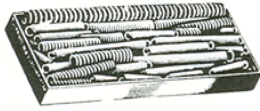
MRO Supplies

* Available from Stock on Hand Only.
*Indicates Bubble Pack Items.



Springs

Gardner No. 1 Industrial Spring Assortment



90 zinc plated extension and compression springs for the production line and maintenance department. A low cost safety factor against breakdown. A favorite mill supply stock item.

EDP No.	Description	Net Price
2765-00100	GARD 1 - IND SPRING ASST	\$72.19

Ventilation Equipment

TPI Industrial Floor Fan

- Fan head tilts 360° for pinpoint air delivery.
- Rugged and long wearing all metal construction.
- Motor is dependable 3-speed, 1 phase, 115V ball bearing totally enclosed permanently lubricated.
- Rotary switch.
- Aluminum blade has a steel hub.
- Safety guards are double locking.
- Cord is SJT type 3 conductor, 10'L. Rolls on 5 inch hard rubber wheels.
- Meets OSHA standards.
- UL listed.
- 1 Yr limited warranty



EDP#	Item Code	Description	CFM High	Amps (High)	Wt.	Net Price
--	TPI F-12-TE	12" FLOOR FAN	2750	1.1		Call
6285-01500	TPI F-18-TE	18" FLOOR FAN	5750	2.2	20	\$84.92
6285-01600	TPI F-18H-TE	18" FAN WITH HIGH STAND	5750	2.2	27	\$112.87

TPI Standard Industrial Air Circulator - 30 and 24 Inch

- Meets OSHA standards, UL listed
- 1 year limited warranty.
- Adjustable column (4-1/2' to 7') bolts to 27" diameter steel dome base with 5 carriage bolts.
- Motor: 2-speed, 1/4 HP, 1 PH, 115V ball bearing, totally enclosed permanently lubricated permanent split capacitor.
- Switch: Pull chain.
- Cord: SJT type 3 conductor, 12' long.
- Blade: Steel hub/spider aluminum paddles.
- UPS-able Single Pack.



EDP#	Item Code	Description	Wt.	Net Price
6285-01000	TPI ACU 24-P	24" STD PEDESTAL FAN	75	\$208.75
6285-01200	TPI ACU 30-P	30" STD PEDESTAL FAN	78	\$214.23
6285-01100	TPI ACU 24-W	24" STD WALL MOUNT FAN	45	\$113.68

Electrical Products

Lighting

Coleman Cable Trouble Light with Outlet

- Deluxe trouble light with grounded outlet on handle.
- Bulb cage is white colored plastic with swivel hook.
- Grounded outlet on handle.
- Orange cord.



EDP#	Item Code	Description	GA/Cond.	125V Rating	Wt.	Price
4683-09200	COLEMAN 05427-88-03	25' 16/3 TROUBLE LIGHT	16/3	13A	2.50	\$27.38
4683-10100	COLEMAN 05428-88-03	50' 16/3 TROUBLE LIGHT	16/3	13A	4.50	\$42.04
4683-28500	COLEMAN 172-05931	25' FLOOR TROUBLE LIGHT	18/2	7A	2.6	\$37.15

Coleman Cable Luma-Site® Retractable Cord Reel Worklight

- Cool, glare-free light that is energy efficient.
- Uses 13 watt twin tube compact fluorescent bulb with shatter-resistant clear plastic sleeve, 360° rotation hanging hook.
- On/Off switch on handle, three conductor plug-in ballast.



EDP#	Item Code	Description	GA/Cond.	125V Rating	Price
4683-11100	COLEMAN 05570-88-08	30' RETR TROUBLE LIGHT	16/3	10A	\$89.50

Pump - Trash or Transfer

2" Semi-Trash Pump with 6.5hp Kohler Engine

SpeeCo's 2" Semi-Trash Pump is equipped with a powerful 6.5 H.P. Kohler engine to deliver maximum 167 gallons per minute. (Strainer included, Clamps not included)

- Engine: 6.5 H.P. Kohler Engine
- Inlet and Outlet Connections: 2" NPT
- Handles Solids: Up to 1/2"
- Durable Ductile Iron Impeller and Diffuser
- Delivery Volume: 167 GPM
- Suction Head: 30 Ft.
- Lift Head: 110 Ft.
- Speed: 3600 RPM
- Shipping Weight: 79 lbs.



EDP#	Item Code	Description	List Price
5812-10312	SPEECO S44010100	2" Trash Pump with 6.5hp Kohler Engine	\$435.71

Hose & Poly Cam Lock Couplings: (Available)

MRO Supplies



Flashlights

Flashlights - Magnetic Pickup

Mayhew CATSPAW line of Magnetic Pickup LED Flashlights illuminate the work area and are a handy addition to any tool chest.

- 45044 Telescoping 3 LED Lighted Pickup Tool
- Extends from 7-1/2" to 22-3/8"
 - Magnetic end with 5 lbs of pulling power
- 45045 Lighted LED Pen Pickup Tool
- Extends from 6-3/4" to 20-1/2"
 - Magnetic end with over 2 lbs of pulling power



EDP#	Item Code	Description	Price
4074-00374	MAY 45044	FLASHLIGHT/MAGNET PICK UP	\$28.50
4074-00474	MAY 45045	LIGHTED PEN PICK UP TOOL	\$21.64

Custer Products LED

LED lighting is the standard today. FL16 features 21 LED, push button on rear of flashlight and Flat Face head. 3 "AAA" batteries not included



EDP#	Item Code	Description	Price
6167-02167	CUSTER FL16	21LED FLASHLIGHT FLAT FACE	\$12.33

Streamlight 3C LED



Streamlight® offers a complete line of high performance flashlights. Streamlight® Flashlights Features: Unbreakable casing. Corrosion proof & shock resistant.

All units are backed by Streamlights' Lifetime Warranty. Streamlight® is recognized around the world as the leading provider of premium lighting solutions.® Heroes Trust Streamlight™

Waterproof, non-conductive polymer flashlight with clip. Features 10 white LEDs. Tailcap "on-off" switching. Uses 3 C alkaline batteries, not included.

EDP#	Item Code	Description	Price
5961-00100	STREAM 33202	3C LED STREAMLIGHT YELLOW	\$66.67

Streamlight 3C Xenon



Waterproof, non-conductive polymer flashlight with clip. Features tailcap "on-off" switching and Xenon bulb. Uses 3 C alkaline batteries, not included.

EDP#	Item Code	Description	Price
5961-00200	STREAM 33250	3C XENON STREAMLIGHT YELLOW	\$52.22

Penlights & Flashlights

Streamlight Stylus® LED Penlight



Waterproof, ultra slim LED penlight lasts up to 100,000 hours. Included Glare Guard and 3 AAAA alkaline batteries. Serialized for easy identification. Momentary blink and constant on modes.

EDP#	Item Code	Description	Price
5961-00500	STREAM 65018	STYLUS LED PENLIGHT	\$24.44
5961-00900	STREAM 65030	AAAA BATTERY	\$ 1.72

Streamlight Stylus Reach® LED Penlight



Waterproof, ultra slim penlight with flexible cable extension gets deep into the tightest spot. Unbreakable 100,000 hour LED never needs replacing and is available in white or blue. Included Glare Guard and 3 AAAA alkaline batteries. Aircraft aluminum casing and tough PVC shielded cable is built to illuminate unforgiving, hard-to-reach areas. 7" cable extension allows for 14" reach.

EDP#	Item Code	Description	Price
5961-00800	STREAM 65618	STYLUS REACH LED PENLIGHT	\$33.33

Streamlight 4AA LED

Compact, waterproof, non-conductive polymer flashlight. Features 7 white LEDs and tailcap "on-off" switching. Uses 4 AA alkaline batteries.



EDP#	Item Code	Description	Price
5961-00600	STREAM 68202	4AA LED STREAMLIGHT YELLOW	\$47.28

Streamlight 4AA Xenon

Compact, waterproof, non-conductive polymer flashlight. Features tailcap "on-off" switching and Xenon bulb. Uses 4 AA alkaline batteries.



EDP#	Item Code	Description	Price
5961-00700	STREAM 68254	4AA XENON STREAMLIGHT YELLOW	\$42.22

Rayovac® Industrial™ Flashlights and Lanterns



Industrial

EDP#	Item Code	Description	Price
5242-59942	RAYCOR ILJ2AA-B	IND 2 AA SIZE SWIVEL-LITE W/BATT.	\$11.29
5242-60042	RAYCOR ISL2D-B	IND 2 D SIZE SWIVEL-LITE W/BATT.	\$14.49
5242-51042	RAYCOR IN2-CT	IND W/ CONTINUITY TESTER	\$20.10
5242-58542	RAYCOR IN2-MS	3 D SIZE ORANGE SAFETY FLASHLIGHT	\$ 9.11
5242-59042	RAYCOR IN3-MS	3 D SIZE ORANGE SAFETY FLASHLIGHT	\$ 9.27
5242-58042	RAYCOR IN2	IND 2 D SIZE W/PR2 BULB & RING HGR	\$ 6.19
5242-59742	RAYCOR IN2-KML	IND 2 D SIZE W/KRYPTON BULB,MAG&RING HGR	\$10.63
5242-00400	RAYCOR IN4	IND 2 AA SIZE W/PR4 BULB & RING HGR	\$ 6.41
5242-00300	RAYCOR I6V-B4	IND 6V LANTERN W/KRYPTON BULB & HVY DUTY LANTERN BATT	\$15.98
5242-57542	RAYCOR KFL	KRYPTON LANTERN W/STAND	\$11.29



Flashlights & Batteries

Rayovac® Industrial™ Performance Lights



Roughneck Xtreme®

EDP#	Item Code	Description	Price
5242-00700	RAYCOR R2D	2 CELL D ROUGHNECK FLASHLIGHT	\$13.76
5242-60642	RAYCOR R3D	3 CELL D ROUGHNECK FLASHLIGHT	\$14.44
5242-60742	RAYCOR IV2D	YELLOW 2 D SIZE UTILITY FLASHLIGHT	\$ 3.66
5242-59842	RAYCOR PD-1	2 AAA ALKALINE DISPOSABLE PENLITE	\$ 3.12

Rayovac® New! Sportsman 3N1 LED Flashlight

- The flashlight version of Rayovac's best-selling 3 in 1 headlight
- 3 switch settings
- In LED mode, batteries last 20 times longer vs. standard bulb
- Never replace bulb - won't crack or break
- LED bulb lasts 100,000 hours - a lifetime
- Weatherproof - withstands the elements
- Includes 3AA Alkaline batts
- Super tough construction
- Case of 4



EDP#	Item Code	Description	Price
5242-00500	RAYCOR SP3N1LED-B	SPORTSMAN 3N1 LED FLASHLIGHT	\$19.24

Rayovac® Sportsman LED Head-Lite - Hands-Free

- NEW TECHNOLOGY LED System
- Super White LED Bulb
- Batteries last 20 times longer with high efficiency LED bulb - 200 Hr runtime
- Bulb lasts a lifetime, never replace
- Unique removable Grip-Clip for hands-free use and push-button switch
- Waterproof "O" ring sealed design
- EZ change battery module
- Lifetime warranty
- Batteries not included
- Case of 4



EDP#	Item Code	Description	Price
5242-00600	RAYCOR SPHLLTED	SPORTSMAN LED FLASHLIGHT	\$19.31

Rayovac® Alkaline Maximum™ Industrial Batteries

- Formulated specifically to exceed the everyday demands of tough industrial applications
- Available in Alkaline, Heavy Duty, General Purpose, and Rechargeable
- Guaranteed against leakage
- With longer storage life, up to five years for Alkaline and four years for Heavy Duty
- Containing the industry's ultra low mercury content



EDP#	Item Code	Description	Price
5242-55542	RAYCOR AL-D	D SIZE ALKALINE BATTERY	\$2.37
5242-55042	RAYCOR AL-C	C ALKALINE BATTERY	\$2.12
5242-54042	RAYCOR AL-AA	AA ALKALINE BATTERY	\$1.39
5242-54542	RAYCOR AL-AAA	AAA ALKALINE BATTERY	\$1.42
5242-52042	RAYCOR 6V-GP	6-V LANTERN BATTERY	\$5.67
5242-56042	RAYCOR AL-9V	9V ALKALINE BATTERY	\$2.55
5242-00200	RAYCO 6V-HD	6V HD BATTERY	\$6.59

Marking Flags - Tapes

Blackburn Marking Flag



Economical plastic flag on wire staff
Sold in bundles of 100 only

EDP#	Item Code	Description	Price
7095-90195	BLKBRN 451WF-FLO-ORG	100/PK 4X5X21" FLO ORANG FLAG-WIRE	\$11.67
7095-90395	BLKBRN 451W-WHT	100/PK 4X5X21" WHITE FLAG-WIRE	\$11.67

Duct Tape

General Purpose Grade



An industrial grade polycoated cloth duct tape for H VAC applications and general purpose, packaging, bundling, carpet tape. Excellent adhesion to metal

EDP#	Item Code	Description	Price
1004-28800	3MIND 06976	2"X60YD SILVER DUCT TAPE SHUF #208479/PC600	\$ 9.95
5661-73761	SHUF PC618	2"X60 YD WHITE DUCT TAPE SHUF #203672	\$12.56
--	SHUF PC6002	2"X60YD GEN PURP DUCT TAPE	Call

Contractor Grade

200°F maximum temperature rating. 12 mm thickness. High tack natural rubber adhesive. Poly coated cloth. 11% elongation. Contractor grade; excellent stretch and conformability, easy unwind. Demanding HVAC applications to hold, seal, seam sheet metal and flex duct, exhaust vents, preformed insulation; industrial use to hold, splice, protect and package.

EDP#	Item Code	Description	Price
5661-71661	SHUF PC6212	2"X60YD SILVER DUCT TAPE	\$7.65

Call Agricultural Sales at
800-767-2273

MRO Supplies



Tapes - Packaging - Tarps

Premium Grade



Shurtape's T-REX PC 745 Duct Tape is Ferociously Strong Tape!

Designed for rough surfaces, heavy repairs and used in the manufactured housing industry, T-REX utilizes Extra Thick adhesive for quick stick on rough surfaces. Superior strength with high count cloth and waterproof backing provides durable protection. Available in Metallic Silver, T-REX is 2" x 40yd Heavy Duty Duct Tape. It's 17mil thick and will work in 50°F to 200°F temperatures.

EDP#	Item Code	Description	Price
5661-00461	SHUF PC745	2" x 60 YD T-REX HD DUCT TAPE	\$19.98

Sealing Tape

Strapping tape for your every need. From economy low tensile strength to premium grade fibre glass re-enforced high tensile. Shuford has the right product for you.

EDP#	Item Code	Description	Price
1004-29000	CP8334 3MIND 24803	2209 3/4" x 60 YD. MASKING TAPE CP8334	\$2.05
1004-29100	CP831 3MIND 24804	2209 1" X 60 YD. MASKING TAPE CP831	\$1.79
1004-29300	CP832 3MIND 24807	2209 2" X 60 YD. MASKING TAPE CP832	\$4.40
1004-29400	CP661 3MIND 58036	203 1" X 60 YD. MASKING TAPE CP661	\$3.29
1003-00200	EV5734 3M 69764	1700 3/4" X 60' VINYL ELECTRICAL TAPE	\$1.67
1004-29700	GS4901	8934 1" X 60 YDS. REINFORCING STRAPPING TAPE 3MIND 86520	\$4.00
5661-72561	SHUF GS50034	GS-500 3/4" X 60 YD. REINFORCING STRAPPING TAPE	\$1.49
1004-30000	GS5011	897 1" X 60 YD. REINFORCING STRAPPING TAPE 3MIND 86525	\$6.85
1004-30100	GS5013	897 3" X 60 YD. REINFORCING STRAPPING TAPE 3MIND 98729	\$16.79

For More Information on These Products and Other Products You Are Looking For, Call Agricultural Sales at the John Day Company at 800-767-2273.

Serving the Midwest from 3 Convenient Locations

- **Omaha, NE**
- **Milan, IL**
- **Redwood Falls, MN**

Shop Towels/Wipers

Wiper DRC



Sellars offers wipers, sorbents, towels and tissue in convenient and utilizes a double recycled (DRC) technology that allows unmatched wet-to-dry tensile strength, super absorbency and reusability. Sellars is an industry leader in a vast product mix and allows you to match your wiper/towel to the job at hand. Contact your JDC location for more information and a free sample.

WaterWeave Wipers: Handles the toughest wiping tasks with ease. Affordable alternative to cloth rental shop towels and cleans even the roughest surfaces. WaterWeave won't fall apart when wiping up around sharp corners and is great for solvents, grease, oil and water.

DRC Series:

500 Series: Heavy weight, popular wiper for toughest cleanup, most absorbent wiper on market, extra strong.

400 Series: Standard, all purpose wiper, economical for small jobs yet able to tackle the big jobs.

300 Series: Light duty, economical and light weight wiper with strength and absorbency that only DCR can offer.

DCR Rolls: Center Pull Wipers in convenient dispenser box with carrying handle or for use on wall mounted dispensers.

Red Shop Towels: The replacement for rental shop towels and rags. Made with the strongest DRC material available in commercial market. Innovative all weather bucket protects wipers from the elements.

EDP#	Item Code	Description	Shts/Pkg	Price
5575-02200	SELLAR 70150	10X13 REFILL RED SHOP TOWELS	140	\$13.80
5575-02900	SELLAR 55207	10X13 BLUE SHOP TOWEL REFILL	200	\$13.81
5575-02600	SELLAR 55208	BLUE SHOP TOWEL BUCKET 9.9"x13.1"	200	\$19.14
5575-00500	SELLAR 30600	11 X 9.4 WHITE ROLL TOWEL	72	\$ 2.77
5575-01800	SELLAR 20200	9.5 X 16.5 WHITE POP-UP WIPER DRC 200	126	\$ 6.96
5575-02300	SELLAR 20421	9.9x13.1" PITCREW SHOP RAGS	3.67	\$13.84
5575-02800	SELLAR 50113	12.5 x 13" QTR FOLD WHITE WIPERS	60	\$ 3.08
5575-00700	SELLAR 5020001	9.5 X 16.5 WHITE POP-UP WIPER DRC 500	100	\$ 7.03
5575-00400	SELLAR 10255	9X13 CENTER PULL BLUE WIPER	240	\$16.77
4617-01700	NOGG KCC80596	JRD JUMBO ROLL DISPENSER	--	\$60.76
5575-02500	SELLAR 50300	12-1/2"X750' HD WHITE JUMBO	750	\$41.67

Janitorial Supplies

Glass Cleaner

860 Glass 7 Surface Cleaner is a fast acting foam that cuts thru dirt, grease and grime to clean a variety of surfaces. Uses include glass, baked enamel objects, auto windshields, porcelain, tiles, vinyl; Plexiglas laminated surfaces, countertops, stainless steel, chrome, bumpers safety glass and showcases.

- Wipes off for a bright and sparkling, streak free finish
- Will not scratch or harm glass, Plexiglas or plastic materials
- USDA C-1 approved
- Does not leave a film and will not harm painted surfaces
- Retards fogging and cuts thru greasy residue and factory film



EDP#	Item Code	Description	Price
4481-02900	AERVOE 860	GLASS/SURFACE CLEANER 19OZ.	\$3.46

MRO Supplies



Maintenance

Absorbents

MRO Plus - All-Purpose Sorbent



Our MRO Plus is highly effective for cleanup and removal of oil and water-based liquids. A heavyweight, gray dimpled material combining thickness, strength and high absorbency, low-linting MRO Plus is suitable for virtually any industrial application. Perforation permits use of precisely the right amount, and the product's dirt-masking gray color fosters longer use before disposal. Packages 100/bale. Type: Pads

EDP#	Item Code	Description	Size	Wt. Lb.	Price
1611-14000	SPC MRO100	ALL PURP OIL/WTR PAD 16X20	16" x 20"	18	\$118.22

Oil Sorbents



Economical oil only pads for clean-up on land or water. Designed for Foot Traffic.

EDP No.	Description	Size in. - ft.	Price
1611-13300	SPC BM30 - TRAFFIC MAT	30" x 150'	\$301.36

Oil Plus™ Sorbents

Superior performing oil only white dimpled pads and rolls for industry. A heavyweight dimpled material notable for its low linting, thickness and strength, Oil Plus does not pick up water. Suitable for industrial and environmental applications, Oil Plus is perforated to permit the use of precisely the right amount of material - whatever the job.

EDP#	Item Code	Description	Desc. - Size	Type	Wt.	Price
1611-14600	SPC OP100	OILPLUS,PAD 16X20	16" x 20"	Pads	10.00	\$104.77
		100/BALE				
1611-14700	SPC OP15	Oil Plus, Dimpled	15" x 150'	Rolls	15.00	\$105.25
1611-14800	SPC OP15-P	Perfed, Dimpled	15" x 150'	Rolls	15.00	\$131.56
1611-14900	SPC OP30	Oil Plus, Dimpled	30" x 150'	Rolls	30.00	\$164.31
1611-15000	SPC OP30-P	Perfed, Dimpled	30" x 150'	Rolls	30.00	\$200.42

ENV™ Oil Sorbents

New to the SPC product line. These contractor grade, oil-only sorbents are ideal for environmental applications. ENV Oil Sorbents comprise the best available basic meltblown polypropylene, and are available as pads, rolls, and booms in standard sizes and wts.. ENV Oil Sorbents, packed in distinctive green bags, are an obvious choice when you need low cost plus high performance.

EDP#	Item Code	Description	Desc. - Size	Type	Wt.	Price
1611-13600	SPC ENV200	OIL ONLY PAD 16X20	16" x 20"	PADS	18	\$ 85.62
		200/BALE				
1611-13700	SPC ENV810	Oil Only, ECONOMY-BOOM, 4/BALE	8" x 10'	BOOM	28	\$166.12

Maintenance

Absorbents

Allwik® Pillows

Absorbent pillows meet a variety of cleanup and safety needs. Frequently combined with drip pans, these pillows are excellent for absorbing spills and leaking fluids in tight spaces. Allwik for absorption of oil, water and chemicals.

EDP#	Item Code	Description	Size	Case	Price
1611-13200	SPC AW99	ALLWIK PILLOW	9" x 9"	32	\$131.56
1611-13100	SPC AW430	ALLWIK SOC	3" x 4'	30	\$152.53

Allwik® Drum Top Covers

Drum top covers are pre-cut to fit 55-gallon drums with one or two bungholes. They prevent pump drips from reaching the floor, and keep drum tops and drum storage areas clean. Allwik for oil, water and chemicals.

EDP No.	Item Code	Desc. - Size	Type	Case	Price
1611-13500	SPC DTA25	22" Dia.	OIL ONLY	25	\$119.14

Peerless Recycled Wiping Cloths

- Packaged in 50lb dispenser boxes
- Boxes are clearly stamped by product code

EDP#	Item Code	Description	Net Price
4873-81173	PEER WLK	LIGHTKNIT WHT WIPING CLOTH	\$75.81
4873-81473	PEER NW	NEAR WHITE WIPING CLOTH	\$45.16

Absorbent Clay

Oil-Dri® Premium Industrial Floor Absorbent

Absorbs and retains oil, water and grease. Great under fork lift traffic.

EDP#	Item Code	Description	Price
4672-00100	OILDRI 101050-L40	OIL-DRI 50#BAG FLOOR ABSORB	\$12.95

Sweeping Compound

Omaha Hy-Grade Sweeping Compound

Cedar Moss. Color: Red. 15 gal. 100 lbs.

For non-waxed wood and cement floors in stores, offices, factories, buildings and schools; made with parafine oil kiln dried sawdust and wood fibre; balanced in weight with silica sand to hug the floor. It is efficient and economical. Packed in 80 * 50 lb. boxes.

EDP#	Item Code	Description	Price
4695-81095	JDC HYGRADE	80# BOX RED SWEEPING COMPND	\$35.38
4695-82895	JDC HYGRADE 50# BOX	50# BOX RED SWEEPING COMPND	\$22.78



Your Midwest
Distributor
since 1909.



3M Industrial Supplies

Pads

3M™ Scotch-Brite Hand Pads



- Hand Pads that outperform steel wool and wire brushes.
- Fast-cutting with consistent finish for surfaces that need to be cleaned or finished by hand.
- Pads are non-rusting and can be used with water or solvents.
- 20 Pads Per Box.

EDP No.	Item Code	Description	Price
1004-04600	3M 04029	#7447 HP-HP G.P HAND PADS MAROON	\$1.17
1004-04500	3M 04028	#7448 HP-HP U FINE HAND PAD LIGHT GRAY	\$1.17

3M™ Scotch-Brite General Purpose Scrubbing Pad #96



- Thick, Hand-size, medium-duty pad for everyday general-purpose cleaning jobs.

EDP No.	Item Code	Description	Price
1004-07400	3M 08293	#96 COMMERCIAL SCOURING PAD 6X9	\$0.98

3M Super 77 Spray Adhesive



3M™ Spray Adhesives are generally recommended for projects with larger surface areas and lightweight materials.

- Versatile tool for bonding most light-weight materials.
- Fast aggressive tack, long bonding range, little or no soak in.

EDP No.	Item Code	Description	Price
1004-09500	3M 21210	#77 SUPER 24 OZ SPRAY ADH	\$22.67

3M Industrial Supplies

Spray Adhesives

3M 90 High Strength Adhesive



3M™ Spray Adhesives are generally recommended for projects with larger surface areas and lightweight materials.

- One-minute dry time under most conditions.
- High contact strength and high temperature resistance.

EDP No.	Item Code	Description	Price
1004-11800	3M 30023	#90 24 OZ ADHESIVE SPRAY	\$32.48

Electrical Tapes

Scotch® Super 33+ Vinyl Electrical Tape



Superior mechanical/electrical insulation. Premium grade. Super stretchy in all weather. 0°F (-18°C) -220°F (105°C). Easily conforms to irregular surfaces. Aggressive adhesive. Resists UV rays, abrasion, corrosion, alkalis and acids. Flame retardant.

Tape Thickness - 7 mil

U.V. Resistance - Exceeds UL510 requirements

Temperature Rating - 220°F - 105°C

Typical Applications - Primary insulation for splices up to 600V. Protective jacketing.

Specifications/Certifications and Listings - A-A-55809 ASTM D-3005 Type 1 listed 539H LR48769

EDP No.	Item Code	Description	Price
1004-06000	3M 06132	33+ SUPER 3/4"X66' VINYL	\$7.37

Scotch® 35 Vinyl Electrical Tape



Superior mechanical/electrical insulation. Premium grade. Super stretchy in all weather. 0°F (-18°C) -220°F (105°C). Easily conforms to irregular surfaces. Aggressive adhesive. Resists UV rays, abrasion, corrosion, alkalis and acids. Flame retardant.

Tape Thickness - 7 mil

U.V. Resistance - Exceeds UL510 requirements

Temperature Rating - 220°F - 105°C

Typical Applications - Primary insulation for splices up to 600V. Protective jacketing.

Specifications/Certifications and Listings - A-A-55809 ASTM D-3005 Type 1 listed 539H LR48769.

EDP#	Item Code	Description	Price
1004-01100	3MIND 10810	35 3/4X66'RED VINYL ELECTRICAL TAPE	\$6.92



3M Industrial Supplies

Masking Tapes

Tartan™ 200 Masking Tape



Specifications:

- Utility purpose paper tape.
- Tape Thickness - 5.5 mil.
- Temperature Rating - 199°F (93°C).
- Typical Applications - non-critical masking and holding.

EDP#	Item Code	Description	Price
1003-01300	3M 71180	#200 1"X60YD MASKING TAPE	\$2.12

Nylon Ties

3M Brand Self-Locking Ties



Natural color (clear) or UV protected black
NOTE: 6", 8", 12" ties packaged 100 per bag, 15" packaged 50 per bag

EDP#	Item Code	Description	Tensile Strgth.	Price
1003-05400	3M 41929	4" CABLE TIE, BLACK	18 lbs.	\$0.02
1003-05900	3M 41935	6" CLEAR TIES	30 lbs.	\$0.03
1003-06500	3M 41937	8" CLEAR TIES	50 lbs.	\$0.03
1003-06100	3M 41941	12" CLEAR TIES	50 lbs.	\$0.06
1003-05800	3M 41933	UV PROTECTED 6" BLACK TIES	30 lbs.	\$0.03
1003-06400	3M 41939	UV PROTECTED 8" BLACK TIES	50 lbs.	\$0.04
1003-06000	3M 41943	UV PROTECTED 12" BLACK TIES	50 lbs.	\$0.07
1003-06200	3M 41977	15" CABLE TIE, BLACK	50 lbs.	\$0.09
1003-06300	3M 41978	15" CABLE TIE, BLACK	50 lbs.	\$0.08
1003-07900	3M 43203	15" CABLE TIE, HD, BLACK	120 lbs.	\$0.16

Tyton Heavy Duty Black Cable Tie



25 per package

EDP#	Item Code	Description	Tensile Strgth.	Price
1883-00100	CODESU T150L0X2	32" BLACK HD LASHING TIE	175 Lbs.	\$2.52
1883-00200	150-31091	T50R, 8" TIE FOR TREE MOUNT	50 Lbs.	\$.69
1883-00300	150-31090	T30R, 6" TIE FOR TREE MOUNT	30 Lbs.	\$.28

Heavy Duty Nylon Tie Systems

Dymetec®-N, based on 6/6 nylon, is lighter, more flexible, and easier to handle than conventional metal or plastic ties of equal strength.

Heavy Duty Nylon Tie System:

- Stronger
- Lighter Weight
- Highly Versatile Tie System
- Available in 100' Rolls
- Strap: Width 0.500±0.010 in.
- Head: Uses unique stainless steel pawl to grip the strap.
Textured sides for improved handling.
- Tensioner Tool: Used to "snug up" strap in head and cut strap in single step.
Amount of tension (snugness) can be varied.



EDP#	Item Code	Description	Price
2278-00100	6DYMET 400	TENSIONER TOOL, DYMETEC	\$57.90
2278-00200	6DYMET NK25E20	TIE, NYLON, SELF-LOCKING HEAD	\$10.91
2278-00300	6DYMET NK100F25H	NYLON TIE KIT, 100' STRAP	\$18.75

Electronics

Weather Stations



General Tools & Instruments is a leader in economical Weather Stations and related detectors.

WS1500 Deluxe Professional Wireless Weather Station

- Average & gust wind speed, High wind alarm
- Wind direction and wind chill temperature
- Min/Max wind speed and temp/humidity sensor
- Wireless rain gauge and Barometric pressure reading
- Indoor / outdoor temp, humidity, heat index
- Requires 10 "AA" batteries (not included)

RGR126 Wireless Rain Gauge w/Temp Display & Remote Rain Bucket & Temp Sensor

- Provides rain history and temperature
- Daily rainfall, cable free collection canister is self emptying
- Long range capability allows collector to be placed up to 300' from main unit
- Rainfall alarm, daily alarm, 12/24 hour clock
- LCD console is table or wall mountable
- Min/Max temperatures with sensing cycle every 30 sec.
- Requires 4 "AA" batteries (not included)

WR103 Digital NOAA Weather Radio

- Checks latest weather forecast, monitors U.S. emergency, EAS weather bulletins
- Broadcasts tornado and storm alerts, forecasts and warnings
- Water resistant construction
- 7 adjustable SAME code settings, digital PLL tuning seeks all 7 NOAA channels
- 12/24 hour clock, daily alarm/ snooze function
- Portable & includes AC charger and 3 "AA" batteries

EDP#	Item Code	Description	Net Price
2803-00700	GENTOO WS821	WIRELESS WEATHER STATION	\$166.17
2803-00500	GENTOO RGR150	WIRELESS RAIN GAUGE W/TEMP	\$ 58.16
2803-00600	GENTOO WR103	NOAA DIGITAL WEATHER RADIO	\$ 49.85

Bronze Ball Valves

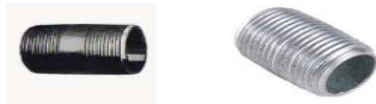


No. 171N Ball Valve, 600-Lbs. water, oil and gas 150-Lbs. steam, threaded ends, teflon asbestos packing, chrome plated, brass ball.

EDP No.	Item Code	Size, Inches	Each
4389-55100	JDC 1/4" 171N	1/4	\$5.77
4389-69000	JDC 3/8" 171N	3/8	7.83
4389-52450	JDC 1/2" 171N	1/2	6.92
4389-64450	JDC 3/4" 171N	3/4	10.14
4389-50000	JDC 1" 171N	1	15.78
4389-60700	JDC 1-1/4" 171N	1-1/4	23.22
4389-58850	JDC 1-1/2" 171N	1-1/2	34.43
4389-62550	JDC 2" 171N	2	53.86



BLACK & GALVANIZED PIPE NIPPLES



Size	BLACK		GALVANIZED	
	EDP No.	Each	EDP No.	Each
1/8 x Close	4389-58750	\$ 1.06	4389-58800	\$1.48
1/8 x 1-1/2	4389-58000	1.19	4389-58050	1.53
1/8 x 2	4389-58100	1.27	4389-58150	1.72
1/8 x 2-1/2	4389-58200	1.41	4389-58250	1.72
1/8 x 3	4389-58300	1.57	4389-58350	1.96
1/8 x 3-1/2	4389-69350	1.72	4389-58400	2.09
1/8 x 4	4389-58450	2.00	4389-58500	2.30
1/8 x 4-1/2	4389-58550	2.31	4389-69450	2.96
1/8 x 5	4389-58600	2.66	4389-69500	3.90
1/8 x 5-1/2	4389-58650	2.91	4389-69550	4.19
1/8 x 6	4389-58700	3.62	4389-69600	4.38
1/4 x Close	4389-57050	1.26	4389-57100	1.54
1/4 x 1-1/2	4389-56250	1.34	4389-56300	1.64
1/4 x 2	4389-56350	1.50	4389-56400	1.92
1/4 x 2-1/2	4389-56450	1.69	4389-56500	2.04
1/4 x 3	4389-56550	1.86	4389-56600	2.52
1/4 x 3-1/2	4389-56650	2.06	4389-56700	2.50
1/4 x 4	4389-56750	2.28	4389-56800	2.61
1/4 x 4-1/2	4389-56850	2.46	4389-69650	3.13
1/4 x 5	4389-56900	3.70	4389-69700	3.70
1/4 x 5-1/2	4389-56950	3.21	4389-69750	4.29
1/4 x 6	4389-57000	4.01	4389-69800	4.48
3/8 x Close	4389-69150	1.39	4389-69200	1.81
3/8 x 1-1/2	4389-68300	1.48	4389-68350	1.93
3/8 x 2	4389-68400	1.83	4389-68450	2.16
3/8 x 2-1/2	4389-68500	1.81	4389-68550	2.23
3/8 x 3	4389-68600	2.14	4389-68650	2.51
3/8 x 3-1/2	4389-68700	2.28	4389-68750	3.23
3/8 x 4	4389-68800	2.53	4389-68850	3.23
3/8 x 4-1/2	4389-68900	2.76	4389-69850	3.41
3/8 x 5	4389-68950	3.69	4389-69900	4.42
3/8 x 5-1/2	4389-69000	3.49	4389-69950	4.79
3/8 x 6	4389-69050	4.13	4389-69100	5.03
1/2 x Close	4389-55000	.98	4389-55050	1.09
1/2 x 1-1/2	4389-53750	1.06	4389-53800	1.24
1/2 x 2	4389-53850	1.11	4389-53900	1.36
1/2 x 2-1/2	4389-53950	1.18	4389-54000	1.43
1/2 x 3	4389-54050	1.33	4389-54100	1.54
1/2 x 3-1/2	4389-54400	1.46	4389-54450	1.60
1/2 x 4	4389-54500	1.64	4389-54550	1.89
1/2 x 4-1/2	4389-54600	1.60	4389-70000	1.96
1/2 x 5	4389-54650	1.96	4389-54700	2.29
1/2 x 5-1/2	4389-54750	2.20	4389-54800	2.24
1/2 x 6	4389-54850	2.34	4389-54900	2.39
3/4 x Close	4389-66900	1.33	4389-66950	1.46
3/4 x 1-1/2	4389-65900	1.40	4389-65950	1.43
3/4 x 2	4389-66000	1.47	4389-66050	1.64
3/4 x 2-1/2	4389-66100	1.62	4389-66150	1.66
3/4 x 3	4389-66200	1.79	4389-66250	1.98
3/4 x 3-1/2	4389-66400	1.99	4389-66450	2.01
3/4 x 4	4389-66500	2.17	4389-66550	2.39
3/4 x 4-1/2	4389-66600	2.41	4389-70050	2.41
3/4 x 5	4389-66650	2.62	4389-66700	2.80
3/4 x 5-1/2	4389-66750	2.53	4389-70100	3.18
3/4 x 6	4389-66800	3.04	4389-66850	3.34
1 x Close	4389-52350	1.94	4389-52400	2.14
1 x 2	4389-51200	2.17	4389-51300	2.26
1 x 2-1/2	4389-51350	2.17	4389-51400	2.46
1 x 3	4389-51450	2.41	4389-51500	2.71
1 x 3-1/2	4389-51950	2.67	4389-52000	3.26
1 x 4	4389-52050	2.96	4389-52100	3.72
1 x 4-1/2	4389-52150	3.17	4389-70150	3.43
1 x 5	4389-52200	3.42	4389-70200	3.60
1 x 5-1/2	4389-69400	3.29	4389-70250	4.01
1 x 6	4389-52250	4.01	4389-52300	4.46

Larger sizes, up to and including 2" diameter, are available from Omaha stock.



The easy metal restorer that's easy on your skin!

Harris Labs **Evapo-Rust** will not harm metals, rubber, plastic, PVC, Viton, most paints/powder coating or un-rusted steel. It is safe to use...non-toxic, non-corrosive, non-flammable and contains no acids, alkalis or petroleum solvents.

Evapo-Rust is biodegradable and is a water based product that can make rust disappear in minutes, without scrubbing. 1 Gallon de-rusts up to 300 lbs. of steel (about 1/2 lb. of rust).



EVAPORUST Super Safe Rust Remover:

- Removes rust quickly without scrubbing
- No fumes or bad odors
- Non-toxic
- Non-corrosive
- Safe on skin
- No VOC's
- Water soluble
- Contains no acids, bases or solvents
- Will not harm un-rusted steel
- Safe disposal in sewer
- Safe on other metals

DE-RUST TOOLS FASTENERS GAS TANKS FIREARMS FARM EQUIPMENT RESTORATION PARTS MACHINED PARTS INJECTION MOLDS AND MORE!



EDP#	HARRIS #	Description	CASE	LIST PRICE
2979-00200	ER004	EVAPORUST QUART	4/CS	\$ 9.87
2979-00300	ER012	EVAPORUST GALLON	4/CS	\$ 24.00
2979-00400	ER013	EVAPORUST 5 GALLON	1/EA	\$106.67

JOHN DAY COMPANY

•
Omaha, NE
800-767-2276

•
Milan, IL
800-767-2273

•
Redwood Falls, MN
800-767-8870



ZINC PLATED HEX NUTS



GRADE 2					GRADE 5					GRADE 8			
Bolt Size	N.C. Per 100	EDP No.	N.F. Per 100	EDP No.	N.C. Per 100	EDP	N.F. Per 100	No. In. Ctn.	N.C. Per 100	EDP No.	EDP No.	N.F. Per 100	
1/4	6152-30634	\$3.00	6152-32014	\$4.00	6152-31684	\$3.00	6152-07000	\$3.00	100	6152-33094	\$3.00	6152-33424	\$7.00
5/16	6152-30664	4.00	6152-32044	6.00	6152-31714	4.00	6152-07800	5.00	100	6152-33124	5.00	6152-33454	9.00
3/8	6152-30694	6.00	6152-32074	8.00	6152-31744	7.00	6152-07900	6.00	100	6152-33154	9.00	6152-33484	13.00
7/16	6152-30724	13.00	6152-32104	15.00	6152-31774	12.00	6152-08000	12.00	50	6152-33184	13.00	6152-33514	24.00
1/2	6152-30754	17.00	6152-32134	20.00	6152-31804	18.00	6152-08100	18.00	50	6152-33214	18.00	6152-33544	21.00
9/16	6152-30784	19.00	6152-32164	28.00	6152-31834	28.00	6152-08200	32.00	25	6152-33244	28.00	6152-33574	55.00
5/8	6152-30814	32.00	6152-32194	35.00	6152-31864	34.00	6152-08300	33.00	25	6152-33274	36.00	6152-33604	60.00
3/4	6152-30844	47.00	6152-32224	57.00	6152-31894	52.00	6152-08400	50.00	20	6152-33304	55.00	6152-33634	71.00
7/8	6152-30874	78.00	6152-32254	101.00	6152-31924	90.00	6152-08500	92.00	15	6152-33334	92.00	6152-33664	137.00
1	6152-30904	101.00	6152-32284	159.00	6152-31954	131.00	6152-08600	146.00	10	6152-33364	133.00	6152-33694	236.00
1-1/8	6152-30934	193.00	--	--	--	--	--	--	--	6152-33394	207.00	--	--
1-1/4	6152-30964	303.00	6152-32314	259.00	--	--	--	--	--	--	--	--	--

ZINC-PLATED SLOTTED HEX NUTS GRADE 2					LOCK NUTS—NYLON INSERT PLATED					PREVAILING TORQUE LOCKNUTS ITEM CODE: ROCK					
Bolt Size	N.C. Per 100	EDP No.	N.F. Per 100	No. In. Ctn.	N.C. Per 100	EDP No.	N.F. Per 100	No. In. Ctn.	N.C. Per 100	EDP No.	N.F. Per 100	No. In. Ctn.			
1/4	6152-65624	\$21.00	--	\$ 58.17	100	6152-48604	\$6.00	6152-48274	\$6.00	100	6152-31019	\$5.00	6152-34019	\$5.00	100
5/16	6152-65634	19.00	--	69.89	100	6152-48694	6.00	6152-18304	8.00	100	6152-31319	7.00	6152-34319	14.00	100
3/8	6152-65644	29.00	6152-65674	36.00	100	6152-48754	8.00	6152-48334	13.00	100	6152-31619	10.00	6152-34619	11.00	100
7/16	6152-65684	35.00	6152-65704	39.00	50	6152-48784	11.00	6152-48364	15.00	50	6152-31919	18.00	6152-34919	20.00	100
1/2	6152-65694	67.00	6152-65714	25.00	50	6152-48814	22.00	6152-48394	31.00	50	6152-32219	23.00	6152-35219	26.00	100
9/16	--	--	--	--	--	--	--	--	--	--	6152-32519	69.00	6152-35519	41.00	100
5/8	6152-65724	50.00	6152-65734	67.00	25	6152-48124	44.00	6152-48484	51.00	25	6152-32819	46.00	6152-35819	76.00	50
3/4	6152-65744	86.00	6152-65754	95.00	20	6252-48154	55.00	6152-48514	61.00	20	6152-33119	75.00	6152-36119	78.00	50
7/8	6152-65764	216.00	6152-65774	136.00	15	6152-48184	115.00	6152-48544	116.00	15	6152-33419	105.00	6152-36419	225.00	25
1	6152-65604	187.00	6152-65614	232.00	10	6152-48214	154.00	6152-48574	149.00	10	6152-33719	317.00	6152-36719	341.00	25

* While supply lasts.

Note: All specifications are the same as hex nuts.

CLIPPED HEAD PLOWSHARE SCREWS

EDP No.	Item	Dia./Length	Std. Pkg.	Price Per 100
4294-02900	2105-626B	3/8" x 1-1/4"	100	\$40.00
4294-03000	2105-628B	3/8" x 1-1/2"	100	43.00
4294-03100	2105-671B	7/16" x 1-1/4"	50	57.00
4294-03200	2105-673B	7/16" x 1-1/2"	50	61.00
4294-03300	2105-714B	1/2" x 1-1/4"	50	76.00
4294-03400	2105-716B	1/2" x 1-1/2"	50	82.00

Order nuts separately.

SPECIAL HEAD PLOW SCREWS

Diameter, Inches
Price per 100 (50 per Carton)

EDP No.	Item	Size	Std. Pkg.	Price Per 100
5444-60294	2107-630B	3/8x1-3/4 w/7/16" Hd.Sp.Pl.Bolt	100	\$31.35
5444-60574	2107-677B	7/16x2 w/1/2" Hd. Sp. Pl. Bolt	50	46.75
5444-60714	2107-679B	7/16x2-1/2 w/1/2" Hd.Sp.Pl. Bolt	50	56.51

Note: Order nuts separately.

PLOW SCREW, #3 GRADE 5, H.T. BLACK

EDP No.	Size	No. In Ctn.	Price Per 100
4294-00100	3/8 x 1	100	\$30.00
4294-00200	3/8 x 1-1/4	100	32.00
4294-00400	3/8 x 1-1/2	100	34.00
4294-00400	3/8 x 1-3/4	100	39.00
4294-00500	3/8 x 2	100	42.00
4294-00600	3/8 x 2-1/4	50	48.00
4294-00700	3/8 x 2-1/2	50	54.00
4294-00800	7/16 x 1-1/4	50	49.00
4294-00900	7/16 x 1-1/2	50	51.00
4294-01000	7/16 x 1-3/4	50	56.00
4294-01100	7/16 x 2	50	60.00
4294-01200	7/16 X 2-1/4	50	67.00
4294-01300	7/16 X 2-1/2	50	73.00
4294-01400	7/16 X 3	50	86.00
4294-01600	1/2 X 1-1/2	50	66.00
4294-01700	1/2 X 1-3/4	50	70.00
4294-01800	1/2 X 2	50	75.00
4294-01900	1/2 X 2-1/4	50	81.00
4294-02000	1/2 X 2-1/2	50	88.00
4294-02100	1/2 X 3	50	104.00
4294-02300	5/8 X 2	25	159.00
4294-02400	5/8 X 2-1/2	25	191.00
4294-02500	5/8 X 3	25	227.00

Order nuts separately.

For plow and carriage bolts—order desired size separately.



METRIC CAP SCREWS



Course Thread, Property Class 8.8 (Same as Grade 5)

Length(mm)	EDP No.	Per Box	Per 100	Length(mm)	EDP No.	Per Box	Per 100
4mm x 10	6152-15154	50	\$6.11	12mm x 16	6152-16684	25	\$69.54
x 16	6152-15184	50	6.18	x 20	6152-16714	25	50.23
x 20	6152-15214	50	8.01	x 30	6152-16744	25	60.83
6mm x 10	6152-15364	50	8.47	x 40	6152-16774	25	78.29
x 16	6152-15424	50	10.97	x 50	6152-16804	25	69.94
x 20	6152-15454	50	11.80	x 60	6152-16864	25	104.01
x 30	6152-15514	50	13.23	x 70	6152-16954	25	104.01
x 40	6152-15544	50	13.23	x 80	6152-16984	15	106.56
x 50	6152-15574	50	21.51	x 90	6152-17014	15	118.26
x 60	6152-15604	50	20.29	x 100	6152-17044	15	136.03
x 70	6152-15634	25	31.62	x 110	6152-17074	15	173.71
x 80	6152-15664	25	32.33	x 120	6152-17104	15	211.88
8mm x 10	6152-15784	50	19.96	x 130	6152-17134	15	288.44
x 16	6152-15814	50	19.13	14mm x 20	6152-17584	15	87.67
x 20	6152-15844	50	21.11	x 30	6152-17644	25	82.20
x 30	6152-15904	50	26.12	x 40	6152-17674	25	101.02
x 40	6152-15934	50	28.81	x 50	6152-17734	25	141.90
x 50	6152-15964	50	29.06	x 60	6152-17764	15	141.23
x 60	6152-15994	25	35.38	x 70	6152-17794	15	150.42
x 70	6152-16024	25	45.96	x 80	6152-17824	15	157.88
x 80	6152-16054	15	56.87	x 90	6152-17854	15	218.93
x 90	6152-16084	15	60.81	x 100	6152-17884	15	230.00
x 100	6152-16114	15	70.98	x 110	6152-17914	15	269.74
x 110	6152-16144	15	98.63	x 120	6152-17944	15	292.08
x 120	6152-16174	15	106.82	x 130	6152-17974	15	310.93
10mm x 20	6152-16204	50	33.07	16mm x 30	6152-17344	15	118.01
x 30	6152-16294	50	39.20	x 50	6152-17404	15	161.46
x 40	6152-16354	25	47.73	x 60	6152-17164	15	245.12
x 50	6152-16414	25	50.88	x 70	6152-17194	15	184.74
x 60	6152-16474	25	56.87	x 80	6152-17434	15	217.87
x 70	6152-16504	25	68.78	x 90	6152-17224	15	258.08
x 80	6152-16534	15	76.54	x 100	6152-17254	15	323.89
x 90	6152-16564	15	89.78	x 110	6152-17464	15	267.18
x 100	6152-16594	15	96.64	x 110	6152-16624	15	125.07
x 120	5444-17284	15	274.15	x 120	6152-06000	15	119.84
x 140	5444-17524	15	373.84	x 150	6152-17554	15	460.60
				18mm x 40	6152-18004	15	243.26
				x 60	6152-18034	15	241.46
				x 80	6152-18064	15	284.20
				x 100	6152-18094	15	322.82

METRIC HEX NUTS

EDP No.	Bolt Size	Per Box	Per 100	EDP No.	Bolt Size	Per Box	Per 100
6152-18124	4mm	50	\$1.68	6152-18304	12mm	50	\$22.31
6152-18184	6mm	50	3.37	6152-18334	14mm	25	32.27
6152-18244	8mm	50	6.72	6152-18364	16mm	25	26.68
6152-18274	10mm	50	15.19	6152-18394	18mm	25	75.36

GRADE 5 TOP LOCKNUT COARSE THREAD ZINC PLATED

Allows nut to be threaded all the way on the bolt before wrenching is required. All metal one piece construction withstands severe vibration and shock loads.

EDP No.	Part No.	Size	Pkg. Qty.	List Price Per 100
6152-65914	4765-029	1/4-20	100	\$6.93
6152-65924	4765-030	5/16-18	100	7.20
6152-65934	4765-031	3/8-16	100	18.92
6152-65944	4765-032	7/16-14	100	32.92
6152-65954	4765-033	1/2-13	100	35.24
6152-65964	4765-035	5/8-11	50	70.67
6152-65974	4765-036	3/4-10	50	155.66

N.C. AND N.F. PLATED JAM NUTS



Bolt Size Inches	EDP No.	N.C. Price Per 100	N.F. Price Per 100	No. in Carton	
1/4	6152-31024	\$4.56	6152-32344	\$3.06	100
5/16	6152-31054	4.61	6152-32374	4.40	100
3/8	6152-31084	5.81	6152-32404	6.11	100
7/16	6152-31114	10.84	6152-32434	10.39	50
1/2	6152-31144	13.44	6152-32464	12.22	50
5/8	6152-31174	31.87	6152-32494	31.90	25
3/4	6152-31204	50.39	6152-32534	36.39	20

Threads per inch same as hex nuts.

CASTLE NUTS PLAIN FINISH N.F. ONLY



Bolt Size Inches	EDP No.	N.F. Price Per 100	No. in Carton	Threads Per Inch
1/4	8325-00825	\$77.29	100	28
5/16	8325-00925	87.19	50	24
3/8	8325-01025	52.98	50	24
7/16	8325-01125	103.69	50	20
1/2	8325-01225	93.03	50	20
9/16	8325-01325	196.26	25	18
5/8	8325-01425	165.11	25	18
3/4	8325-01525	358.48	10	10
7/8	8325-01625	377.41	10	9
1	8325-01725	828.63	10	14

STD. THREAD METRIC NYLON INSERT LOCKNUTS



EDP No.	Item	Bolt Size Metric	Price Per 100	No. In Ctn.	Threads Per mm	Width Across Flat (mm)	Thickness
6152-18814	2823-004	4	\$6.14	25	.7	7	5
6152-18844	2823-006	6	6.81	25	1.0	10	6
6152-18874	2823-008	8	8.26	25	1.25	13	8
6152-18904	2823-010	10	24.08	15	1.50	17	10
6152-18934	2823-012	12	34.17	15	1.75	19	14
6152-18964	2823-016	16	60.22	15	2.00	24	16

MRO Supplies



SPRING LOCK WASHERS—PLATED



Bolt Size	Qty. Per Box	Price Per 100	Bolt Size Inches	EDP No.	Qty. Per Box	Price Per 100
4	100	\$2.68	3/16	4294-28400	100	\$1.90
6	100	3.08	1/4	4294-28500	100	2.27
8	100	4.02	5/16	4294-28600	100	3.02
10	100	6.27	3/8	4294-28700	100	3.76
12	100	13.61	7/16	4294-28800	100	5.44
14	100	16.44	1/2	4294-28900	100	7.77
16	100	35.73	9/16	4294-29000	100	12.90
18	50	26.03	5/8	4294-29100	100	15.89
			3/4	4294-29200	50	24.90
			7/8	4294-29300	50	35.66
			1	4294-29400	50	54.70
			1-1/8	4294-29500	10	102.33
			1-1/4	4294-29600	10	128.62

STANDARD STEEL WROUGHT WASHERS—PLATED



U.S.S. Standard Sizes - Packed in 5-lb. boxes

EDP No.	Item	Bolt Size	Outside Dia.	Hole Size	Thick-ness	No. In 5-lb.	List Price Per Lb.
4294-04600	J8070-011B	3/16	9/16	1/4	3/64	1805	\$2.95
5444-47404	J8070-029B	1/4	3/4	5/16	1/16	745	2.13
4294-04700	J8070-030B	5/16	7/8	3/8	5/64	435	2.95
4294-04800	J8070-031B	3/8	1	7/16	5/64	335	2.95
4294-04900	J8070-032B	7/16	1-1/4	1/2	5/64	205	2.95
4294-05000	J8070-033B	1/2	1-3/8	9/16	7/64	130	2.95
5444-47704	J8070-034B	9/16	1-1/2	5/8	7/64	110	14.42
4294-05100	J8070-035B	5/8	1-3/4	11/16	9/64	65	2.95
4294-05200	J8070-036B	3/4	2	13/16	5/32	45	2.95
4294-09600	J8070-037B	7/8	2-1/4	15/16	11/64	33	2.95
4295-09700	J8070-038B	1	2-1/2	1-1/16	11/64	29	2.95
4295-09800	J8070-039B	1-1/8	2-3/4	1-1/4	11/64	27	2.95
4295-09900	J8070-040B	1-1/4	3	1-3/8	11/64	19	2.95
5444-48064	J8070-041B	1-1/2	3-1/2	1-5/8	3/16	13	122.18

METRIC-PLATED STANDARD FLAT WASHERS



EDP No.	Item	Bolt Size Metric	Outside Dia.	Hole Size	Thick-ness	Per 100
6152-18574	2808-004	4 mm	9.0	4.3	0.8	\$1.01
6152-18604	2808-006	6 mm	12.5	6.4	1.6	1.66
6152-18634	2808-008	8 mm	17.0	8.4	1.6	3.09
6152-18664	2808-010	10 mm	21.0	10.5	2.0	4.89
6152-18694	2808-012	12 mm	24.0	13.0	2.5	8.74
6152-18724	2808-014	14 mm	28.0	15.0	2.5	13.66
6152-18754	2808-016	16 mm	30.0	17.0	3.0	18.37
6152-18764	2808-018	18 mm	34.0	19.0	3.0	22.82

S.A.E. FLAT WASHERS

Bolt Size In.	Outside Dia. In.	Inside Dia. In.	Birmingham In.
3/16	1/2	7/32	18 (3/64)
1/4	5/8	9/32	16 (1/16)
5/16	11/16	11/32	16 (1/16)
3/8	13/16	13/32	16 (1/16)
7/16	59/64	15/32	16 (1/16)
1/2	1-1/16	17/32	13 (3/32)
9/16	1-3/16	19/32	13 (3/32)
5/8	1-5/16	21/32	13 (3/32)
3/4	1-1/2	13/16	10 (9/64)
7/8	1-3/4	15/16	10 (9/64)
1	2	1-1/16	10 (9/64)



Plated

EDP No.	Bolt Size Inches	Qty Per Box	Sugg. List Price Per 100
4294-27400	#6	100	\$1.67
4294-27500	#8	100	1.54
6152-25884	#12	100	5.40
4294-27600	3/16, #10	100	1.65
4294-27700	1/4	100	2.78
4294-27800	5/16	100	3.80
4294-27800	3/8	100	4.76
4294-28000	7/16	100	7.73
4294-28800	1/2	100	9.49
4294-30700	5/8	100	10.34
4294-30800	3/4	50	11.80
6152-65864	7/8	50	35.11
6152-65874	1	50	40.72
5619-58019	1-1/8	1	45.20

John Day Company

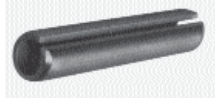
Midwest leading
Distributor of
Ag Supplies, Quality
Equipment, Industrial, MRO
and Safety Supplies

Three convenient locations:

Omaha, NE
Milan, IL
Redwood Falls, MN



EXPANPINS ZINC PLATED



A hollow expanding pin with an open groove extending the length of the pin. Many uses. Packed 10 pieces of each size in clear plastic display packages.

Size (in.) Dia. x Length	FDP No.	Per 100
1/16 x 1/2	7005-35405	\$8.33
x 5/8	7005-35705	8.46
x 3/4	7005-36005	8.58
x 7/8	7005-36305	8.74
x 1	7005-36605	8.87
5/64 x 1/2	7005-36905	8.37
x 1	7005-38105	8.97
3/32 x 1/2	7005-38405	8.49
x 5/8	7005-38705	8.61
x 3/4	7005-39005	8.78
x 7/8	7005-39305	8.97
x 1	7005-39605	9.34
x 1-1/4	7005-40205	9.50
x 1-1/2	7005-40805	9.84
1/8 x 1/2	7005-41105	8.58
x 5/8	7005-41405	8.80
x 3/4	7005-41705	9.06
x 7/8	7005-42005	9.31
x 1	7005-42305	9.69
x 1-1/8	7005-42605	10.07
x 1-1/4	7005-42905	10.41
x 1-3/8	7005-43205	10.73
x 1-1/2	7005-43505	11.04
x 1-3/4	7005-43805	11.77
x 2	7005-44105	12.47
5/32 x 5/8	7005-44405	9.62
x 3/4	7005-44705	9.97
x 7/8	7005-45005	10.36
x 1	7005-45305	10.70
x 1-1/8	7005-45605	11.01
x 1-1/4	7005-45905	11.33
x 1-1/2	7005-46505	12.09
x 1-3/4	7005-46805	12.88
x 2	7005-47105	14.01
x 2-1/2	7005-47405	15.14
3/16 x 3/4	7005-47705	10.51
x 7/8	7005-48005	10.94
x 1	7005-48305	11.61
x 1-1/8	7005-48605	11.99
x 1-1/4	7005-48905	12.43
x 1-3/8	7005-49205	12.97
x 1-1/2	7005-49505	13.48
x 1-5/8	7005-49805	14.01
x 1-3/4	7005-50105	14.64
x 1-7/8	7005-50405	15.21
x 2	7005-50705	15.84
x 2-1/4	7005-51005	16.67
x 2-1/2	7005-51305	17.54
7/32 x 3/4	7005-51905	11.52
x 1	7005-52505	12.50
x 1-1/4	7005-53105	13.76

Size (in.) Dia. x Length	FDP No.	Per 100
7/32 x 1-3/8	7005-53405	\$14.42
x 1-1/2	7005-53705	15.30
x 1-3/4	7005-54305	16.69
x 2	7005-54605	17.86
x 2-1/4	7005-54905	18.46
x 2-1/2	7005-55205	19.69
x 2-3/4	7005-55505	21.08
x 3	7005-55805	22.81
1/4 x 3/4	7005-56105	11.96
x 7/8	7005-56405	12.59
x 1	7005-56705	13.72
x 1-1/8	7005-57005	14.39
x 1-1/4	7005-57305	14.89
x 1-3/8	7005-57605	15.88
x 1-1/2	7005-57905	16.82
x 1-5/8	7005-58205	17.96
x 1-3/4	7005-58505	18.93
x 1-7/8	7005-58805	19.94
x 2	7005-59105	20.86
x 2-1/4	7005-59405	21.90
x 2-1/2	7005-59705	23.70
x 2-3/4	7005-60005	25.21
x 3	7005-60305	26.44
5/16 x 1	7005-60605	16.57
x 1-1/8	7005-60905	17.77
x 1-1/4	7005-61205	18.97
x 1-3/8	7005-61505	20.20
x 1-1/2	7005-61805	21.46
x 1-5/8	7005-62105	22.72
x 1-3/4	7005-62405	23.98
x 1-7/8	7005-62705	25.24
x 2	7005-63005	26.70
x 2-1/4	7005-63305	28.66
x 2-1/2	7005-63605	30.64
x 2-3/4	7005-63905	33.29
x 3	7005-64205	36.00
x 3-1/2	7005-64505	41.40
3/8 x 1	7005-64805	23.51
x 1-1/4	7005-65105	24.87
x 1-1/2	7005-65405	27.90
x 1-3/4	7005-65705	30.46
x 2	7005-66005	36.36
x 2-1/4	7005-66305	39.94
x 2-1/2	7005-66605	43.51
x 2-3/4	7005-66905	47.11
x 3	7005-67205	50.78
7/16 x 1-1/2	7005-67505	32.63
x 1-3/4	7005-67805	36.58
x 2	7005-68105	40.52
x 2-1/2	7005-68405	47.78
x 2-3/4	7005-68705	51.43
x 3	7005-69005	55.41
1/2 x 1-1/2	7005-69305	38.59
x 1-3/4	7005-69605	43.42
x 2	7005-69905	48.24
x 2-1/2	7005-70205	58.07
x 2-3/4	7005-70505	62.54
x 3	7005-70805	65.51

GRADE 5 "WHIZ" BOLTS AND NUTS



Coarse Thread -
Phosphate Finish

Coarse Thread -
Phosphate Finish

GRADE 5 WHIZ BOLTS

EDP No.	Item	Description	Std. Pkg.	Price Per 100
8325-70025	93410	1/4" x 7/8" NC Gr. 5 Whiz Bolt	50	\$38.41
6152-70125	--	1/4" x 1" NC Gr. 5 Whiz Bolt	50	19.50
8325-70225	93414	1/4" x 1-3/4" NC Gr. 5 Whiz Bolt	25	71.56
6152-70325	--	5/16" x 3/4" NC Gr. 5 Whiz Bolt	50	28.76
6152-70425	--	5/16" x 1" NC Gr. 5 Whiz Bolt	50	32.36
6152-70525	--	5/16" x 1-1/4" NC Gr. 5 Whiz Bolt	25	38.90
8325-70625	93418	5/16" x 1-1/2" NC Gr. 5 Whiz Bolt	25	74.53
6152-70725	--	3/8" x 3/4" NC Gr. 5 Whiz Bolt	50	38.32
6152-70825	--	3/8" x 1" NC Gr. 5 Whiz Bolt	25	49.41
6152-70925	--	3/8" x 1-1/4" NC Gr. 5 Whiz Bolt	25	54.88
6152-71025	--	3/8" x 1-1/2" NC Gr. 5 Whiz Bolt	25	49.99
8325-71125	93441	1/2" x 1-1/4" NC Gr. 5 Whiz Bolt	25	217.57

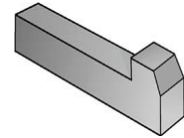
1/4" NC GRADE 5 WHIZ NUT

6152-71225	--	1/4" NC Gr. 5 Whiz Nut	100	5.78
6152-71325	--	5/16" NC Gr. 5 Whiz Nut	100	7.00
6152-71425	--	3/8" NC Gr. 5 Whiz Nut	100	13.23
6152-71525	--	1/2" NC Gr. 5 Whiz Nut	50	30.87

GIB HEAD MACHINERY KEYS

• Cold finished steel • 1/8" taper per foot

* Assortment includes all sizes



EDP No.	Description	Item	Qty. in Ass't.	Code	Each
3247-84347	1/4 x 1	GIB-0250-1000	*4	1170	\$4.32
3247-84547	1/4 x 1-1/2	GIB-0250-1500	*4	1180	4.57
3247-84747	1/4 x 2	GIB-0250-2000	*4	1202	5.14
3247-84947	1/4 x 2-1/2	GIB-0250-2500	*2	1215	5.44
3247-85147	1/4 x 3	GIB-0250-3000	*2	1221	4.64
3247-85347	5/16 x 1	GIB-0312-1000	*4	2184	4.66
3247-85547	5/16 x 1-1/2	GIB-0312-1500	*4	2203	5.14
3247-85747	5/16 x 2	GIB-0312-2000	*4	2227	5.77
3247-85947	5/16 x 2-1/2	GIB-0312-2500	*2	2233	5.90
3247-86147	5/16 x 3	GIB-0312-3000	*2	2245	6.19
3247-86347	3/8 x 1	GIB-0375-1000	*4	3186	3.92
3247-86547	3/8 x 1-1/2	GIB-0375-1500	*4	3203	5.14
3247-86747	3/8 x 2	GIB-0375-2000	*4	3231	5.86
3247-86947	3/8 x 2-1/2	GIB-0375-2500	*2	3247	6.27
3247-87147	3/8 x 3	GIB-0375-3000	*2	3269	6.81
3247-88447	[Gib Key Assortment]			310506	\$166.76



HOPE HAVEN CORN PICKER PIN ASSORTMENTS

No. 13006—Consists of 50 pieces in sizes from 1/4" x 1-1/4" to 3/8" x 2-1/4".



EDP No.	Item	Description	Net Price
3185-37183	13006	Clevis Pin Assortment	\$18.82

*Included in 13006 Assortment
Packed 25 in a box.

EDP No.	Size In.	Price Per 100	EDP No.	Size In.	Price Per 100
3247-00147	3/16 x 1	\$22.43	3247-02547	3/8 x 1-1/4	\$34.26
3247-00247	x 1-1/4	23.51	3247-02647	x 1-1/2	38.10
3247-00347	x 1-1/2	24.21	3247-02747*	x 1-3/4	41.09
3247-00447	x 2	25.80	3247-02847*	x 2	41.91
3247-00647	1/4 x 1	23.87	3247-02947*	x 2-1/4	45.76
3247-00747*	x 1-1/4	24.82	3247-03047	x 2-1/2	46.42
3247-00847*	x 1-1/2	25.99	3247-03147	x 2-3/4	52.18
3247-00947*	x 1-3/4	27.83	3247-03247	x 3	54.50
3247-01047*	x 2	27.93	3247-03547	7/16 x 1-1/2	45.34
3247-01147*	x 2-1/4	37.40	3247-03647	x 2	52.91
3247-01247*	x 2-1/2	37.62	3247-03747	x 2-1/2	54.82
3247-01347	x 2-3/4	37.66	3247-03847	x 2-3/4	64.63
3247-01447*	x 3	37.98	3247-03947	x 3	70.17
3247-01547	5/16 x 1	27.58	3247-04047	1/2 x 1	52.62
3247-01647	x 1-1/4	29.27	3247-04147	x 1-1/4	53.17
3247-01747*	x 1-1/2	31.18	3247-04247	x 1-1/2	57.08
3247-01847*	x 1-3/4	21.45	3247-04347	x 1-3/4	58.16
3247-01947*	x 2	34.99	3247-04447	x 2	62.44
3247-02047*	x 2-1/4	36.48	3247-04547	x 2-1/4	66.67
3247-02147*	x 2-1/2	38.58	3247-04647	x 2-1/2	68.13
3247-02247*	x 2-3/4	39.72	3247-04747	x 3	80.43
3247-02347*	5/16 x 3	41.76	3247-04847	x 3-1/2	83.00
3247-02447	3/8 x 1	32.26	3247-04947	x 4	97.27
			3247-05047	5/8 x 1-1/2	82.40
			3247-05147	x 2	96.29
			3247-05247	x 2-1/2	149.10
			3247-05347	x 3	173.51
			3247-05447	3/4 x 2	142.23
			3247-05547	x 2-1/2	163.21
			3247-05647	x 3	330.49

WIRE TERMINAL & CONNECTOR ASST.

22-16 butt conn.	20
16-14 butt conn.	15
12-10 butt conn.	10
16-14 ring, #10 stud	15
12-10 ring, #10 stud	10
12-10 ring, 1/4 stud	10
22-16 spade, #10 stud	20
16-14 spade, #10 stud	15
12-10 spade, #10 stud	10
16-14 tab, male	10
16-14 tab, female	10
16-14 tap, splice	5
TOTAL	150 Pcs.



EDP No.	Item	Description	Net Price
3185-37983	12020	Terminal Assortment	\$15.74

"E" CLIP RETAINING RINGS



SIZE (SHAFT DIA.)

EDP NO.	ITEM	FRAC.	DEC.	STD. PKG.	CODE	PRICE EACH
3185-42509	E-12	1/8	.125	25	104	\$.08
3185-42809	E-18	3/16	.180	25	104	.08
3185-53385	EX-21	7/32	.219	25	105	.09
3185-43109	E-25	1/4	.250	25	105	.09
3185-53485	EX-31	5/16	.313	25	105	.09
3185-43409	E-37	3/8	.375	25	106	.11
3185-53585	E-43	7/16	.438	25	106	.11
3185-43709	E-50	1/2	.500	25	108	.12
3185-44009	E-62	5/8	.625	10	108	.16
3185-44309	E-75	3/4	.750	10	109	.20
3185-44609	E-87	7/8	.875	10	112	.29
3185-53685	EX-98	1"	1.000	10	113	.28

E-CLIP ASSORTMENT

High quality carbon spring steel. 12 sizes, 300 pieces

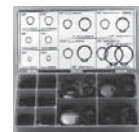
EDP NO.	ITEM	DESCRIPTION	DLR. NET EA.
3185-37083	13031	"E" Clip Assortment	\$24.59

EXTERNAL SNAP RING ASSORTMENT

EDP NO.	SIZE	ITEM	STD. PKG.	CODE	PRICE EACH (PER RING)
3185-49109	1/4	5100-25	25	105	\$.10
3185-49409	5/16	5100-31	25	105	.11
3185-49709	3/8	5100-37	25	105	.11
3185-50009	7/16	5100-43	25	105	.11
3185-50309	1/2	5100-50	25	106	.14
3185-50609	9/16	5100-56	25	106	.12
3185-50909	5/8	5100-62	25	106	.13
3185-51209	3/4	5100-75	25	108	.14
3185-51509	13/16	5100-81	25	108	.16
3185-51809	7/8	5100-87	25	109	.17
3185-52109	1	5100-100	10	111	.48
3185-52409	1-1/4	5100-125	10	114	.30
3185-53085	1-3/8	5100-137	10	117	.32
3185-53185	1-7/16	5100-143	10	117	.33
3185-53285	1-1/2	5100-150	10	120	.48

ASSORTMENT

EDP NO.	ITEM	DESCRIPTION	DLR. NET
3185-37283	13041	Snap Ring Assst. 15 sizes, 300 pcs.	\$26.09



KEYSTOCK

Furnished in 1-foot lengths.

EDP NO.	Round	Per Ft.	EDP NO.	Square	Per Ft.
3247-42647	1/8	\$.73	3247-39447	1/8 x 1/8	\$1.01
3247-43847	3/16	1.02	3247-40447	3/16 x 3/16	1.35
3247-44047	1/4	1.40	3247-40647	1/4 x 1/4	1.72
3247-44247	5/16	1.57	3247-40847	5/16 x 5/16	2.50
3247-44447	3/8	2.35	3247-41047	3/8 x 3/8	3.14
3247-44647	7/16	2.86	3247-41247	7/16 x 7/16	4.65
3247-44847	1/2	3.59	3247-41447	1/2 x 1/2	5.72
EDP No.	Rectangular	Per Ft.	EDP No.	Step Metric	Per Ft.
3247-37847	1/4 x 3/16	\$2.09	3247-80947	3/16 x 1/8	\$19.96
3247-38247	5/16 x 1/4	2.54	3247-81947	3/8 x 1/2	21.96
3247-38647	3/8 x 1/4	2.91	3247-82147	1/2 x 5/8	28.51
3247-39247	3/8 x 5/16	3.62	3247-81147	3/16 x 1/4	15.22
3247-41847	5/8 x 5/8	9.27	3247-83147	1/4 x 5/16	14.92
6247-42047	3/4 x 3/4	12.11	3247-81547	1/4 x 3/8	16.24
3247-42447	1 x 1	19.56	3247-81747	3/8 x 5/16	18.91
3247-39647	1/2 x 5/8	11.60	EDP No.	Metric	Per Ft.
3247-37647	1/4 x 1/8	1.80	3247-83347	10mm x 12	\$6.79
3247-36847	1/8 x 3/8	2.42	3247-83547	12mm x 12	7.81
3247-38447	3/8 x 3/16	2.80	3247-82347	4mm x 12	2.04
3247-39047	3/8 x 3/4	8.29	3247-82547	5mm x 12	2.47
3247-39347	1/2 x 3/8	5.52	3247-82747	6mm x 12	3.30
			3247-82947	7mm x 12	4.14
			3247-83147	8mm x 12	6.27



MAK-A-KEY MACHINE KEY STOCK

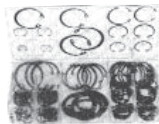
Size marked on each bar—just cut, file and fit. Cold-finished, zinc-coated



Size	Bars per Bundle	Weight per Bundle
1/8" sq.	5	.265 lbs.
3/16" sq.	5	.60 lbs.
1/4" sq.	5	1.06 lbs.
5/16" sq.	5	1.66 lbs.
3/8" sq.	5	2.39 lbs.
7/16" sq.	3	2.00 lbs.
1/2" sq.	3	2.50 lbs.
Total:	31	10.475 lbs.

EDP No.	Description	Net Price
3247-10447	Keystock Assortment	\$66.07

INTERNAL HOUSING RINGS



EDP NO.	SIZE	ITEM	STD. PKG.	CODE	EACH
3185-44909	1/2	N1300-50	25	105	\$.14
3185-45209	5/8	N1300-62	25	105	.13
3185-45509	11/16	N1300-68	25	106	.13
3185-45809	3/4	N1300-75	25	106	.14
3185-46109	13/16	N1300-81	25	108	.14
3185-46409	7/8	N1300-87	25	108	.16
3185-46709	1	N1300-100	10	109	.22
3185-47009	1-1/16	N1300-106	10	109	.27
3185-47309	1-1/8	N1300-112	10	112	.28
3185-47609	1-1/4	N1300-125	10	112	.28
3185-47909	1-3/8	N1300-137	10	114	.29
3185-48209	1-1/2	N1300-150	10	117	.31
3185-48509	1-5/8	N1300-162	10	120	.38
3185-48809	1-3/4	N1300-175	10	123	.41

ASSORTMENT

EDP No.	Item	Description	Net Price
3185-37383	13045	Housing Ring Asst. 74 Sizes, 150 pcs.	\$24.40

ARMSTRONG SNAP RING PLIER SET



Set Consists of:

Pliers	Angle Tips	Straight Tips
1 Internal	2 pr. 90° x .038 dia.	2 pr. .047 dia.
1 External	2 pr. 45° x .047 dia.	2 pr. .070 dia.

EDP No.	Item	Each
1317-37237	68-065 Plier Set	\$63.51

SELF-SPREADING STEEL COTTER PINS



EDP NO.	SIZE IN.	PRICE PER 100	EDP NO.	SIZE IN.	PRICE PER 100
7005-20105	1/16 x 1/2	\$2.27	7005-26405	5/32 x 1-1/4	\$6.49
7005-20405	x 3/4	2.51	7005-26705	x 1-1/2	7.16
7005-20705	x 1	2.82	7005-83705	5/32 x 1-3/4	8.00
7005-21005	x 1-1/4	3.14	7005-27005	x 2	8.71
7005-21305	x 1-1/2	5.01	7005-27305	x 2-1/2	8.99
7005-21605	x 2	2.76	7005-27605	3/16 x 1	7.20
7005-21905	3/32 x 1/2	2.70	7005-27905	x 1-1/2	9.23
7005-22205	x 3/4	3.10	7005-28205	x 2	18.98
7005-22505	x 1	3.34	7005-28505	x 2-1/2	13.40
7005-22805	x 1-1/4	3.86	7005-28805	x 3	15.11
7005-23105	x 1-1/2	4.26	7005-78305	1/4 x 1-1/2	13.92
7005-23405	x 2	4.98	7005-29105	x 2	17.27
7005-23705	7/64 x 1	4.02	7005-29405	x 2-1/2	20.64
7005-76805	1/8 x 3/4	3.46	7005-29705*	x 3	24.10
7005-24005	x 1	4.02	7005-80105*	5/16 x 2-1/2	29.76
7005-24305	x 1-1/4	4.53	7005-30005*	x 3	34.44
7005-24905	x 1-3/4	5.61	7005-80405*	x 3-1/2	39.07
7005-25205	x 2	6.17	7005-30305*	x 4	43.80
7005-25505	x 2-1/2	7.24	7005-30605*	3/8 x 3	50.68
7005-25805	x 3	8.31	7005-30905*	x 4	63.04
7005-26105	5/32 x 1	5.57			

NO. 50 AG COTTER PIN ASSORTMENT IN CLEAR VIEW PLASTIC BOX

Contains 50 cadmium plated cotter pins with diameter of 3/32", 1/8", 5/32", 3/16", 1/4" and 5/16" of various lengths.



EDP No.	Item	Description	Each
7005-31805	50-AG	Cotter Pin Assortment	\$5.19

NO. 38 IDEAL COTTER PIN ASSORTMENT

Contains 100 pins in the following sizes:



(16)	1/16x1/2	(4)	3/32x1-1/4
(16)	1/16x3/4	(4)	1/8x1
(10)	1/16x1	(1)	1/8x1-1/4
(15)	3/32x1/2	(1)	1/8x1-1/2
(15)	3/32x3/4	(1)	5/32x1
(16)	3/32x1	(1)	5/32x1-1/2

EDP No.	Item	Description	Each
7005-31205	38	Cotter Pin Assortment	\$2.33

NO. 100 AG COTTER PIN ASSORTMENT

Contains 100 pins in the following sizes:

(10)	3/32x3/4	(10)	3/16x1
(10)	3/32x1	(10)	3/16x1-1/2
(4)	3/32x1-1/2	(8)	3/16x2
(10)	1/8x1	(6)	1/4x1-1/2
(10)	1/8x1-1/4	(6)	1/4x2
(8)	1/8x1-1/2	(2)	5/16x2
(4)	5/32x1-1/2	(2)	5/16x2-1/2



EDP No.	Item	Description	Each
7005-32405	100-AG	Cotter Pin Assortment	\$8.39



LONG & SHORT ARM SOCKET SCREW KEYS

SHORT ARM			LONG ARM			METRIC LONG ARM				
EDP NO.	ARM	EACH	EDP NO.	ARM	EACH	SIZE	EDP NO.	LONG ARM	SIZE	EACH
1317-21058	57002	\$48.00	--	1317-26758	\$ --	.028	1317-32558	58050	1.5MM	\$58.00
1317-20358	57004	44.00	58007	1317-27958	60.00	.035	1317-32758	58052	2MM	60.00
1317-20558	57006	29.00	58003	1317-27158	40.00	.050	1317-32958	58054	2.5MM	71.00
1317-20758	57008	29.00	58001	1317-26758	37.00	1/16	1317-33158	58056	3MM	89.00
1317-20958	57010	29.00	58002	1317-26958	50.00	5/64	1317-33358	58058	4MM	100.00
1317-21158	57012	29.00	58004	1317-27358	50.00	3/32	1317-33558	58060	5MM	127.00
1317-21358	57013	31.00	58005	1317-27558	50.00	7/64	1317-33758	58062	6MM	194.00
1317-21558	57014	31.00	58006	1317-27758	50.00	1/8	1317-33958	58064	8MM	308.00
1317-21758	57018	40.00	58010	1317-28158	50.00	9/64	1317-34158	58066	10MM	534.00
1317-21958	57020	44.00	58012	1317-28358	60.00	5/32	1317-34358	58068	12MM	1026.00
1317-22158	57022	56.00	58014	1317-28558	79.00	3/16	1317-34758	58092	17MM	2283.00
1317-22358	57024	79.00	58016	1317-28758	123.00	7/32				
1317-22558	57026	102.00	58018	1317-28958	173.00	1/4				
1317-22758	57028	173.00	58020	1317-29158	279.00	5/16				
1317-22958	57030	273.00	58022	1317-29358	416.00	3/8				
1317-23158	57031	563.00	58023	1317-29558	847.00	7/16				
1317-23358	57032	683.00	58024	1317-29758	973.00	1/2				
1317-23558	57034	976.00	58026	1317-29958	1316.00	9/16				
1317-23758	57036	1316.00	58028	1317-30158	2138.00	5/8				
1317-23958	57038	2030.00	58030	1317-30358	3038.00	3/4				
1317-24158	57040	3340.00	58032	1317-30558	4563.00	7/8				
1317-24358	57042	4608.00	58034	1317-30758	6122.00	1				

AGRICULTURAL U-BOLTS ASSORTMENT

- Assortment contains 4 of each number shown below.
- Zinc-Plated U-Bolts and Nuts.
- Carded Merchandise.
- U-Bolts and Nuts made from Grade 5 material.



EDP No.	Item	Description	Net Price
7398-90198	311	Ag. Imp. U-Bolt Assmt. contains 4 each of 14 popular square U-bolt sizes	\$351.13

INDIVIDUAL U-BOLTS

EDP NO.	ITEM NO.	DESCRIPTION	EACH
7398-90298	S1010Z	3/8 X 2-1/2 X 2-1/2 Square U-Bolt	\$6.04
7398-90200	S1020Z	3/8 x 7 x 7 Square U-Bolt	7.28
7398-90398	S1030Z	1/2 x 3 x 4 Square U-Bolt	5.39
7398-91098	S1040Z	5/8 x 4 x 4 Square U-Bolt	8.27
7398-90498	S1050Z	5/8 x 4 x 5-1/2 Square U-Bolt	8.92
7398-22960	S1060Z	5/8 x 4 x 7-1/2 Square U-Bolt	10.13
7398-90598	S1070Z	5/8 x 5 x 8-1/2 Square Bolt	11.51
7398-00300	S1080Z	5/8 x 6 x 8 Square U-Bolt	11.47
7398-00400	S1090Z	5/8 x 7 x 5 Square U-Bolt	10.40
7398-01100	S1100Z	5/8 x 7 x 7 Square U-Bolt	11.39
7398-90698	S1110Z	5/8 x 7 x 8-1/2 Square U-Bolt	11.84
7398-90798	S1120Z	3/4 x 5 x 7 Square U-Bolt	14.51
7398-90898	S1130Z	3/4 x 7 x 8-1/2 Square U-Bolt	15.70
7398-90998	S1140Z	3/4 x 7 x 7 Square U-Bolt	15.37

THE EXECUTIVE POCKET CHUM

A Stainless Steel Pocket Slide Caliper

A full 3-1/2" ruler for ordinary measuring, graduated in 64ths etched at the upper straight edge.

Caliper jaws open to measure to 2-7/8" and has depth capacity of 3/4".



EDP No.	Item	Each
5572-90172	1045	\$16.30

POCKET SIZE FOLD-UP SETS



EDP No.	Item	Sizes	Keys	Pack	Each
2408-00700	10213	LOng Frac. Hex Key	13	-	\$12.28
2408-01300	20811	.050 thru 5/32 inclusive	8	10	4.66
2408-0011	20911	5/64 thru 1/4 inclusive	9	10	7.18
2408-00300	20511	3/16 thru 3/8 inclusive	5	5	10.12
1356-43356	98045	6-in-1 screwdriver/AWL		10	9.16
2408-00600	21171	1/5mm thru 6mm inclusive	7	10	5.86
2408-01100	21167	4mm thru 10mm inclusive	5	5	10.76
2408-01200	22591	Large Torx	7	-	13.96
2408-001800	10509	Short Metric Hex	9	-	9.40

T-HANDLE HEX KEY WRENCHES

To determine the correct size "T" handle hex key wrench for each size socket screw, see key size across the flat column on long and short area socket screw keys

EDP No.	Item	Size	Std. Pkg.	Each
2408-01800	31606	3/32" x 6"	10	\$1.64
2408-01600	31608	1/8" x 6"	10	1.71
2408-01900	31610	5/32" x 6"	10	2.07
2408-01700	31612	3/16" x 6"	10	2.53
2408-01500	31620	15/16" x 6"	10	6.91
2408-00900	84415	3/8" x 6"	10	8.53
2408-00500	31916	1/4" x 9"	10	4.36





CHESCO HEX-L KEY SET



EDP No.	Item	Description	Each
2408-01400	69207	7 Key Short Arm Hex Key Set in plastic pouch. Sizes: 5/64, 3/32, 1/8, 5/32, 3/16, 7/32, 1/4	\$6.50
2408-00700	10213	13 Key Long Arm Hex Key Set in plastic holder. Sizes: .050, 1/16, 5/64, 3/32, 7/64, 1/8, 9/64, 5/32, 3/16, 7/32, 1/4, 5/16, 3/8	12.28
2408-00800	10509	9 Key Short Arm Metric Hex Key Set in plastic holder. Sizes: 1.5mm, 2mm, 2.5mm, 3mm, 4mm, 5mm, 6mm, 8mm, 10mm	9.40

CHESCO FOLD-UP TORX KEY SET

7 keys fit new-type fasteners
(Use at work position or at any angle)
A basic tool for an increasing number of maintenance and repair applications
Professional quality - Handy to use!



EDP NO.	ITEM	DESCRIPTION	EACH
2408-01200	22571	Torx Key Set	\$13.96

BONDHUS BALLDRIVER HEX TOOL SETS

- Screws can be tightened or loosened at angles up to 25°.
- Works in hard to reach areas when ordinary hex wrenches simply can't.
- Faster insertion and removal. Full 360° turning.
- Available in inch and metric dimension.

Item	Old No.	No. Wrenches	Sizes
10932	BLX 8	8	.050"-5/32"
10936	BLX 12	12	.050"-5/16"
10937	BLX 13	13	.050"-3/8"
10938	BLX 10	10	1/16"-1/4"
10999	BLX 9MM	9	1.5mm-10mm

EDP No.	Item	Old Part No.	Price
1585-36485	10932	BLX 8	\$10.02
1585-37385	10938	BLX10	13.88
1585-37085	10937	BLX 13	22.22
1585-36785	10936	BLX 12	17.31

SOCKET SET SCREW ASST.

200 Piece Socket Set Screw Assortment

Quantity of sizes in contents:

Fine Thread	Coarse Thread
(20) 1/4 x 1/4	(10) 5/32 x 3/16
(10) 3/8 x 3/8	(30) 5/16 x 3/8
(20) 5/16 x 3/8	(10) 3/8 x 3/8
	(20) 5/16 x 1/2
	(10) 1/8 x 3/16
	(10) 3/16 x 1/4
	(30) 1/4 x 1/4
	(10) 3/8 x 1/2
	(20) 1/4 x 3/8



EDP No.	Item	Each
3185-37683	13060	\$31.26

SHORT ARM SETS - IN METAL BOX - METRIC

EDP No.	Item No.	No. Of Keys	Key Sizes mm	Net
1317-31558	56038	12	0.7,0.9,1.3,1.5,2.2,5.3,4,6,7,10	\$37.08

LONG ARM SET - IN METAL BOX - METRIC

1317-31758	56085	10	1.5,2.2,5.3,4,5,6,8,10,12	20.87
------------	-------	----	---------------------------	-------

LONG FOLD-UPS

1317-88330	56318 Carded	9	5/64,3/32,7/64,1/8,9/64, 5/32,3/16,7/32,1/4 Handle Length 6-3/8"	7.90
------------	-----------------	---	--	------

STANDARD FOLD-UPS

1317-31959	56321 Carded	9	.050,1/16,5/64,3/32,7/64, 1/8,9/64,5/32,3/16 Handle Length 3-3/8"	5.12
------------	-----------------	---	---	------

John Day Company

Midwest leading
Distributor of
Call Agricultural Sales
Ag Supplies, Quality
Equipment, Industrial, MRO
and Safety Supplies
800-767-2273

Three convenient locations:

Omaha, NE
Milan, IL
Redwood Falls, MN



RESALE ASSORTMENTS FOR YOUR CUSTOMERS

To reduce your handling costs on the sale of small ticket items, we have prepackaged the most popular sizes of the most asked for items for resale to your customers.



EDP No.	Item	Hairpin Clip Assortment	Each
3185-37583	17065	56 pieces, 7 sizes 1/4" to 3/4"	\$3.18



EDP No.	Item	Cotter Pin Assortment	Each
3185-37883	12010	420 pieces, 6 sizes 1/16"x 1" to 3/16" x 2"	16.41



EDP No.	Item	Machinery Key Assortment	Each
3185-38083	17082	8 pieces, 1-1/2" long, 5 sizes 1/8", 3/16", 1/4", 5/16", 3/8"	4.39



EDP No.	Item	Expanpin Spring Pin Asst.	Each
3185-37783	12100	125 pieces, 6 sizes, 1/8" x 1" to 3/8 x 2"	17.85



EDP No.	Item	Hitch Pin Clip Asst.	Each
7005-33005	HPC-15	15-Pc. Hitch Pin Clip Asst.	\$4.56

WOODRUFF KEYS

These Woodruff Keys are made from selected cold drawn stock in accordance with standards approved by the American Standards Association. They are made to accurate tolerances to insure fast, efficient assembly.

EDP No.	No.	Size	Per 100	EDP No.	No.	Size	Per 100
1507-51307	213*	3/8x1/8	\$39.03	3247-07947	16	1-1/8x3/16	\$109.21
3247-06447	1*	1/2x1/16	66.06	3247-08047	17	1-1/8x7/32	120.74
3247-06547	2*	1/2x3/32	66.06	3247-08147	18	1-1/8x1/4	129.00
3247-06647	3*	1/2x1/8	66.80	3247-05947	C	1-1/8x5/16	149.99
3247-06747	4*	5/8x3/32	66.32	3247-08247	19	1-1/4x3/16	132.22
3247-06847	5*	5/8x1/8	67.97	3247-08347	20	1-1/4x7/32	143.70
3247-06947	6*	5/8x5/32	67.38	3247-08447	21	1-1/4x1/4	150.41
3247-09347	61*	5/8x3/16	70.23	3247-06047	D	1-1/4x5/16	190.82
3247-07047	7*	3/4x1/8	68.49	3247-06147	E	1-1/4x3/8	219.01
3247-07147	8*	3/4x5/32	71.51	3247-08547	22	1-3/8x1/4	183.26
3247-07247	9*	3/4x3/16	70.92	3247-08647	23	1-3/8x5/16	206.11
3247-09447	91*	3/4x1/4	81.34	3247-06247	F	1-3/8x3/8	243.29
3247-07347	10*	7/8x5/32	77.59	3247-08747	24	1-1/2x1/4	189.44
3247-07447	11*	7/8x3/16	81.40	3247-08847	25	1-1/2x5/16	232.50
3247-07547	12*	7/8x7/32	88.74	3247-06347	G	1-1/2x3/8	271.63
3247-05747	A*	7/8x1/4	92.82	3247-09547	126	2-1/8x3/16	115.19
3247-09947	141	15/16x1/4	117.83	3247-09647	127	2-1/8x1/4	130.84
3247-07647	13	1x3/16	94.41	3247-09747	128	2-1/8x5/16	206.27
3247-07747	14	1x7/32	97.58	3247-09847	129	2-1/8x3/8	218.43
3247-07847	15	1x1/4	105.41	3247-08947	26	2-1/8x3/16	143.70
3247-05847	B	1x5/16	125.13	3247-09047	27	2-1/8x1/4	172.42
3247-10047	152	1x3/8	153.11	3247-09147	28	2-1/8x5/16	218.43
				3247-09247	29	2-1/8x3/8	258.68

Note: Size listed is not actual size of key. Size listed is size of barstock the key is made from.

EDP No.	No.	Description	Each
3185-36983	13110	Woodruff Key Assortment	\$38.48

* Items with * are contained in 13110 Assortment.

ROUND HEAD MACHINE SCREW ASST.

Packed in a clear one-plastic box with molded partitions. Easy to read decal lists contents according to location in box.



280 Pieces

EDP No.	Item	Each
3185-37483	12215	\$23.28

- Screws:
- (25) 6-32 x 1/2
 - (25) 6-32 x 1
 - (25) 8-32 x 2
 - (25) 8-32 x 1
 - (20) 10-24 x 3/4
 - (20) 10-24 x 1/2

SOCKET SET SCREWS



- Heat-Treated • Alloy Steel • Cup Point
- Packaged in boxes of 100 • Priced per 100

EDP No.	Item	Size (in.) Dia. x Length	Per 100
1469-24919	101111	5-14 (1/8) x 3/16 NC	\$6.89
1469-25769	101195	8-32 x 3/16 NC	6.66
1469-25819	101197	8-32 x 1/4 NC	6.72
1469-26219	101250	10-24 (3/16) x 1/4 NC	7.16
1469-26269	101253	10-24 (3/16) x 5/16 NC	7.27
1469-26319	101255	10-24 (3/16) x 3/8 NC	7.47
1469-26369	101259	10-24 (3/16) x 1/2 NC	7.80
1469-27119	101309	1/4-20 (1/4) x 1/4 NC	7.23
1469-27169	101311	1/4-20 (1/4) x 5/16 NC	7.30
1469-27219	101313	1/4-20 (1/4) x 3/8 NC	7.50
1469-27269	101317	1/4-20 (1/4) x 1/2 NC	7.83
1469-27369	101321	1/4-20 (1/4) x 3/4 NC	11.66
1469-27419	101325	1/4-20 (1/4) x 1 NC	16.41
1469-27469	101327	1/4-20 (1/4) x 1-1/4 NC	22.09
1469-28069	101381	5/16-18 (5/16) x 5/16 NC	9.66
1469-28119	101383	5/16-18 (5/16) x 3/8 NC	9.87
1469-28169	101387	5/16-18 (5/16) x 1/2 NC	10.74
1469-28269	101391	5/16-18 (5/16) x 3/4 NC	15.57
1469-28369	101395	5/16-18 (5/16) x 1 NC	21.11
1469-28969	101449	3/8-16 (3/8) x 3/8 NC	11.31
1469-29019	101453	3/8-16 (3/8) x 1/2 NC	13.28
1469-29119	101457	3/8-16 (3/8) x 3/4 NC	18.03
1469-29169	101461	3/8-16 (3/8) x 1 NC	30.00
1469-29819	101517	7/16-14 (7/16) x 3/8 NC	30.23
1469-29869	101521	7/16-14 (7/16) x 1/2 NC	28.94
1469-29969	101529	7/16-1 (7/16) x 1 NC	44.72
1469-30319	101567	1/2-13 (1/2) x 1/2 NC	29.46
1469-30419	101571	1/2-13 (1/2) x 3/4 NC	35.67
1469-30469	101575	1/2-13 (1/2) x 1 NC	59.21
1469-30519	101577	1/2-13 (1/2) x 1-1/4 NC	54.86
1469-26719	101273	10-32 (3/16) x 1/4 NF	7.16
1469-26769	101275	10-32 (3/16) x 5/16 NF	7.27
1469-26819	101277	10-32 (3/16) x 3/8 NF	7.47
1469-26869	101281	10-32 (3/16) x 1/2 NF	7.80
1469-27669	101337	1/4-28 (1/4) x 1/4 NF	7.23
1469-27719	101341	1/4-28 (1/4) x 3/8 NF	7.50
1469-27769	101345	1/4-28 (1/4) x 1/2 NF	7.83
1469-28569	101407	5/16-24 (5/16) x 5/16 NF	10.13
1469-28619	101409	5/16-24 (5/16) x 3/8 NF	10.37
1469-28669	101413	5/16-24 (5/16) x 1/2 NF	11.28
1469-28719	101417	5/16-24 (5/16) x 3/4 NF	16.34
1469-28769	101419	5/16-24 (5/16) x 1 NF	22.40
1469-29519	101477	3/8-24 (3/8) x 3/8 NF	12.67
1469-29569	101481	3/8-24 (3/8) x 1/2 NF	33.13



**THREADED ROD COUPLING
NUT—PLATED**



EDP No.	Item	Size	Per 100
6357-06800	TSA NUT025NCCZ	1/4"	\$77.00
6357-06900	TSA NUT031NCCZ	5/16"	119.00
6357-07000	TSA NUT037NCCZ	3/8"	142.00
6357-07100	TSA NUT043NCCZ	7/16"	157.00
6357-07200	TSA NUT050NCCZ	1/2"	153.00
6357-07300	TSA NUT062NCCZ	5/8"	280.00
6357-07400	TSA NUT075NCCZ	3/4"	349.00
6357-07500	TSA NUT087NCCZ	7/8"	617.00
6357-07600	TSA NUT100NCCZ	1"	808.00

**N.C. (COARSE) STANDARD
THREADED ROD - Grade 2**

3-FOOT

NC EDP No.	NF EDP No.	Diameter In.	No. In Bundle	NC Price	NF Price
6357-06100	--	3/16"	5	\$2.01	--
6357-00800	6357-00900	1/4"	5*	1.96	\$2.14
6357-01500	6357-01600	5/16"	5*	2.44	2.57
6357-02100	6357-02200	3/8"	5*	3.30	3.39
6357-02700	6357-02800	7/16"	5*	4.42	4.56
6357-03200	6357-03300	1/2"	5*	5.14	5.71
6357-03700	6357-04100	5/8"	3*	7.40	9.13
6357-04700	6357-04800	3/4"	3*	12.54	12.56
6357-05300	6357-05200	7/8"	3	17.36	29.59
6357-05700	6357-05800	1"	3	22.56	22.58
6357-06200	6357-06300	1-1/8"	3	36.02	40.03
6357-06400	6357-06500	1-1/4"	3	43.56	48.40
6357-06600	--	1-3/8"	3		58.38

6-FOOT

NC EDP No.	Item	Diameter In.	No. In Bundle	Rod Price
6357-01100	35094-5	1/4"	5	\$3.77
6357-01800	35114-0	5/16"	5	4.90
6357-02400	35134-8	3/8"	5	6.93
6357-02900	35154-6	7/16"	5	8.39
6357-03500	35174-4	1/2"	5	10.92
6357-04300	35214-7	5/8"	3	16.94
6357-05000	35234-5	3/4"	3	25.60
6357-05500	35254-3	7/8"	3	32.14
6357-06000	35274-1	1"	3	45.18

B-7 THREADED ROD N.C. THREAD

B-7 threaded rod is an alloy grade of steel with specifications between Grade 5 and Grade 8. It is used for applications where standard low carbon Grade 2 threaded rod is not adequate.

3-FOOT

NC EDP No.	NF EDP No.	Diameter Inch	NC Price	NF Price
6357-00600	6357-00700	1/4"	\$4.90	\$6.24
6357-01300	6357-01400	5/16"	6.39	8.16
6357-01900	6357-02000	3/8"	7.64	9.72
6357-02600	--	7/16"	10.42	--
6357-03000	6357-03100	1/2"	11.11	14.17
6357-03800	6357-03900	5/8"	12.73	16.23
6357-04500	6357-04600	3/4"	17.66	22.56
6357-05100	6357-05200	7/8"	23.18	29.59
6357-05600	--	1"	29.82	--

6-FOOT

NC EDP No.	Diameter Inch	NC Price
6357-01000	1/4"	\$10.47
6357-01700	5/16"	12.04
6357-02300	3/8"	14.56
6357-03400	1/2"	22.20
6357-04200	5/8"	25.56
6357-04900	3/4"	35.39
6357-05400	7/8"	44.31
6357-05900	1"	56.99

12-FOOT

NC EDP No.	Diameter Inch	NC Price
6357-01200	1/4"	\$7.37
6357-02500	3/8"	12.73
6357-03600	1/2"	19.47
6357-04400	5/8"	30.67

**Your Midwest
Distributor
since 1909.**