



## Chain Light Duty

### "S" Hooks, Zinc Plated



- Low carbon cold drawn steel wire
- Supplied with blunt ends and electro galvanized finish
- "S" Hooks are manufactured to specifications

EDP#	Item Code	Description	Wire Dia.	Overall Length	Price
1849-42049	CHIC 06108-7	S1A ZINC PLTD S HOOK	.105	1"	\$0.20
1849-42349	CHIC 06111-7	S2 ZINC PLTD S HOOK	.117	1 1/4"	\$0.23
1849-42649	CHIC 06114-8	S2A ZINC PLTD S HOOK	.148	1 1/2"	\$0.27
1849-42949	CHIC 06117-9	S3 ZINC PLTD S HOOK	.186	1 3/4"	\$0.39
1849-43249	CHIC 06120-9	S4 ZINC PLTD S HOOK	.220	2 1/8"	\$0.51
1849-43549	CHIC 06123-0	S5 ZINC PLTD S HOOK	.250	2 1/2"	\$0.68
1849-43849	CHIC 06126-1	S6 ZINC PLTD S HOOK	.312	3"	\$0.94
1849-44149	CHIC 06129-2	S7 ZINC PLTD S HOOK	.375	3 1/2"	0.23 \$1.75

## Chain Fittings & Accessories

### Links - Crosby

#### Missing Link® Replacement Links - Series-335



- Forged steel - quenched and tempered
- Integral rivets join the two halves
- After making connections, rivets must be peened
- Meets or exceeds the performance requirements of Federal Specifications RRC-271D, Type II, except for those provisions required of the contractor
- Not suitable for use with Grade 8 chain or chain slings used in overhead lifting
- Galvanized (GALV) or Self Colored (SC) available

EDP#	Item Code	Description	WLL	Wt. per 100 Lbs.	Price
1953-43153	CROSBY 10-13110	G335 1/4" GALV MISSING LINK	1325	6.25	\$8.40
1953-43353	CROSBY 10-13138	G335 5/16 GALV MISSING LINK	1950	12.50	\$9.01
1953-43553	CROSBY 10-13156	G335 3/8" GALV MISSING LINK	2750	20.00	\$9.36
1953-43753	CROSBY 10-13192	G335 1/2" GALV MISSING LINK	4750	37.50	\$12.88
1953-43953	CROSBY 10-13236	G335 5/8" GALV MISSING LINK	7250	72.50	\$18.27
1953-44153	CROSBY 10-13254	G335 3/4" GALV MISSING LINK	10,250	122.50	\$28.91

**Call Agricultural Sales  
at  
800-767-2273**

## Quick Links



- Application: Use as a repair link, connecting link, or attaching device
- Tightens with fingers, no tools required
- Can be used repeatedly
- Description: Zinc plated, not heat treated
- Use only with chain of equal or lower working load limit
- Not to be used for load tie-down or lifting
- Standard package: 3/16 - 5/16 (20)  
3/8" - 1/2" (10)

EDP#	Item Code	Description	Inside Wdth. In.	Inside Lgth. In.	WLL	Price
1891-64191	COLMCK 82008	3/16" PLTD QUICK LINK	1/2	1 1/2	615	\$1.82
1891-64591	COLMCK 82108	1/4" PLTD QUICK LINK	9/16	1 3/4	880	\$2.14
1891-64991	COLMCK 82208	5/16" PLTD QUICK LINK	11/16	2 5/16	1,540	\$3.48
1891-65391	COLMCK 82308	3/8" PLATED QUICK LINK	3/4	2 7/16	1,980	\$4.56
1891-65791	COLMCK 82508	1/2" PLATED QUICK LINK	15/16	3 3/16	3,300	\$7.91

## Hope Haven Double Clevis Link



- Use with Grade 30, 43 and 70 chain

EDP#	Item Code	Description	Chain Size In.	WLL	Price
3185-58665	HOPE 24095	1/4" OR 5/16" MID-LINK	5/16	4,700	\$4.17
3185-58675	HOPE 24096	3/8" MID-LINK	3/8	6,600	\$5.07
3185-58685	HOPE 24098	1/2" OR 7/16" MID-LINK	1/2	11,300	\$8.39

## Repair Links/Lap Links (Zinc plated)



- Applications:
- A temporary repair link also used to couple light attachments
  - For use with proof coil chain

- Description:
- A mild steel, available with bright, hot galvanized or zinc plated finishes

EDP#	Item Code	Description	Pcs. per Ctn.	WLL	Approx. Wt. Ea. Lbs.	Price
1891-60991	COLMCK 84091	3/16"X1" PLTD REPAIR LINK	100	240	.035	\$0.68
1891-61391	COLMCK 84291	1/4"X1-1/4" PLTD REPAIR LK	50	400	.075	\$0.86
1891-61791	COLMCK 84591	5/16"X1-1/2" PLTD REPAIR LK	50	950	.145	\$1.76
1891-62191	COLMCK 84891	3/8" X 2" PLATED REPAIR LINK	50	1,250	.240	\$2.43
1891-62591	COLMCK 84991	1/2" X 2-1/2", PLTD REPAIR LINK	100	240	.035	\$3.85

Material Handling Equipment



## Chain Fittings & Accessories

### GALVANIZED STEEL COLD SHUTS

For Use with Proof Coil Chain - Furnished with plain ends.  
Standard Package -  
3/16", 1/4", 5/16" & 3/8" - 25  
7/16", 1/2 & 5/8" - 10



EDP#	Item Code	Description	WLL	Price
1891-58191	COLMCK 51091	3/16" GALV COLD SHUTS	525	\$1.10
1891-58591	COLMCK 51191	1/4" GALV COLD SHUTS	925	\$1.14
1891-58991	COLMCK 51291	5/16" GALV COLD SHUTS	1450	\$0.95
1891-59391	COLMCK 51391	3/8" GALV COLD SHUTS	2110	\$1.35
1891-59791	COLMCK 51491	7/16" GALV COLD SHUTS	2850	\$1.89
1891-60191	COLMCK 51591	1/2" GALV COLD SHUTS	3750	\$2.60
1891-60591	COLMCK 51691	5/8" GALV COLD SHUTS	5850	\$8.29

## Hooks

### Clevis Type Grab and Slip Hooks



Slip Hook



Grab Hook



•For use with G-40 Log Chain and G-7 Transportation Chain to assure a safe tie down assembly as noted.

EDP#	Item Code	Description	Type	Size Chain	Load	Price
1891-48991	COLMCK M804	1/4" CLEVIS GRAB HOOK	G40	1/4"	2600	\$ 6.91
1891-49391	COLMCK M805L	5/16" CLEVIS GRAB HOOK	G40	5/16"	4000	\$ 8.94
1891-49791	COLMCK M806L	3/8" CLEVIS GRAB HOOK	G40	3/8"	5400	\$11.77
1891-50191	COLMCK M807L	7/16" CLEVIS GRAB HOOK	G40	7/16"	7200	\$15.39
1891-50591	COLMCK M808L	1/2" CLEVIS GRAB HOOK	G40	1/2"	9200	\$18.79
1891-50991	COLMCK M810L	5/8" CLEVIS GRAB HOOK	G40	5/8"	11500	\$38.03
1891-51391	COLMCK M904L	1/4" CLEVIS SLIP HOOK	G40	1/4"	2600	\$ 8.72
1891-51791	COLMCK M905L	5/16" CLEVIS SLIP HOOK	G40	5/16"	4000	\$11.09
1891-52191	COLMCK M906L	3/8" CLEVIS SLIP HOOK	G40	3/8"	5400	\$13.81
1891-52591	COLMCK M907L	7/16" CLEVIS SLIP HOOK	G40	7/16"	7200	\$24.45
1891-52991	COLMCK M908L	1/2" CLEVIS SLIP HOOK	G40	1/2"	9200	\$31.13
1891-53391	COLMCK M910L	5/8" CLEVIS SLIP HOOK	G40	5/8"	11500	\$45.96
1891-77791	COLMCK 62273	1/4" - 5/16" G-7 CL GRAB HK	G70	1/4"-5/16"	4700	\$10.66
1891-78191	COLMCK 62373	3/8" G-7 CLEVIS GRAB HOOK	G70	5/16"	6600	\$13.79
1891-78591	COLMCK M808A	1/2" G-7 CLEVIS GRAB HOOK	G70	3/8"	11300	\$22.55

Material Handling Equipment

## Hooks

### Eye-Type Grab and Slip Hooks - G40

•For use with Hi-Test and Proof Coil Chain, Heat Treated. Drop Forged Steel.  
NOTE: Safety Latch Not Included.



EDP#	Item Code	Description	Type	Chain Size In.	WLL	Price
1891-44991	COLMCK 71193	1/4" EYE TYPE GRAB HOOK	G40	1/4"	2,600	\$ 3.57
1891-45391	COLMCK 71292	5/16" EYE TYPE GRAB HOOK	G40	5/16"	3,900	\$ 4.67
1891-45791	COLMCK 71392	3/8" EYE TYPE GRAB HOOK	G40	3/8"	5,400	\$ 6.48
1891-46191	COLMCK 71492	7/16" EYE TYPE GRAB HOOK	G40	7/16"	7,200	\$10.73
1891-46591	COLMCK 71592	1/2" EYE TYPE GRAB HOOK	G40	1/2"	9,200	\$14.84
1891-46991	COLMCK 75192	1/4" EYE TYPE SLIP HOOK	G40	1/4"	2,600	\$ 4.00
1891-47391	COLMCK 75293	5/16" EYE TYPE SLIP HOOK	G40	5/16"	3,900	\$ 6.01
1891-47791	COLMCK 75392	3/8" EYE TYPE SLIP HOOK	G40	3/8"	5,400	\$ 6.66
1891-48191	COLMCK 75492	7/16" EYE TYPE SLIP HOOK	G40	7/16"	7,200	\$11.53
1891-48591	COLMCK 75592	1/2" EYE TYPE SLIP HOOK	G40	1/2"	9,200	\$15.33



## Chain Fittings & Accessories

### Clevis - Straight & Twisted



- Extra long shackle-type eyes
- Pins are zinc plated and have hairpin lock
- Hot forged and heat treated
- For Towing Applications (Not for lifting)

EDP#	Item Code	Description	Clevis Desc.	Dia.In.- Usable Lgth. In.	Width	Length	WLL	Repl. Pin	Price
3185-58895	HOPE 24313	5/8" PINS FOR BO CLEVIS	-	5/8 x 3 1/8					\$ 3.77
3185-58915	HOPE 24315	7/8" PINS FOR BO CLEVIS	-	7/8 x 3 3/4					\$ 5.19
3185-58925	HOPE 24316	1" PINS FOR BO CLEVIS	-	1 x 4 1/4					\$ 6.77
3185-58465	HOPE 24026	7/8" BO HD TWIST CLEVIS	Twist	3/4 / 7/8	1-3/8	3-1/2	16000	M817	\$15.81
3185-58385	HOPE 24014	3/4" BO STRAIGHT CLEVIS	Straight	5/8 / 3/4	1-15/16	4	12000	M813	\$11.19
3185-58395	HOPE 24015	7/8" BO STRAIGHT CLEVIS	Straight	3/4 / 7/8	1-3/8	4-7/8	16000	M817	\$13.22
3185-58415	HOPE 24017	15/16" BO STRAIGHT CLEVIS	Straight	7/8 / 15/16	1-1/2	5-1/4	20000	M819	\$18.66
3185-58425	HOPE 24018	1" BO STRAIGHT CLEVIS	Straight	1 / 1	2-1/4	5-1/2	25000	M829	\$23.11
3185-58445	HOPE 24024	3/4" BO HD TWIST CLEVIS	Twist	5/8 / 3/4	1-15/16	4	12000	M813	\$11.53
1891-43391	COLMCK M8278	7/8" BO HD TWIST CLEVIS	Twist	3/4 / 7/8	1-3/8	4-7/8	16000	M817	\$28.36
3185-58475	HOPE 24027	15/16 BO HD TWIST CLEVIS	Twist	7/8 / 15/16	1-1/2	5-1/4	20000	M819	\$16.19
3185-58485	HOPE 24028	1" BO HD TWIST CLEVIS	Twist	1 / 1	2-1/8	5-1/2	25000	M829	\$23.58
3185-58405	HOPE 24016	7/8" BO HD STRAIGHT CLEVIS	Straight	3/4 / 7/8	1-3/8	3-1/2	16000	M817	\$15.62

## Shackles

### Anchor Shackles - Screw Pin Type

These shackles have higher working load limits than specified by Federal Specifications. All Shackle Pins are forged from alloy steel, heat treated and tempered to give greater strength. All shackles are marked with size (Inches and Millimeters) and working load limit in tons. Ultimate strength equals 6 times working load limit. Proof load equals 2.2 times working load limit. All bolt, nut and Cotter Shackles have thread protected ends. Painted (denoted with "P") orange in color. Ton = 2,000 Pounds (3/16 Inch - 2 Inch), 2,200 Pounds (2 1/2 Inch - 3 1/2 Inch). Standard industry tolerances apply. **Ideal for Tow Rope Application.**



EDP#	Item Code	Description	Wtd. Between Eyes In.	WLL	Lbs.	Price
1891-53791	COLMCK M646P	1/4" ANCHOR SHACKLE	15/32	3/4	.12	\$ 5.97
1891-54191	COLMCK M647P	5/16" ANCHOR SHACKLE	17/32	1	.20	\$ 7.46
1891-54591	COLMCK M648P	3/8" ANCHOR SHACKLE	21/32	1 1/2	.30	\$ 7.96
1891-54991	COLMCK M650P	1/2" ANCHOR SHACKLE	13/16	3	.75	\$ 11.06
1891-55391	COLMCK M651P	5/8" ANCHOR SHACKLE	1 1/16	4 1/2	1.3	\$ 18.99
1891-55791	COLMCK M652P	3/4" ANCHOR SHACKLE	1 1/4	6 1/2	2.3	\$ 27.29
1891-56191	COLMCK M653P	7/8" ANCHOR SHACKLE	1 7/16	8 1/2	3.5	\$ 36.97
1891-56591	COLMCK M654P	1" ANCHOR SHACKLE	1 11/16	10	5.0	\$ 48.66
1891-56991	COLMCK M655P	1-1/8" ANCHOR SHACKLE	1 13/16	12	7.0	\$ 73.16
1891-57391	COLMCK M656P	1-1/4" ANCHOR SHACKLE	2 1/32	14	9.5	\$105.22
1891-57791	COLMCK M657P	1-1/2" ANCHOR SHACKLE	2 3/8	20	17.2	\$160.26

Material Handling Equipment

## Shackles

### Utility Clevis



EDP#	Item Code	Description	Body Size	Pin Size	Width	Inside Lgth. In.	Price
1891-38591	COLMCK M1546	1/4" BO UTILITY CLEVIS	1/4	5/16	15/32	7/8	\$ 5.98
1891-38991	COLMCK M1547	5/16" BO UTILITY CLEVIS	5/16	3/8	17/32	1 3/16	\$ 6.95
1891-39391	COLMCK M1548	3/8" BO UTILITY CLEVIS	3/8	7/16	21/32	1 15/16	\$ 7.77
1891-39791	COLMCK M1549	7/16" BO UTILITY CLEVIS	7/16	1/2	23/32	1 3/4	\$ 9.00
1891-40191	COLMCK M1550	1/2" BO UTILITY CLEVIS	1/2	5/8	13/16	1 11/16	\$ 9.92
1891-40591	COLMCK M1551	5/8" BO UTILITY CLEVIS	5/8	3/4	1 1/16	2	\$15.95



## Carbon Chains & Binders-Heavy Duty

### Chain

#### Grade 30 Proof Coil Chain-Reel



- Proof Coil or common chain is made from low carbon steel for use as a general utility chain.
- Not recommended for overhead lifting or where its failure could cause damage to property or life.
- Plated
- Reels only

EDP#	Item Code	Description	WLL	LGTH. FT.	WT. LBS. PER REEL	Price
1891-21853	COLMCK 671430	3/16"X100' REEL PROOF COIL	750	100	42	\$76.22
1891-22053	COLMCK 671431	1/4" X 75' REEL PROOF COIL	1250	75	56	\$80.34
1891-22253	COLMCK 671432	5/16" X 55' REEL PROOF COIL	1900	55	55	\$91.77
1891-22453	COLMCK 671433	3/8" X 35' REEL PROOF COIL	2650	35	52	\$82.91

#### Grade 30 Proof Coil Chain Pails

- Most popular sizes of proof coil chain
- Easy storage and display
- Now in pails!

EDP#	Item Code	Description	Wt. Lbs	Price
1891-22653	COLMCK 671470	3/16"X159' PROOF COIL PAIL	65	\$127.17
1891-22853	COLMCK 671421	1/4" X 100' PROOF COIL PAIL	65	\$112.23
1891-23053	COLMCK 671472	5/16" X 62' PROOF COIL PAIL	65	\$107.97
1891-23253	COLMCK 671473	3/8" X 43' PROOF COIL PAIL	65	\$111.46

#### High Test Chain Grade 40 (G-43)



EDP#	Item Code	Description	WLL	Wt. Lbs. Per Reel	Price
1891-24053	COLMCK 678421	1/4" X 75' REEL HT CHAIN	2600	58	\$99.19
1891-24253	COLMCK 678423	3/8" X 35' REEL HT CHAIN	5400	63	\$83.49

#### Transport Chain Grade 70 (G-70) Bulk

- G-7 Transport Chain is a smaller, 25% lighter chain that can now be used in place of the larger sized high test grade.

EDP#	Item Code	Description	WLL	Wt. Per 100 Ft.	Price
1891-76191	COLMCK 678521	1/4" GR #70 TRANSPORT CHAIN	3150	65	\$2.29
1891-76591	COLMCK 678522	5/16" GR#70 TRANSPORT CHAIN	4700	111	\$2.71
1891-76991	COLMCK 678523	3/8" GR #70 TRANSPORT CHAIN	6600	157	\$3.50
1891-77391	COLMCK 678525	1/2" GR #70 TRANSPORT CHAIN	11300	264	\$5.94

#### Transport Chain Grade 70 (G-70) Assemblies



- Chain Assemblies of G-7 with Clevis Grap Hook at each end. G-7 meets D.O.T. specifications. Not to be used for overhead lifting.

EDP#	Item Code	Description	WLL	Wt. Lbs	Price
1891-71791	COLMCK 639032GGC16	G7 5/16X16' TIE DOWN CHAIN	4700	19	\$31.11
1891-72191	COLMCK 639032GGC20	G7 5/16"X20' TIE DOWN CHAIN	4700	24	\$37.78
1891-72591	COLMCK 639038GGC16	G7 3/8"X16' TIE DOWN CHAIN	6600	28	\$43.23
1891-72991	COLMCK 639038GGC20	G7 3/8"X20' TIE DOWN CHAIN	6600	34	\$46.67
1891-02000	COLMCK 638350	G7 1/2" x 20' TIE DOWN CHAIN	11300	52	\$217.50

### Binders

#### Mighty-Tiny Chain Binder (For use with Proof Coil Chain)



Working Load Limit, 375 lbs. Steel Clevis and tongue. Three inch take-up. Takes 3/16" to 1/4" chain. Has 8" Malleable handle.

EDP#	Item Code	Description	Lbs	Price
1891-62991	COLMCK 48949	"Mighty-Tiny" Chain Tightener	1-1/2	\$15.38



## Carbon Chains & Binders

### Binders

#### Swivel Load Binders (For G30, G40 Chain)



EDP#	Item Code	Description	Lbs	Price
1891-63391	COLMCK 48315	1/4", 5/16 and 3/8" RED DEVIL LOAD BINDER	6	\$58.97
1891-63791	COLMCK 48316	3/8" and 1/2" RED DEVIL LOAD BINDER	9	\$75.08

#### Ratchet Load Binders

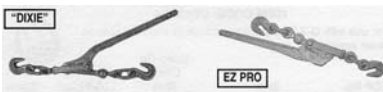


- Offers continuous take-up feature - infinite adjustment - "gets the last half link of chain".
- Handy one piece assembly has no bolts and nuts to loosen.
- Ratchet spring is rust proofed.
- Easy operating, positive ratchet.



EDP#	Item Code	Description	Size In.	Take-Up	WLL	Price
1891-00800	COLMCK 48365CMG	5/16"G70,3/8"G40 RATCHET	3/8	8	5400	\$ 49.11
1891-01000	COLMCK 48366CMG	3/8 G7,1/2 G43 RATCHET	1/2	8	9200	\$ 53.93
1953-44553	CROSBY 10-48422	RA L-140 LEBUS RATCHET LOAD	1/2	8	9200	\$163.68
1953-44753	CROSBY 10-48404	R7 L-140 LEBUS RATCHET LOAD	3/8	8	5400	\$148.38

#### Transportation (G7) Load Binders



Highest quality drop forged construction. Each binder proof tested at the factory. Minimum breaking strength permanently forged in each handle. This tough binder swivels 360° at both ends, toggles away from the load and allows easier release of the handle under all load conditions.

EDP#	Item Code	Description	Designed for chain	WLL	Price
1953-44353	CROSBY 10-48100	W-1 L-130 LEBUS LOAD BINDER	--	5400	\$55.50
1891-00900	COLMCK 48305CMG	5/16"G7,3/8"G40 LEVER LOAD	5/16" G-7/ 3/8" G-40	5400	\$36.72
1891-89971	COLMCK 48305	3/8-5/16" DIXIE LOAD BINDER	5/16" G-7/ 3/8" G-40	5400	\$50.51
1891-89981	COLMCK 48306	1/2"-3/8" DIXIE LOAD BINDER	3/8" G-7/ 1/2" G-40	9200	\$84.52
1891-89991	COLMCK 48405	5/8 X 3/8" EZ Pro	5/16" G-7/ 3/8" G-40	5400	\$65.40

#### Load Binder Light Duty Nylon

- The Liftall Ratchet Load Binder is simple to operate and can be tensioned with one hand to safety secure any type load. Comes with a wide handle for a full grip to ratcheting.



EDP#	Item Code	Description	WLL	Price
3782-00682	LIFTAL 60103B	1"X15' RATCHET LOAD BINDER	700	\$12.87
3782-64128	LIFTAL 60101	1" x 10' RATCHET LOAD BINDER LITE DTY	700	\$15.90

#### Load Binder Heavy Duty Nylon (Ratchet feet with flat hook both ends)



- The Liftall Ratchet Load Binder is simple to operate and can be tensioned with one hand to safety secure any type load. Comes with a wide handle for a full grip to ratcheting.

EDP#	Item Code	Description	WLL	Price
3782-30182	LIFTAL 61001	5 TON RATCHET LOAD BINDER	10,000	\$29.53
--	LIFTAL 60513 x 40'	5 TON RATCHET LOAD BINDER (For Hay Bales)	10,000	Call
3782-66028	LIFTAL 61001A	RATCHET ONLY	--	\$25.09
3782-66328	LIFTAL 61001B	RATCHET WEB BELT, 2" x 1.5', FLATHOOK	--	\$ 9.71





## Nylon Slings

### Sling Types - Web



## Web Slings

### STANDARD WEB SLING TYPES

#### Hardware Slings

*Unilink* and *Web-Trap* hardware can help to extend sling life by protecting the webbing from abrasion on rough crane hooks. Hardware can often be reused, lowering sling replacement costs.

**Type U (UU)** - Has the preferred and economical *Unilink* fitting on each end for use in a vertical, choker or basket hitch. *Unilinks* allow choking from either end to save time and vary wear points. See page 18.

**Type 1 (TC)** - Has a *Web-Trap* triangle and choker fitting on either end. Typical use is in a choker hitch. Can also be used in vertical and basket hitches.

**Type 2 (TT)** - Has a *Web-Trap* triangle on each end. Normally used in a basket hitch, but can also be used in a vertical hitch. They cannot be used as a choker.

#### Eye Type

**Type 3 (EE)** - Flat Eye slings are very popular and can be used in all three types of hitches. They are easier to remove from beneath the load than sling types 1, 2 and 4. Unless type 4 is requested, type 3 will be supplied as the standard EE sling.

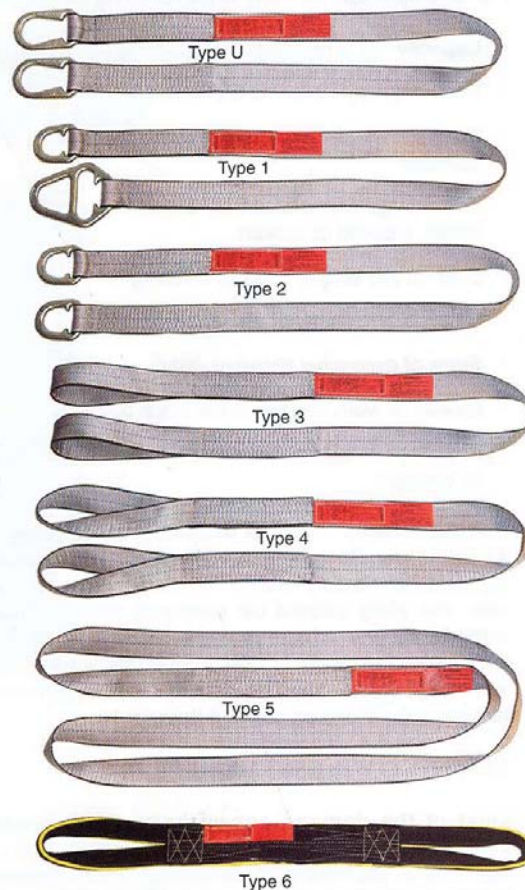
**Type 4 (EE)** - Twisted Eye slings are similar to Type 3 except the eyes are turned 90° to form a better choker hitch. The eyes of a Type 4 nest better on the crane hook.

#### Endless Type

**Type 5 (EN)** - Endless slings are versatile and the most economically priced. They can be used in all three types of hitches. The sling can be rotated to minimize wear. The sling legs can be spread for improved load balance.

#### Reverse Eye Type

**Type 6 (RE)** - An endless sling with butted edges sewn together to double the sling width. They have reinforced eyes and wear pads on both sides of body and eyes. The result is an extremely strong and durable sling.



#### Lift-All Web Selector - Quick Comparisons

Type of Webbing	Approximate Thickness	Relative Strength/Width Factor A	Price/Strength Factor B	Advantages
Webmaster	1600	3/16"	100%	Webmaster webs are the industry standard.
	1200	1/8"	75%	Wider bearing surface per capacity.
Tuff-Edge		3/16"	105%	Tuff-Edge fights edge abrasion and cutting - the #1 cause of web sling damage. Up to 30% better against cuts.
Dura-Web	2000	5/16"	125%	Dura-Web lasts 25% longer against surface abrasion
	1000	3/16"	62.5%	137% Wider bearing surface per capacity.

FACTOR A - Relative strength factor. This column compares the strength of the various webs to *Webmaster* 1600 in the same widths.

FACTOR B - Price to strength comparison. This column compares the relative cost per capacity of the various webs to *Webmaster* 1600 using a 2" x 10' Type 3 sling.



## Nylon Slings

### Sling Types - Web

## Web Slings



### Tapering Eyes

As a standard practice, the eyes, or bearing points, of sling types 3 and 4 are tapered to accommodate a crane hook on slings that are 3" and wider. Untapered eyes are available upon request. Type 5 (Endless) slings are NOT tapered unless specified on order. *Dura-Web 2000* slings are not tapered in any width.



## HOW TO ORDER

Definition of Web Sling Order Code

**EE 1 - 8 01 T x 12**

### Sling Type (Two Letters)

- UU - Type U - *Unilink* on each end
- TC - Type 1 - Triangle & Choker
- TT - Type 2 - Triangle on each end
- EE - Type 3 - Eye & Eye  
(Flat eye is standard)
- Type 4 - Eye & Eye  
(Twisted Eye option)
- EN - Type 5 - Endless
- RE - Type 6 - Reversed Eye
- WL - Wide Lift
- SH - Stone Handling

**Number of Plies (One Digit)**  
1, 2, 3 or 4

**Web Class - (One or Two Digits)**

- 2 - *Dura-Web 2000*
- 1 - *Dura-Web 1000*
- 8 - *Webmaster 1600* or *Tuff-Edge*
- 6 - *Webmaster 1200*
- SH - Stone Handling

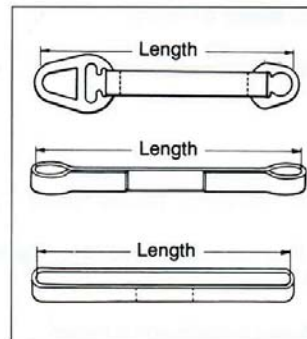
### Sling Length

Use actual pull to pull length (Reach) in feet.<sup>1</sup>

### Web Material

For *Tuff-Edge* polyester webbing add letter "T".  
For other polyester webbing add letter "D".

### Sling Width in inches (Two Digits)



Always measure sling pull to pull when flat.

### Sling Length Tolerance for Web Sling

Sling Type	± Tolerance *
1 Ply	1.5" +1.5 % of sling length
2 Ply	2.0" + 2 % of sling length
3 & 4 Ply	3.0" + 3 % of sling length

\* For web sling widths wider than 6", add 1/2" to these values.  
For tighter tolerance or matched set length requirements please consult with Customer Service.

Note: To order Bridle Slings see page 28.

### Anti-Abrasion Treatment

*Lift-All* recommends that web slings be manufactured from abrasion resistant latex treated webbing:

Treatment is standard on both nylon and polyester web slings. Natural, untreated webbing is available upon request.

Note: Heavy duty treatments are available as a supplemental process for greater protection.

### Tuff-Tag and Warning Sheet



OSHA requires all web slings to show rated capacities and type of material. The *Lift-All Tuff-Tag* is made from an abrasion resistant polymer that will remain legible far longer than any leather or vinyl tags. In fact, a *Tuff-Tag* will consistently outlast the useful life of a sling.

A Warning Sheet is included with every web sling order from *Lift-All*. The sheet lists inspection information and operating practices applying to synthetic web slings.





## Nylon Slings

**LIFTALL TUFF-EDGE™** - This new standard for heavy duty industrial slings.



Most web sling damage starts on the edge and progresses across the face of the webbing. Tuff-Edge™ is designed to reduce edge damage. Polymer coated yarns are woven into the edges of the Tuff-Edge™. Independent lab tests prove Tuff-Edge™ to be 67% more resistant to edge abrasions and 30% more resistant to edge cutting than standard sling webbing. Laboratory results may differ from individual application circumstances but improved results should be expected.

### ADVANTAGES OF TUFF-EDGE™ NYLON SLINGS

Polymer coated edge yarns resist cutting and abrasion to extend sling life. Silver colored web treatment fights abrasion for additional sling life. Easy identification - silver body and black edges, blue center stripe.

Strength identical to Webmaster® 1600. Proven sling web construction with red core warning yarns (aids in inspection process). Unilink is standard for all 2", 3", & 4" Tuff-Edge™ hardware slings. Available in 1", 2", 3", 4", and 5" and 6" widths and up to 4 ply. Tuff-Edge™ webbing is approximately 3/16" thick.

Item Code	Description	Vertical Cap. Lbs.	Choker Cap. Lbs.	V. Basket Cap. Lbs.	Web Width	Price
LIFTAL EE1-801T	One Ply Eye & Eye	1600	1250	3200	1"	Call
LIFTAL EE1-802T	One Ply Eye & Eye	3200	2500	6400	2"	Call
LIFTAL EE1-803T	One Ply Eye & Eye	4800	3800	9600	3"	Call
LIFTAL EE1-804T	One Ply Eye & Eye	6400	5000	12800	4"	Call
LIFTAL EE1-806T	One Ply Eye & Eye	9600	7700	19200	6"	Call
LIFTAL EE2-801T	Two Ply Eye & Eye	3200	2500	6400	1"	Call
LIFTAL EE2-802T	Two Ply Eye & Eye	6400	5000	12800	2"	Call
LIFTAL EE2-803T	Two Ply Eye & Eye	8600	6900	17200	3"	Call
LIFTAL EE2-804T	Two Ply Eye & Eye	11500	9200	23000	4"	Call
LIFTAL EE2-806T	Two Ply Eye & Eye	16300	13000	32600	6"	Call
LIFTAL EE3-801T	Three Ply Eye & Eye	4100	3300	8200	1"	Call
LIFTAL EE3-802T	Three Ply Eye & Eye	8300	6600	16600	2"	Call
LIFTAL EE3-803T	Three Ply Eye & Eye	12500	10000	25000	3"	Call
LIFTAL EE3-804T	Three Ply Eye & Eye	16000	12800	32000	4"	Call
LIFTAL EE3-806T	Three Ply Eye & Eye	23000	18400	46000	6"	Call
LIFTAL EE4-801T	Four Ply Eye & Eye	5000	4000	10000	1"	Call
LIFTAL EE4-802T	Four Ply Eye & Eye	10000	8000	20000	2"	Call
LIFTAL EE4-803T	Four Ply Eye & Eye	14900	11900	29800	3"	Call
LIFTAL EE4-804T	Four Ply Eye & Eye	19800	12800	39600	4"	Call
LIFTAL EE4-806T	Four Ply Eye & Eye	29800	23800	59600	6"	Call
LIFTAL EN1-801T	One Ply Type-5 (Endless)	3200	2500	6400	1"	Call
LIFTAL EN1-802T	One Ply Type-5 (Endless)	6400	5000	12800	2"	Call
LIFTAL EN1-803T	One Ply Type-5 (Endless)	8600	6900	17200	3"	Call
LIFTAL EN1-804T	One Ply Type-5 (Endless)	11500	8200	23000	4"	Call
LIFTAL EN1-806T	One Ply Type-5 (Endless)	16300	13000	32600	6"	Call
LIFTAL EN2-801T	Two Ply Type-5 (Endless)	6200	4900	12400	1"	Call
LIFTAL EN2-802T	Two Ply Type-5 (Endless)	12200	9800	24400	2"	Call
LIFTAL EN2-803T	Two Ply Type-5 (Endless)	16300	13000	32600	3"	Call
LIFTAL EN2-804T	Two Ply Type-5 (Endless)	20700	16500	41400	4"	Call
LIFTAL EN2-806T	Two Ply Type-5 (Endless)	28600	23000	57200	6"	Call
LIFTAL EN3-801T	Three Ply Type-5 (Endless)	8000	6400	16000	1"	Call
LIFTAL EN3-802T	Three Ply Type-5 (Endless)	16000	12800	32000	2"	Call
LIFTAL EN3-803T	Three Ply Type-5 (Endless)	21500	17200	43000	3"	Call
LIFTAL EN3-804T	Three Ply Type-5 (Endless)	28700	23000	57400	4"	Call
LIFTAL EN3-806T	Three Ply Type-5 (Endless)	40700	32500	81400	6"	Call
LIFTAL EN4-801T	Four Ply Type-5 (Endless)	10000	8000	20000	1"	Call
LIFTAL EN4-802T	Four Ply Type-5 (Endless)	19800	15800	39600	2"	Call
LIFTAL EN4-803T	Four Ply Type-5 (Endless)	26700	21300	53400	3"	Call
LIFTAL EN4-804T	Four Ply Type-5 (Endless)	35600	28400	71200	4"	Call
LIFTAL EN4-806T	Four Ply Type-5 (Endless)	50500	40400	101000	6"	Call
LIFTAL TC1-806T	One Ply Type-1	9600	7700	19200	6"	Call
LIFTAL TC2-806T	Two Ply Type-1	16800	13400	33600	6"	Call
LIFTAL TT1-806T	One Ply Type-2	9600	N/A	19200	6"	Call
LIFTAL TT2-806T	Two Ply Type-2	16800	N/A	33600	6"	Call
LIFTAL UU1-802T	One Ply Type-U	3200	2500	6400	2"	Call
LIFTAL UU1-803T	One Ply Type-U	4800	3800	9600	3"	Call
LIFTAL UU1-804T	One Ply Type-U	6400	5000	12800	4"	Call
LIFTAL UU2-802T	Two Ply Type-U	6400	5000	12800	2"	Call
LIFTAL UU2-803T	Two Ply Type-U	8600	6900	17200	3"	Call
LIFTAL UU2-804T	Two Ply Type-U	11500	9200	23000	4"	Call





## Nylon Slings

The TUFLEX® Family of Polyester Roundslings



### TUFLEX® - General Advantages

Soft and pliable. Choker hitch does not lock-up on the load. Very consistent matched lengths. 100% of load on inside fibers. Double wall jacket for added protection. Low stretch -- approx. 3%. Protects surface of load. Color coded for rated capacity. Unaffected by UV (Sunlight degradation). Conforms nicely to the load. Cost effective - best price performer.



Call for specific pricing - Specify Length.

Item Code	Description	Vertical Cap. Lbs.	Choker Cap. Lbs.	V. Basket Cap. Lbs.	Color	Price
LIFTAL EE30	Eye & Eye	2650	2120	5300	Purple	Call
LIFTAL EE60	Eye & Eye	5300	42340	10600	Green	Call
LIFTAL EE90	Eye & Eye	8400	6720	16800	Yellow	Call
LIFTAL EE120	Eye & Eye	10600	8500	21200	Tan	Call
LIFTAL EE150	Eye & Eye	13200	10560	26400	Red	Call
LIFTAL EE180	Eye & Eye	16800	13440	33600	Orange	Call
LIFTAL EE240	Eye & Eye	21200	17000	17000	Blue	Call
LIFTAL EN30	Endless	2650	2120	5300	Purple	Call
LIFTAL EN60	Endless	5300	4240	10600	Green	Call
LIFTAL EN120	Endless	10600	8500	21200	Tan	Call
LIFTAL EN150	Endless	13200	10560	36400	Red	Call
LIFTAL EN180	Endless	16800	13440	33600	Orange	Call
LIFTAL EN240	Endless	21200	17000	42400	Blue	Call
LIFTAL EN360	Endless	31700	25300	63400	Gray	Call
LIFTAL EN600	Endless	52900	42300	105800	Brown	Call
LIFTAL EN800	Endless	66100	52880	132200	Olive	Call
LIFTAL EN1000	Endless	90000	72000	180000	Black	Call

## Wire Rope

### Accessories

Wire Rope Clips Galvanized



EDP#	Item Code	Description	Rope Dia. In.	Wt.	Price
1849-36349	CHIC 23160-2	1/8" GALV WIRE ROPE CLIP	1/8	0.05	\$0.99
1849-36649	CHIC 23165-7	3/16" GALV WIRE ROPE CLIP	3/16	0.08	\$0.99
1849-36949	CHIC 23170-1	1/4" GALV WIRE ROPE CLIP	1/4	0.12	\$1.18
1849-37249	CHIC 23175-6	5/16" GALV WIRE ROPE CLIP	5/16	0.15	\$1.20
1849-37549	CHIC 23180-0	3/8" GALV WIRE ROPE CLIP	3/8	0.21	\$1.81
1849-37849	CHIC 23185-5	7/16" GALV WIRE ROPE CLIP	7/16	0.25	\$2.11
1849-38149	CHIC 23190-9	1/2" GALV WIRE ROPE CLIP	1/2	0.41	\$2.51
1849-38449	CHIC 23200-5	5/8" GALV WIRE ROPE CLIP	5/8	0.53	\$3.29
1849-38749	CHIC 23205-0	3/4" GALV WIRE ROPE CLIP	3/4	0.76	\$4.68
1849-39049	CHIC 23210-4	7/8" GALV WIRE ROPE CLIP	7/8	1.40	\$6.81
1849-39349	CHIC 23215-9	1" GALV WIRE ROPE CLIP	1	1.56	\$8.52

Log-on to [www.johnday.com](http://www.johnday.com)  
for current pricing & availability,  
order status and purchase history.



## Wire Rope

### Wire Rope Thimble



EDP#	Item Code	Description	Rope Dia. In.	Price
1849-39649	CHIC 22505-2	1/8"GALV WIRE ROPE THIMBLE	1/8	\$0.75
1849-39849	CHIC 22510-6	3/16"GALV WIRE ROPE THIMBLE	3/16	\$0.75
1849-39949	CHIC 22515-1	1/4"GALV WIRE ROPE THIMBLE	1/4	\$0.75
1849-40249	CHIC 22520-5	5/16"GALV WIRE ROPE THIMBL	5/16	\$0.85
1849-40549	CHIC 22525-0	3/8"GALV WIRE ROPE THIMBLE	3/8	\$0.85
1849-40849	CHIC 22530-4	7/16"GALV WIRE ROPE THIMBLE	7/16	\$1.48
1849-41149	CHIC 22535-9	1/2"GALV WIRE ROPE THIMBLE	1/2	\$0.92
1849-41449	CHIC 22540-3	5/8"GALV WIRE ROPE THIMBLE	5/8	\$2.66
1849-41749	CHIC 22545-8	3/4"GALV WIRE ROPE THIMBLE	3/4	\$3.05

## Cable

### Fiber Core Cable Extra Improved Plow (Steel)



EDP#	Item Code	Description	Class	Price
3782-41017	LIFTAL 101	1/4" 6X19 EIP F/C BETH REG	6x19	\$2.00
3782-41317	LIFTAL 102	5/16" 6X19 EIP F/C BETH REG	6x19	\$2.35
3782-41617	LIFTAL 103	3/8" 6X19 EIP F/C BETH REG	6x19	\$2.63
3782-41917	LIFTAL 104	7/16" 6X19 EIP F/C BETH REG	6x19	\$3.09
3782-42217	LIFTAL 105	1/2" 6X25 EIP F/C BETH REG	6x25	\$3.15
3782-42517	LIFTAL 106	5/8" 6X25 EIP F/C BETH REG	6x25	\$4.15
3782-42817	LIFTAL 107	3/4" 6X25 EIP F/C BETH REG	6x25	\$5.82
3782-43117	LIFTAL 134	7/8" 6X25 EIP F/C BETH REG	6x25	\$8.58
3782-45517	LIFTAL 118	1/4" 6X37 EIP F/C BETH REG	6x37	\$2.61
3782-45817	LIFTAL 119	5/16" 6X37 EIP F/C BETH REG	6x37	\$3.07
3782-46117	LIFTAL 120	3/8" 6X37 EIP F/C BETH REG	6x37	\$3.54
3782-46717	LIFTAL 121	1/2" 6X37 EIP F/C BETH REG	6x37	\$4.12

### Aircraft Cable Galvanized

•These high quality wire ropes are available in cut lengths or by the reel

EDP#	Item Code	Description	Approx. Wt. per 1,000 Ft. Lbs.	Nom. Breaking Strgth. Lbs.	Price
3782-61128	LIFTAL 135	1/16"7X7 GALV AIRCRAFT CABL	7.5	480	\$0.11
3782-61528	LIFTAL 137	1/8" 7X7GALV AIRCRAFT CABLE	28	1700	\$0.16
3782-61728	LIFTAL 138	5/32"7X7GALV AIRCRAFT CABLE	43	2600	\$0.41
3782-61928	LIFTAL 139	3/16"7X7GALV AIRCRAFT CABLE	62	3700	\$0.32
3782-62128	LIFTAL 140	1/4"7X7GALV AIRCRAFT CABLE	105	6000	\$0.57
3782-62528	LIFTAL 143	3/16"7X19GALV AIRCRFT CABLE	65	4200	\$0.31
3782-62728	LIFTAL 144	1/4"7X19GALV AIRCRAFT CABLE	110	7000	\$0.45
3782-62928	LIFTAL 145	5/16"7X19GALV AIRCRAFT CABLE	173	9800	\$0.72
3782-63328	LIFTAL 152	1/8"7X19 GALV AIRCRAFT CABL	29	2000	\$0.26
3782-63728	LIFTAL 155	5/32"7X19 GALV AIRCRFT CABL	45	2800	\$0.30
3782-63928	LIFTAL 160	3/8"7X19 GALV AIRCRAFT CABL	243	14400	\$0.89
3782-67228	LIFTAL 153	3/32"7X19 GALV AIRCRAFT CAB	17	1000	\$0.26

### PVC Coated Cable Galvanized

EDP#	Item Code	Description	Class	Price
3782-61328	LIFTAL 136	1/16"X3/32"7X7 PVC CLEAR	7 x 7	\$0.53
3782-62328	LIFTAL 141	3/32"X3/16"7X7 PVC CLEAR	7 x 7	\$0.25
3782-63128	LIFTAL 150	1/8"X3/16"7X7 PVC CLEAR	7 x 7	\$0.62

## Cable

### Farmhand Cable

EDP #	Item Code	Description	Length	Price
3782-49418	LIFTAL <354>	3/8" 6X19 FARMHAND CABLE	54'	\$132.27
3782-64128	LIFTAL <358>	3/8" 6X19 FARMHAND CABLE	58'	\$142.07



## Hoists

### Lever Hoists

#### Mini Ratchet Lever Hoist Series 602 & 603



The CM Series 602 & 603 mini hoists are the most compact ratchet lever hoists in the market with these great features: Plated load chain is standard. Weston type load break. Rubber grip for better comfort and security. Lightweight design weighs only 5 lbs for ease of operation and portability. Use in confined conditions with one hand operation. Forged upper and lower hooks with latches standard. Impact resistant all-steel frame, gear case and cover. Hardened link type steel load chain for strength and long wear. Free chaining feature serves to quickly attach the load. Conforms with ASME B30.21.

EDP#	Item Code	Description	Cap. Lbs.	Standard Lift	Wt.	Price
1891-00100	COLMCK 0210	HOIST,SERIES 602 MINI LEVER	550	5 ft.	5.0 lbs.	\$168.40
1891-90061	COLMCK 0215	HOIST,SERIES 603 MINI LEVER	1100	5 ft.	6.0 lbs.	\$223.70
1891-90071	COLMCK 0216	HOIST,SERIES 603 MINI LEVER	1100	10 ft.	9.0 lbs.	\$279.00

#### Lever Operated Hoist Series 653



The Series 653 lever operated hoist is a high quality, rugged, steel tool for close quarter pulling, stretching, and hoisting applications. Its characteristic short handle, along with minimal lever pull effort, make this tool ideal for a broad range of applications. Capacities from 3/4 to 6 tons. Impact resistant, stamped steel frame, gear case and cover for durability and light weight. Powder coated finish for added corrosion protection. Hardened steel load sharing gears. Double pawl arrangement for assured load control. Two chain guide rollers for positive chain engagement. Weston type braking system for positive load control and position. Simple one-handed, free chaining for fast load attachment. Hardened steel chain for strength and long wear life. Forged upper and lower hooks with heavy cast steel latched. Minimal maintenance with no special tools required. 5-year warranty against defects in materials and workmanship. Metric rated. Meets ASME B30.21 - Manually Lever Operated Hoist Standard and European CE Standard. Designed and manufactured by Columbus McKinnon Corporation.

EDP#	Item Code	Description	Lever pull to lift rated load (lbs)	Wt.	Price
1891-88461	COLMCK 5310	3/4TON 5'LIFT 653 LEVER	33	18.00	\$392.14
1891-88471	COLMCK 5311	3/4TON 10'LIFT 653 LEVER	33	19.00	\$445.50
1891-88481	COLMCK 5312	3/4TON 15'LIFT 653 LEVER	33	22.00	\$498.85
1891-88491	COLMCK 5313	3/4TON 20'LIFT 653 LEVER	33	25.00	\$552.21
1891-88501	COLMCK 5315	1-1/2TON 5'LIFT 653 LEVER	51	28.00	\$492.43
1891-88511	COLMCK 5316	1-1/2TON 10'LFT 653 LEVER	51	31.00	\$579.86
1891-88521	COLMCK 5317	1-1/2TON 15'LFT 653 LEVER	51	39.00	\$667.29
1891-88531	COLMCK 5318	1-1/2TON 20'LFT 653 LEVER	51	45.00	\$754.71
1891-88541	COLMCK 5320	3 TON 5'LIFT 653 LEVER TOOL	77	48.00	\$795.86
1891-88551	COLMCK 5321	3 TON 10'LIFT 653 LEVER	77	54.00	\$883.29

**Contact our Ag Sales Department  
for additional information on these  
Hoist and other models that will fit your needs.**



## Hoists

### Lever Hoists

#### Puller Hoist



The CM Puller is designed for heavy-duty construction and industrial applications. Used to pull, lift, drag or stretch, its features: Tough aluminum alloy construction and powder coat finish. Weatherproof for outdoor service. Simple construction with fewer parts for ease of maintenance and lower inventories. Hoist alloy hardened steel link type load chain for strength, long wear life and flexibility. Weatherized Weston-type automatic breaking system for positive load control. Easy, one-hand operation and control - only 58 pounds of pull required for 3/4 ton model capacity. Forged upper and lower hooks with latches standard. Upper and lower Latchlok hooks available for all capacities. Optional Load Limiter protection device stop transmission of lever forces protecting against dangerous overload. Optional anchor sling simplifies attachment to allow anchor hook to swivel in tight space applications (3/4 & 1-1/2 ton units available. Optional Zinc-plated chain available. Unlimited lift. Lifetime warranty. Metric rated. Made in U.S.A.

EDP#	Item Code	Description	Pull to lift full loads (lbs)	Lever length (in.)	Wt.	Price
1891-88411	COLMCK 4043	3/4TON 5'LIFT PULLER LEVER	58	21-1/4	16.00	\$378.90
1891-88421	COLMCK 4045	1-1/2TON 5'LIFT PULLER LEVR	89	21-1/4	26.00	\$526.50
1891-88431	COLMCK 4047	3 TON 5'LIFT PULLER LEVER	95	21-1/4	38.00	\$683.10

### Chain Hoists

#### Hand Chain Hoist Series 622



Simple, efficient, economical design. Equipped with hardened load chain for flexibility and long wear. Compact design. Low headroom and lightweight steel construction for easy installation, even in confined spaces. Weston-type load break requires no lubrication. Hand wheel cover with guide slots minimizes jamming and slipping. Forged swivel hooks with latches reduce twisting of chain and unintentional unhooking of load when chain is slack. Standard hand chain drop is 2 feet less than lift (example: 8 foot lift hoist has 6 foot hand chain drop). One-year warranty. Metric rated. Imported.

EDP#	Item Code	Description	Chain pull to lift rated load (lbs)	Hand chain overhauled to lift load one foot (ft)	Wt.	Price
1891-88261	COLMCK 2202	1/2 TON 8'LIFT 622 HAND	53	29	15.00	\$151.20
1891-88271	COLMCK 2216	1/2 TON 12'LIFT 622 HAND	53	29	22.00	\$199.08
1891-88281	COLMCK 2208	1/2 TON 15'LIFT 622 HAND	53	29	25.00	\$234.99
1891-88291	COLMCK 2231	1/2 TON 20'LIFT 622 HAND	53	29	30.00	\$294.84
1891-88301	COLMCK 2204	1 TON 8'LIFT 622 HAND	77	37	22.00	\$179.10
1891-88311	COLMCK 2217	1 TON 12'LIFT 622 HAND	77	37	29.00	\$230.94
1891-88321	COLMCK 2210	1 TON 15'LIFT 622 HAND	77	37	32.00	\$269.82
1891-88331	COLMCK 2262	1 TON 20'LIFT 622 HAND	77	37	38.00	\$334.62
1891-88341	COLMCK 2206	2 TON 8'LIFT 622 HAND	82	80	57.00	\$277.20
1891-88351	COLMCK 2218	2 TON 12'LIFT 622 HAND	82	80	65.00	\$346.86
1891-88361	COLMCK 2213	2 TON 15'LIFT 622 HAND	82	80	71.00	\$399.11
1891-88371	COLMCK 2233	2 TON 20'LIFT 622 HAND	82	80	80.00	\$486.18
1891-88381	COLMCK 2207	3 TON 8'LIFT 622 HAND	65	154	85.00	\$387.00
1891-88391	COLMCK 2230	3 TON 12'LIFT 622 HAND	65	154	93.00	\$502.56
1891-88401	COLMCK 2214	3 TON 20'LIFT 622 HAND	65	154	109.00	\$733.68

**Contact our Ag Sales Department  
for additional information on Chain Hoist,  
Trolley; Jib Crane and other models that will  
fit your needs.**





## Hoists

### Chain Hoists

#### Electric Chain Hoist Valustar



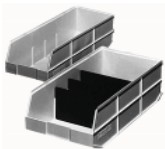
Designed specifically for general commercial application. This compact, lightweight hoist features: Fully machined and heat treated liftwheel with hardened chain guides for smooth chain operation and reduced chain wear. Standard lift 10, 15 & 20 ft. 5ft. power cord length. Heavy-duty caliper type AC brake. Rugged NEMA 4 control station, 115 volt control circuit. Easy to install and maintain. Hoist alloy load chain for smooth operation and maximum chain life. Efficient regenerative braking system to avoid heat generation in power train. Enclosed hoist duty motor. Gear train lifetime lubricated with non-oxidizing grease. Latch type hooks. Hook suspension standard. Fully machined and heat treated gear train. Standard overload Protector device. H3 duty-1 phase; H-4 duty-3 phase. One-year Warranty. Metric rated. Made in U.S.A.

Item Code	Description	Hoist Lift Speed (FPM)	Model	Suspension	Approx. Shipping wt. (lbs)	Price
COLMCK 2401	1/4 TON ELECTRIC CHAIN HOIST	16	WB	115-1-60	54	Call
COLMCK 2401B	1/4 TON ELECTRIC CHAIN HOIST	16	WB	115-1-60	64	Call
COLMCK 2401C	1/4 TON ELECTRIC CHAIN HOIST	16	WB	115-1-60	68	Call
COLMCK 2402	1/4 TON ELECTRIC CHAIN HOIST	16	WB	230/460-3-60	58	Call
COLMCK 2402B	1/4 TON ELECTRIC CHAIN HOIST	16	WB	230/460-3-60	62	Call
COLMCK 2402C	1/4 TON ELECTRIC CHAIN HOIST	16	WB	230/460-3-60	66	Call
COLMCK 2403	1/2 TON ELECTRIC CHAIN HOIST	16	WF	115-1-60	60	Call
COLMCK 2403B	1/2 TON ELECTRIC CHAIN HOIST	16	WF	115-1-60	64	Call
COLMCK 2403C	1/2 TON ELECTRIC CHAIN HOIST	16	WF	115-1-60	68	Call
COLMCK 2404	1/2 TON ELECTRIC CHAIN HOIST	16	WF	230/460-3-60	58	Call
COLMCK 2404B	1/2 TON ELECTRIC CHAIN HOIST	16	WF	230/460-3-60	62	Call
COLMCK 2404C	1/2 TON ELECTRIC CHAIN HOIST	16	WF	230/460-3-60	66	Call
COLMCK 2405	1 TON ELECTRIC CHAIN HOIST	8	WH	115-1-60	70	Call
COLMCK 2405B	1 TON ELECTRIC CHAIN HOIST	8	WH	115-1-60	77	Call
COLMCK 2405C	1 TON ELECTRIC CHAIN HOIST	8	WH	115-1-60	84	Call
COLMCK 2406	1 TON ELECTRIC CHAIN HOIST	8	WH	230/460-3-60	68	Call
COLMCK 2406B	1 TON ELECTRIC CHAIN HOIST	8	WH	230/460-3-60	75	Call
COLMCK 2406C	1 TON ELECTRIC CHAIN HOIST	8	WH	230/460-3-60	82	Call
COLMCK 2407	1 TON ELECTRIC CHAIN HOIST	16	WL	115-1-60	150	Call
COLMCK 2407B	1 TON ELECTRIC CHAIN HOIST	16	WL	115-1-60	11	Call
COLMCK 2407C	1 TON ELECTRIC CHAIN HOIST	16	WL	115-1-60	116	Call
COLMCK 2408	1 TON ELECTRIC CHAIN HOIST	16	WL	230/460-3-60	106	Call
COLMCK 2408B	1 TON ELECTRIC CHAIN HOIST	16	WL	230/460-3-60	112	Call
COLMCK 2408C	1 TON ELECTRIC CHAIN HOIST	16	WL	230/460-3-60	117	Call
COLMCK 2409	2 TON ELECTRIC CHAIN HOIST	8	WR	115-1-60	130	Call
COLMCK 2409B	2 TON ELECTRIC CHAIN HOIST	8	WR	115-1-60	136	Call
COLMCK 2409C	2 TON ELECTRIC CHAIN HOIST	8	WR	115-1-60	150	Call
COLMCK 2410	2 TON ELECTRIC CHAIN HOIST	8	WR	230/460-3-60	122	Call
COLMCK 2410B	2 TON ELECTRIC CHAIN HOIST	8	WR	230/460-3-60	128	Call
COLMCK 2410C	2 TON ELECTRIC CHAIN HOIST	8	WR	230/460-3-60	142	Call

## Shelving & Racking

### Totes & Bins

#### Shelf Bins



Shelf Bins outlast corrugated bins - paying for themselves in reduced replacement costs. The superior construction of Shelf Bins allows them to be fully loaded without bulging or cracking. Durable polypropylene bins also provide an attractive, neat appearance. Works with 12 Inch, 18 Inch and 24 Inch deep shelving, or vertical storage and retrieval units. One-piece construction is waterproof and unaffected by grease or oil. Built-in rear hanglock allows bin to tilt out for complete access. Molded-in label holder identifies contents. Wide hopper front allows easy access. Optional dividers increase versatility. Cups available-small & large, call for pricing.

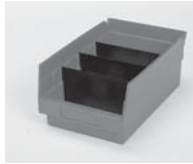
Item Code	Description	OD (Lgth. x Wdth. x Ht.) In.	ID (Lgth. x Wdth. x Ht.) In.	Cups		Price
				per Bin Small	per Bin Large	
AKRO 30110	2" X 1"	11 5/8 x 2 3/4 x 4	10 1/4 x 1 5/8 x 4	3	-	Call
AKRO 30120	4" X 3"	11 5/8 x 4 1/8 x 4	10 1/4 x 3 x 4	5	2	Call
AKRO 30124	4" X 3"	23 5/8 x 4 1/8 x 4	22 1/8 x 3 x 4	11	4	Call
AKRO 30128	4" X 3"	17 7/8 x 4 1/8 x 4	16 1/2 x 3 x 4	8	3	Call
AKRO 30130	6" X 5"	11 5/8 x 6 5/8 x 4	10 1/4 x 5 1/2 x 4	9	4	Call
AKRO 30138	6" X 5"	17 7/8 x 6 5/8 x 4	16 1/2 x 5 1/2 x 4	15	6	Call
AKRO 30150	8" X 7"	11 5/8 x 8 3/8 x 4	10 1/4 x 7 1/8 x 4	11	4	Call
AKRO 30158	8" X 7"	17 7/8 x 8 3/8 x 4	16 1/2 x 7 1/8 x 4	18	6	Call
AKRO 30164	6" X 5"	23 5/8 x 6 5/8 x 4	22 1/8 x 5 1/2 x 4	21	8	Call
AKRO 30170	11" X 10"	11 5/8 x 11 1/8 x 4	10 1/4 x 10 x 4	15	6	Call
AKRO 30174	11" X 10"	23 5/8 x 11 1/8 x 4	22 1/8 x 10 x 4	35	16	Call
AKRO 30178	11" X 10"	17 7/8 x 11 1/8 x 4	16 1/2 x 10 x 4	25	12	Call
AKRO 30184	8" X 7"	23 5/8 x 8 3/8 x 4	22 1/8 x 7 1/8 x 4	25	8	Call



## Shelving & Racking

### Totes & Bins

#### Shelf Bin Dividers



Black polypropylene dividers allow you to create compartments. Fit all bins except 30110. Each bin accepts up to 7 compartment dividers.

Item Code	Description	Fits Shelf Bins	Price
AKRO 40120	4 1/8 DIVIDER	30120, 30124, 30128	Call
AKRO 40130	6 5/8 DIVIDER	30130, 30138, 30164	Call
AKRO 40150	8 3/8 DIVIDER	30150, 30158, 30184	Call
AKRO 40170	11 1/8 DIVIDER	30170, 30174, 30178	Call

### Hand Trucks

#### Dollies

#### Overpack Drum Dollies



The Meco Omaha Overpack Drum Dolly safely contains a wide variety of steel and poly drums within a 2 1/2 Inch deep ring. Drum is only 4 Inches off ground for maximum stability. Four 3 Inch swivel casters ensure complete maneuverability - choice of polyolefin or steel wheels. 27 Inch inside diameter. Height 5 1/2".

Item Code	Description	Wt. Lbs.	Ht. In.	Price
MECO 437P	900 LB OVERPACK DRUM DOLLY	24	5 1/2	Call
MECO 437S	1200LB OVERPACK DRUM DOLLY	28	5 1/2	Call

#### Double Drum Dollies



The Double Drum Dolly from Meco Omaha enables a worker to move two drums at a time instead of one - productivity is increased. Drums are contained safely and securely within a 2 1/2 Inch deep ring. Four 3 Inch steel cross strips support the load; a 2 1/2 Inch wide lengthwise strip with a steel angle stiffener increases rigidity and reduces flex under load. Drum is only 5 1/4 Inches off ground. Six double ball race 4 inch polyolefin swivel casters provide 1800 pounds capacity and ensure total maneuverability.

Item Code	Description	Dim. In.(Lgth. x Wdth. x Ht.)	Wt. Lbs.	Price
MECO 866P	30 GAL DOUBLE DRUM DOLLY	40 x 19 1/2 x 6 3/4	Wt. Lbs.	Call
MECO 872P	55 GAL DOUBLE DRUM DOLLY	48 x 23 1/2 x 6 3/4	Wt. Lbs.	Call

### Drum Handlers

#### Wizard Drum Handlers



Telescoping oak handles provide necessary leverage for easy loading when extended. Handles retract into channel frame for storage. Double welded construction. Unique button rollers attached to barrel cradles allow drum to be rotated for draining or mixing while in a horizontal position. The Wizard handles 15, 30 and 55 gallon drums weighing up to 1000 Pounds. Drums must be a minimum of 29 Inches high for the chime hook to engage the drum. The Wizard is available set up or knocked down. Handle length extended-64", retracted-43 1/2".

EDP#	Item Code	Description	Frame Ht. In.	Drain Ht. In.	Wheels	Wt. Lbs.	Price
	MECO W12RP	WIZARD DRUM STAND	22 1/2	20 1/2	5 In. Polyolefin	48	Call
	MECO W12SS	WIZARD DRUM STAND	22	20	4 In. Steel	51	Call
4148-00800	MECO W12R	WIZARD DRUM STAND	22 1/2	20 1/2	5 In. Hard Rubber	53	\$184.74

#### Round Drum Dollies



Meco Omaha Drum Dollies save time, money and effort by making your drums mobile. Four heavy duty swivel casters allow drums to turn 360 degrees for maximum maneuverability - casters are welded to frame for greater strength. Designed for optimum stability with casters inside frame to prevent breaking. Can be used to transport full drums or make empty drums mobile. Ideal to convert empty drums into mobile refuse containers. 5 1/2" Approx. Ht.

EDP#	Item Code	Description	Cap. Lbs.	Swivel Casters	Wt. Lbs.	Price
	MECO 433R	30-GAL DRUM DOLLY	900	3 In. Polyolefin	19	Call
	MECO 433S	30-GAL DRUM DOLLY	1200	3 In. Steel	22	Call
	MECO 434R	30-GAL DRUM DOLLY	700	2 1/2 In. Polyolefin	19	Call
	MECO 434S	30-GAL DRUM DOLLY	900	2 1/2 In. Steel	21	Call
	MECO 435R	55-GAL DRUM DOLLY	700	2 1/2 In. Polyolefin	22	Call
	MECO 436R	55-GAL DRUM DOLLY	900	3 In. Polyolefin	22	Call
	MECO 436S	55-GAL DRUM DOLLY	1200	3 In. Steel	25	Call
4148-00300	MECO 435S	55-GAL DRUM DOLLY	900	2 1/2 In. Steel	24	\$70.69



## Hand Trucks

### Drum Handlers

#### Rock-It Drum Stand



The most economical drum stand for draining and storing 30 gallon and 55 gallon drums. One worker can load the double welded Rock-It with safety and ease. The exclusive Meco Omaha skid-resistor frame eliminates the possibility of the unit sliding away while loading, making this one of the safest units of its kind. The chime hook formed into the nose plate hooks over the barrel chime eliminating the danger of the barrel sliding off during loading. The DS1, not equipped with wheels, is ideal for inexpensive permanent storage. DS2, DSR and DSP models have two rear swivel casters and two front load wheels. Options include a handle to increase leverage while tipping the load and a slide-out drip pan to protect your floor from spills and drips. The 12 Inch x 12 Inch steel pan accepts most absorbent pads. Drums must be a minimum of 29 Inches high for the handle hook to engage the drum chime. The Rock-It handles drums weighing up to 1000 Pounds.

EDP#	Item Code	Description	Ht. In.	Wt. Lbs.	Price
	MECO DS1	30" BARREL CRADLE&DRAIN STAND	20 1/4	28	Call
	MECO DS1-H	36 1/2" BARREL CRADLE&DRAIN STAND	20 1/4	33	Call
	MECO DS2	30" BARREL CRADLE&DRAIN STAND	22	35	Call
	MECO DS2-H	37 1/2" BARREL CRADLE&DRAIN STAND	22	40	Call
	MECO DSP-H	39 1/2" BARREL CRADLE&DRAIN STAND	22 1/2	39	Call
	MECO DSR-H	38 1/2" BARREL CRADLE&DRAIN STAND	22 1/2	41	Call
4148-00400	MECO DS-R	30" BARREL CRADLE&DRAIN STAND	22 1/2	36	\$125.02

Call us for your  
Material Handling Needs  
800-767-2273

## Hand Trucks

### Hand Trucks 200 Series



The 200 Series Hand Trucks from Meco Omaha provide the most popular hand truck styles and options. Choose a one or two pin, flow back, loop or standard two handle model and a height that machines the truck to the job. Many of Meco's standard features are high priced options with other manufactures. 200 Series Hand Trucks employ a durable 1 Inch diameter double welded steel frame to withstand a variety of operating conditions and ensure years of service. A full height vertical brace adds strength and rigidity, three cross straps contain virtually any load. The large 7 gauge x 8 Inch x 14 Inch steel toe plate is beveled for easy loading; rounded corners prevent serious damage to product, equipment and personnel. Steel wheel guards protect the load and permit free wheel rotation. Standard Hand Trucks are available 46 Inch high for normal operation or 50 Inch high for high-stacking capabilities. 10 X 2-3/4 Semi-Pneumatic wheels. Also available 10 Inch full-pneumatic ball bearing wheels; orange enamel finish. 20" overall width.

EDP#	Item Code	Description	Ht. In.	Wt. Lbs.	Price
	MECO 210SP	HANDTRUCK TWO HDL-500 CP	46	34	Call
	MECO 250SP	HANDTRUCK TWO HDL-500 CP	50	33	Call
	MECO 251SP	HANDTRUCK TWO HDL-500 CP	50	33	Call
	MECO 252SP	HANDTRUCK TWO HDL-500 CP	50	35	Call
4148-00100	MECO 260SP	HANDTRUCK TWO HDL-500 CP	46	32	\$106.21

## Pallet Trucks



### JET J Series 5,000 Lb. Pallet Truck

- Easy to use with single hand operation
- Fingertip controls and 180 turning radius
- 27" x 48" Fork size, maximum lift height 6-1/4"

Features high quality welded steel construction with a durable powder coat finish. Rubber over steel wheels for long life. 2-1/2" low profile design for smaller size pallet openings. 5,000 lb capacity. 204 lb. shipping weight.

Item Code	Description	Fork Lgt In.	Overall Fork Width In.	Weight Lbs	Price
JET 140080	27 x 48 Std. Hand Pallet Truck	48	27	204	\$606.72

Material Handling Equipment



**Lifts**

**Lift Tables and Tilters**

*Pallet Loaders/Unloaders EZ-1 Series*



Bishamon EZ-1 Series Pallet Loaders/Unloaders are the modern way to manually load and unload pallets by bringing the level and location of the top of load closer to the person doing the work. Pallet loading and unloading time can be reduced by 40% thereby substantially increasing productivity.

Applications Features: EZ-Loaders are excellent additions to any loading or unloading process using pallets as the transportation medium. They reduce worker fatigue, improve safety and minimize situations which can lead to back injuries or damage to sensitive products. Typical applications are in manufacturing, processing and distribution.

Standard Features: Firestone Airstroke Actuator™ raises and lowers the table platform to vertically position the pallet to desired height. Firestone tests each Airstroke Actuator™ and warrants them for life against workmanship or material defects. Pressure relief valve prevents excess pressures. No mechanical springs, uses captivated air to pressurize the Airstroke Actuator™ and a bleed valve for capacity adjustments. Self-dampening operation. Heavy-duty, structural steel construction with rugged base frame. Entrapped rollers in base for added stability. Dual attached maintenance blocks. 43 Inch diameter rotator ring on top of unit with secured center pivot. Ball bearing center pivot on rotator ring provides smooth, even rotation. Load weight compensation to keep the top of the load at a convenient working height. 21 1/4" travel, lower height-8 3/4", raised height-30".

Item Code	Description	Collapsed Cap. Range - Min. Lbs.	Collapsed Cap. Range - Max. Lbs.	Price
BISHIN EZ-1-30	EZ-1-30 PALLET LOADER	450	3,000	Call
BISHIN EZ-1-45	EZ-1-45 PALLET LOADER	1,100	4,500	Call

*Scissor Tables ESX Series*

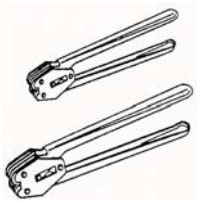
Bishamon ESX Series Scissor Tables are fully adjustable, weight sensitive, self-leveling, mobile positioners. The ESX Models offer a range of 175 to 880 Pounds capacity with a raised height up to 31 1/8 Inches. Easily accessible control knob provides for infinitely adjustable weight setting within the capacity range.

Standard Features: Load weight compensation. Single or dual spring models. Easily accessible gauged weight-selector turn knob. Steel work platforms. Rugged polyurethane wheels with brake. Unique enhanced-leverage handle design. Rugged construction, with heavy-gauge steel and sturdy welds throughout. 1 year replacement on materials and manufacturing process. 16 5/8" travel.



Material Handling Equipment

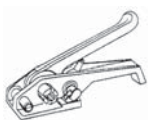
*Sealers for Polyester Straps*



High efficiency flat joint. Seals with toothed inner surface. Strap thickness .015 - .028(0.4 - 0.7).

Item Code	Description	Strap Thck. In. (mm)	Price
ACME ORZ3100-13	14" sealer for 1/2" strap	.015 - .028(0.4 - 0.7)	Call
ACME ORZ3100-16	14" sealer for 5/8" strap	.015 - .028(0.4 - 0.7)	Call
ACME ORZ3200-13	18" sealer for 1/2" strap	.015 - .028(0.4 - 0.7)	Call
ACME ORZ3200-16	18" sealer for 5/8" strap	.015 - .028(0.4 - 0.7)	Call
ACME ORZ3210-16	18" sealer for 5/8" HD strap	.028 - .040(0.7 - 1.0)	Call

*Flat Based Tensioners*



For use with plastic strap. Accommodates 3/8" to 3/4" widths. All tools 2.75lb.

Item Code	Description	Strap Type	Seal Type	Price
ACME ORS1100-19 (PST-20)	FLAT TENSIONER	Poly-propylene, Polyester	Seals	Call
ACME ORS1300-19	FLAT TENSIONER	Cord, Poly-propylene	Seals, Metal Buckles	Call
ACME ORS1400-19	FLAT TENSIONER	Cord, Poly-propylene	Metal Buckles, Seals	Call





## Strapping Equipment

### Sealers and Tensioners

#### Tensioner/Sealer Sealless OR-H-47 Manual



Lightweight, portable tools for various applications. Sealing with little effort . Sealless. For Hi tensile strap up to 1100 lbs, Std. Qty. 850 lbs. Tension Force 1460 lbs.

Item Code	Description	Steel Strap Wdth. In. (mm)	Wt. Lbs.	Price
ORGA OR-H-47	MANUAL TENSIONER/SEALER	3/8, 1/2, 5/8, 3/4 (10, 13, 16, 19)	9.7	Call

### Steel Sealers



EDP#	Item Code	Description	Joint Type	Seal	Size In.	Wt.	Price
2094-53394	ACME DS106	3/4" STEEL SEALER	Dbl. Notch	601, 602	3/4 x .015 - .025	3.00	\$ 274.10
2094-56294	ACME DS105	5/8" STEEL SEALER	Dbl. Notch	501, 502	5/8 x .015 - .023	3.00	\$ 274.10
2094-56694	ACME DS104	1/2" STEEL SEALER	Dbl. Notch	401, 402	1/2 x .015 - .023	3.00	\$ 274.10
2094-59494	ACME DSA218	1-1/4" SEALER	Sgl. Notch	802, 803, 818	1 1/4 x .031	8.00	\$1024.60
2094-59894	ACME DSA250	2" SEALER	Sgl. Notch	902	2 x .044	13.00	\$1627.64

### Steel Strapping Tensioners



EDP#	Item Code	Description	Joint Type	Sealer	Size In.	Wt.	Price
2094-57494	ACME DTF56	3/8" TO 3/4" TENSIONER	Feed Wheel	DS103-106, DSR103-106, DSA116	3/8 x .015 - 3/4 x .025	4.00	\$ 415.89
2094-57894	ACME DTF76	5/8" TO 3/4" TENSIONER	Feed Wheel	DS105-106, DSR105-106, DSA116-DSR118	5/8 x .015 - 3/4 x .035	5.00	\$ 472.60
2094-58694	ACME DTW210	2" TENSIONER	Windlass	DSA250	2 x .050	17.00	\$2020.84
2094-66394	ACME DTP125UL	3/4" TO 1-1/4" TENSIONER	Feed Wheel	DS106, DSR106, 118, 220, DSA116, DSA218, DSR118	3/4 x .020 - 1 1/4 x .035		\$ 850.68

### Heavy-Duty Flat Based Tensioner - ACME



For use with 5/8" to 1 5/4" wide plastic strap, polypropolyne and polyester cord. Weight 5.5lbs.

Item Code	Description	Strap Type	Seal Type	Price
ACME ORS1300-40 (AVT-105)	FLAT TENSIONER	Poly-cord	Metal Buckets	Call

### Cutters and Dispensers



EDP#	Item Code	Description	Size In.	Wt.	Price
2094-51794	ACME C405	STEEL STRAPPING CUTTER	3/8 x .015 to 1 1/4 x .025	2.00	\$ 49.15
2094-52194	ACME C505	STEEL STRAPPING CUTTER	3/4 x .025 to 2 x .050	7.00	\$185.25
2094-52594	ACME MIP-5200	DISPENSER F/ALL OSC STEEL & PLASTIC STRAPPING		70.00	\$410.21

### H.K. Porter® Steel Strap Cutter



Sheer-cut blades. Workhead has black oxide, rust-resistant finish  
 . 1-handed operation gives extra leverage for continuous cuts of wide steel strap, quickly and cleanly. Cushion grip handles  
 . Cuts Steel Strap to 1-1/4"-.050

EDP #	Item Code	Description	Price
1926-62446	COOP 91271	1290G. Steel Strap Cutter Porter. 12"	\$87.30



## Strapping Equipment

### Strapping - ACME

#### Polyester Strapping



One coil per carton. 24 coils per pallet. Coil ID 16" (406mm). Coil face 6" (152mm), strap width 5/8" (16mm).

Item Code	Description	Nom. Breaking Strgth. Lbs. (Newtons)	Coil Lgth. Ft.(m)	Approx. Coil Wt.	Price
ACME 1623BK6	5/8X.025 Black	900 (4003)	4400 (1342)	36	Call
ACME 1629BK6	5/8X.030 Black	1100 (4893)	3600 (1098)	38	Call
ACME 1635GR6	5/8X.035 Green	1400 (6216)	4200 (1280)	52	Call

#### Polypropylene Strapping

EDP#	Item Code	Description	Nom'l Thkns (In.)	Coil Lgth ft.	Approx Coil Wt.	Core Size In.	Coils per ctn.	Price
2094-50194	ACME H12250BK6	1/2"BLK 250# POLYPRO STRAP	.016	9000	19	16x6	1	Call
	ACME H12250BK8	1/2"BLK 250# POLYPRO STRAP	.016	9000	19	8x8	1	Call
	ACME H12400BK6	1/2"BLK 400# POLYPRO STRAP	.022	9000	25	16x6	1	Call
2094-50194	ACME H12500BK6	1/2"BLK 500# POLYPRO STRAP	.026	7200	24	16x6	1	Call
	ACME H581000BK3	5/8"BLK 1000# POLYPRO STRAP	.030	2200	15	16x3	2	Call
	ACME H12300BK6	1/2"BLK 300# POLYPRO STRAP	.018	9000	21	16x6	1	\$28.53
	ACME H12600BK6	1/2"BLK 600# POLYPRO STRAP	.030	7200	28	16x6	1	\$39.46

### Strapping - ACME - 100 Lb. Coils

#### Steel Strapping

EDP#	Item Code	Description	Ft.	Avg. Breaking Strgth. Lbs.	Price Per Lb.
	ACME 1215-OD1006	1/2X.015 REG OSC STRAPPING	39.3	900	Call
	ACME 1220-OD1007	1/2"X.020 REG OSC STRAPPING	29.4	1170	Call
	ACME 1223-OD1009	1/2"X.023 REG OSC STRAPPING	25.6	1380	Call
	ACME 1444-OD1040	1 1/4 x .044 HT/RW	5.3	7,700	Call
	ACME 2141-OD1041	2 x .044 HT/RW	3.3	12,300	Call
	ACME 3420-OD2034	3/4"X.020 RD/OSC STRAPPING	19.6	1760	Call
	ACME 3423-OD1018	3/4X.023 REG OSC STRAPPING	17.1	2070	Call
	ACME 3425-OD1029	3/4 X.025 HT OSC STRAPPING	15.7	2675	Call
	ACME 5820-OD2028	5/8"X.020 RD/OSC STRAPPING	23.6	1460	Call
	2094-00400	ACME 2012002	3/4 X .029 HT/RW STRAPPING	12.7	3,250
2094-43394	ACME 2012004	3/4 X.029 HT OSC STRAPPING	12.7	3,250	\$0.95
2094-54694	ACME 2014001	1-1/4X.029 HT/RW STRAPPING	8.1	5437	\$0.86

### Seals and Accessories

#### Steel Seals



EDP#	Item Code	Description	Seal Dim. In.	Seal Type	Size In.	Price
2094-00800	ACME 54PB	5/8" PUSH TYPE STEEL SEAL	1.12 x .024	Push	5/8	Call
2094-44994	ACME 41	1/2" OPEN STEEL SEAL	1.12 x .020	Open	1/2	\$0.02
2094-46194	ACME 51	5/8" OPEN STEEL SEAL	1.25 x .020	Open	5/8	\$0.02
2094-46594	ACME 61	3/4" PUSH TYPE STEEL SEAL	1.25 x .020	Open	3/4	\$0.02
2094-46994	ACME 62PBH	3/4" PUSH TYPE STEEL SEAL	1.12 x .024	Push	3/4	\$0.04
2094-47795	ACME 481-12	3/4"HD PUSH TYPE STEEL SEAL	2.20 x .035	Push	3/4	\$0.09
2094-48594	ACME 2301007	1-1/4"HD CLOSED STEEL SEAL	2.20 x .035	Closed	1 1/4	\$0.09
2094-48994	ACME 1032PBH	1-1/4"HD PUSH TYPE STL SEAL	2.20 x .035	Push	1 1/4	\$0.11



## Winches

### Ratchet - Type Dutton Lainson

#### Standard Duty Ratchet Winch



Best suited for boat trailer and other horizontal pulling applications which require the freewheeling feature of ratchet type winches. Capacity based on direct line pull on the third layer of line on the drum. Capacity is reduced as the line builds up on the drum. Can be ordered with a large diameter reel hub. Drum capacity based on cable size listed (Cable not included). 2-way ratchet. 2-speed operation. Hand brake standard equipment.

Item Code	Description	Drum Hub Dia. In.	Gear Ratio	Max. Mech. Adv.	Max. Drum Cap. Cable In. x Ft.	Max. Drum Cap. Strap Ft.	Price
DL400	400 lb standard duty winch	5/8	1:1	18	5/32 x 56	15	--
DL600A	600 lb standard duty winch	5/8	3.2:1	57	5/32 x 61	15	\$48.42
DL900A	900 lb standard duty winch	5/8	3.2:1	55	3/16 x 40	15	--
DL1100A	1100 lb standard duty winch	7/8	3.7:1	49	3/16 x 79	30	\$63.23
DL1300A	1300 lb standard duty winch	7/8	4.4:1	56	7/32 x 56	30	\$67.23

### Medium Duty Ratchet Winch



Best suited for boat trailer and other horizontal pulling applications which require the freewheeling feature of ratchet type winches. Capacity based on direct line pull on the third layer of line on the drum. Capacity is reduced as the line builds up on the drum. Can be ordered with a large diameter reel hub. Drum capacity based on cable size listed (Cable not included). Available with hand brake (add suffix B when ordering).

Item Code	Description	Drum Hub Dia. In.	Gear Ratio	Max. Mech. Adv.	Max. Drum Cap. Cable In. x Ft.	Max. Drum Cap. Strap Ft.	Price
DL1402A	1400 lb medium duty winch	7/8	4.4:1	74	1/4 X 40	30	Call
DL1402ASC	1400 lb medium duty winch	7/8	4.4:1	74	1/4 X 40	30	Call
DL1602A	1600 lb medium duty winch	1 1/8	5.4:1	75	1/4 X 58	40	\$95.11
DL1602ADD	1600 lb medium duty winch	1 1/8	5.4:1/1:1	75	1/4 X 58	40	Call
DL1802A	1800 lb medium duty winch	1 1/8	5.4:1	73	9/32 x 58	40	Call

### Heavy Duty Ratchet Winch

Best suited for boat trailer and other horizontal pulling applications which require the freewheeling feature of ratchet type winches. Capacity based on direct line pull on the third layer of line on the drum. Capacity is reduced as the line builds up on the drum. Can be ordered with a large diameter reel hub. Drum capacity based on cable size listed (Cable not included).

Item Code	Description	Drum Hub Dia. In.	Gear Ratio	Max. Mech. Adv.	Max. Drum Cap. Cable In. x Ft.	Max. Drum Cap. Strap Ft.	Price
DL1800A	1800 lb heavy duty winch	1 1/8	10.3:1/5.4:1	139	9/32 x58	40	\$152.81
DL2000A	2000 lb heavy duty winch	1 1/8	12.4:1/5.4:1	168	9/32 x58	40	Call
DL2500A	2500 lb heavy duty winch	1 1/8	17.3:1/5.4:1	229	5/16 x 47	40	\$195.82
DL3200A	3200 lb heavy duty winch	1 1/8	17.3:1/5.4:1	219	3/8 x 30	-	Call
DL3500B	3500 lb heavy duty winch	1 5/16	12:1/6:1	135	3/8 x 37	-	Call

## Electric Motors

### WEG Electric Motors

WEG Farm Duty Single Phase Motors are specifically designed for farm duty applications; these motors require a high starting torque and moderate starting current. Farm Duty Motors are used for augers, pumps, fans, conveyors, poultry equipment, air compressors and other farm equipment.

- TEFC Single Phase, 60Hz, 230V or 115/230V • V-Ring Slinger on drive and opposite drive end • Reversible Shaft Rotation • Start Capacitor for indoor or outdoor use • Manual Overload protection protects against extreme overloads • Alum Die Cast Squirrel Cage Rotor • 1.15 Service Factor, Drain Plugs • 'No Fault Warranty' • Three Phase and Specialty Motors available. • 3600 RPM Motors available. Call for information.



EDP#	Item Code	Description	HP	RPM	Price
6766-00300	WELMO .3318ES1RFDB56	1/3 HP FARM B56 4P 1800	1/3	1800	Call
6766-00400	WELMO .5018ES1RFDB56	1/2 HP FARM B56 4P 1800	1/2	1800	Call
6766-00500	WELMO .7518ES1RFDB56	3/4 HP FARM B56 4P 1800	3/4	1800	Call
6766-00600	WELMO 00118ES1RFDD56	1 HP FARM 56H 4P 14800	1	1800	Call
6766-00700	WELMO 00158ES1RFDF56H	1.5 HP FARM 58H 4P 1800	1.5	1800	Call
6766-00800	WELMO 00218ES1RFDG56H	2 HP FARM 56H 4P 1800	2	1800	Call
6766-00900	WELMO 00318ES1DFD184T	3 HP FARM 184T 4P 1800	3	1800	Call
6766-01000	WELMO 00518ES1DFD184T	5 HP FARM 184T 4P 1800	5	1800	Call
6766-01100	WELMO 00718ES1DFD215Z	7.5 HP FARM 215T 4P 1800	7.5	1800	Call
6766-01200	WELMO 01018ES1DFD215T	10 HP FARM 215T 4P 1800	10	1800	Call